

A : 3房 512'		
樓層	訂價	折實價10%
5	\$10,788,000 @\$21,070	\$9,709,200 @\$18,963
6	\$10,922,000 @\$21,332	\$9,829,800 @\$19,199
7	\$11,032,000 @\$21,547	\$9,928,800 @\$19,392
23	\$12,508,000 @\$24,430	\$11,257,200 @\$21,987
25	\$12,602,000 @\$24,613	\$11,341,800 @\$22,152
26	\$12,676,000 @\$24,758	\$11,408,400 @\$22,282
27	\$12,750,000 @\$24,902	\$11,475,000 @\$22,412
28	\$12,897,000 @\$25,189	\$11,607,300 @\$22,671



J : 3房 464'		
樓層	訂價	折實價10%
5	\$10,014,000 @\$21,582	\$9,012,600 @\$19,424
6	\$10,148,000 @\$21,871	\$9,133,200 @\$19,684
7	\$10,249,000 @\$22,088	\$9,224,100 @\$19,880
23	\$11,590,000 @\$24,978	\$10,431,000 @\$22,481
25	\$11,657,000 @\$25,123	\$10,491,300 @\$22,611
26	\$11,725,000 @\$25,269	\$10,552,500 @\$22,742
27	\$11,792,000 @\$25,414	\$10,612,800 @\$22,872
28	\$11,926,000 @\$25,703	\$10,733,400 @\$23,132

K : 3房 273'/395'		
樓層	訂價	折實價10%
7	\$8,407,000 @\$21,284	\$7,566,300 @\$19,155
8	\$8,575,000 @\$21,709	\$7,717,500 @\$19,538
9	\$8,575,000 @\$21,709	\$7,717,500 @\$19,538
10	\$8,659,000 @\$21,922	\$7,793,100 @\$19,729
11	\$8,826,000 @\$22,344	\$7,943,400 @\$20,110
12	\$8,938,000 @\$22,628	\$8,044,200 @\$20,365
15	\$8,994,000 @\$22,770	\$8,094,600 @\$20,493
22	\$9,385,000 @\$23,759	\$8,446,500 @\$21,384
35	\$6,643,000 @\$24,333	\$5,978,700 @\$21,900

C : 2房 350'		
樓層	訂價	折實價10%
8	\$7,507,000 @\$21,449	\$6,756,300 @\$19,304
9	\$7,507,000 @\$21,449	\$6,756,300 @\$19,304
10	\$7,556,000 @\$21,589	\$6,800,400 @\$19,430
11	\$7,605,000 @\$21,729	\$6,844,500 @\$19,556
12	\$7,679,000 @\$21,940	\$6,911,100 @\$19,746
15	\$7,901,000 @\$22,574	\$7,110,900 @\$20,317
16	\$8,048,000 @\$22,994	\$7,243,200 @\$20,695
17	\$8,097,000 @\$23,134	\$7,287,300 @\$20,821
18	\$8,196,000 @\$23,417	\$7,376,400 @\$21,075
19	\$8,196,000 @\$23,417	\$7,376,400 @\$21,075
20	\$8,245,000 @\$23,557	\$7,420,500 @\$21,201
21	\$8,294,000 @\$23,697	\$7,464,600 @\$21,327
22	\$8,343,000 @\$23,837	\$7,508,700 @\$21,453

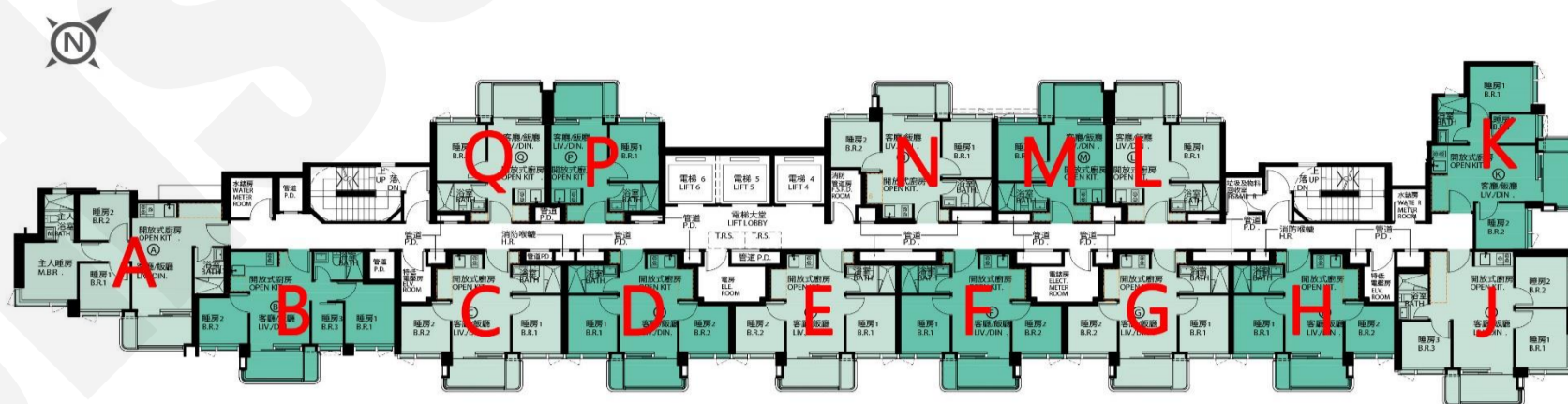
D : 2房 350'		
樓層	訂價	折實價10%
8	\$7,526,000 @\$21,503	\$6,773,400 @\$19,353
9	\$7,526,000 @\$21,503	\$6,773,400 @\$19,353
10	\$7,575,000 @\$21,643	\$6,817,500 @\$19,479
11	\$7,624,000 @\$21,783	\$6,861,600 @\$19,605
12	\$7,698,000 @\$21,994	\$6,928,200 @\$19,795
15	\$7,920,000 @\$22,629	\$7,128,000 @\$20,366
16	\$8,067,000 @\$23,049	\$7,260,300 @\$20,744
17	\$8,116,000 @\$23,189	\$7,304,400 @\$20,870
18	\$8,215,000 @\$23,471	\$7,393,500 @\$21,124
19	\$8,215,000 @\$23,471	\$7,393,500 @\$21,124
20	\$8,264,000 @\$23,611	\$7,437,600 @\$21,250
21	\$8,313,000 @\$23,751	\$7,481,700 @\$21,376
22	\$8,362,000 @\$23,891	\$7,525,800 @\$21,502

E : 2房 348'		
樓層	訂價	折實價10%
8	\$7,498,000 @\$21,546	\$6,748,200 @\$19,391
9	\$7,498,000 @\$21,546	\$6,748,200 @\$19,391
10	\$7,547,000 @\$21,687	\$6,792,300 @\$19,518
11	\$7,596,000 @\$21,828	\$6,836,400 @\$19,645
12	\$7,670,000 @\$22,040	\$6,903,000 @\$19,836
15	\$7,892,000 @\$22,678	\$7,102,800 @\$20,410
16	\$8,039,000 @\$23,101	\$7,235,100 @\$20,791
17	\$8,088,000 @\$23,241	\$7,279,200 @\$20,917
18	\$8,187,000 @\$23,526	\$7,368,300 @\$21,173
19	\$8,187,000 @\$23,526	\$7,368,300 @\$21,173
20	\$8,236,000 @\$23,667	\$7,412,400 @\$21,300
21	\$8,285,000 @\$23,807	\$7,456,500 @\$21,427
22	\$8,334,000 @\$23,948	\$7,500,600 @\$21,553

M : 1房 265'		
樓層	訂價	折實價10%
17	\$5,570,000 @\$21,019	\$5,013,000 @\$18,917
18	\$5,593,000 @\$21,106	\$5,033,700 @\$18,995
19	\$5,593,000 @\$21,106	\$5,033,700 @\$18,995
20	\$5,626,000 @\$21,230	\$5,063,400 @\$19,107
21	\$5,642,000 @\$21,291	\$5,077,800 @\$19,162
22	\$5,658,000 @\$21,351	\$5,092,200 @\$19,216
23	\$5,675,000 @\$21,415	\$5,107,500 @\$19,274
25	\$5,691,000 @\$21,475	\$5,121,900 @\$19,328
26	\$5,708,000 @\$21,540	\$5,137,200 @\$19,386
27	\$5,724,000 @\$21,600	\$5,151,600 @\$19,440
28	\$5,757,000 @\$21,725	\$5,181,300 @\$19,552
29	\$5,757,000 @\$21,725	\$5,181,300 @\$19,552
30	\$5,773,000 @\$21,785	\$5,195,700 @\$19,606
31	\$5,789,000 @\$21,845	\$5,210,100 @\$19,661
32	\$5,806,000 @\$21,909	\$5,225,400 @\$19,718
33	\$6,067,000 @\$22,894	\$5,460,300 @\$20,605

紅色為最高售價、最高平均呎價；藍色為最低售價、最低平均呎價

H: 2房 265'/348'		
樓層	訂價	折實價10%
26	\$8,328,000 @\$23,931	\$7,495,200 @\$21,538
27	\$8,376,000 @\$24,069	\$7,538,400 @\$21,662
28	\$8,472,000 @\$24,345	\$7,624,800 @\$21,910
29	\$8,472,000 @\$24,345	\$7,624,800 @\$21,910
30	\$8,520,000 @\$24,483	\$7,668,000 @\$22,034
31	\$8,568,000 @\$24,621	\$7,711,200 @\$22,159
32	\$8,616,000 @\$24,759	\$7,754,400 @\$22,283
33	\$9,000,000 @\$25,862	\$8,100,000 @\$23,276
35	\$6,401,000 @\$24,155	\$5,760,900 @\$21,739



P: 1房 273'		
樓層	訂價	折實價10%
17	\$5,757,000 @\$21,088	\$5,181,300 @\$18,979
18	\$5,792,000 @\$21,216	\$5,212,800 @\$19,095
19	\$5,792,000 @\$21,216	\$5,212,800 @\$19,095
20	\$5,826,000 @\$21,341	\$5,243,400 @\$19,207
21	\$5,844,000 @\$21,407	\$5,259,600 @\$19,266
22	\$5,861,000 @\$21,469	\$5,274,900 @\$19,322
23	\$5,879,000 @\$21,535	\$5,291,100 @\$19,381
25	\$5,896,000 @\$21,597	\$5,306,400 @\$19,437
26	\$5,914,000 @\$21,663	\$5,322,600 @\$19,497
27	\$5,931,000 @\$21,725	\$5,337,900 @\$19,553
28	\$5,966,000 @\$21,853	\$5,369,400 @\$19,668
29	\$5,966,000 @\$21,853	\$5,369,400 @\$19,668
30	\$5,983,000 @\$21,916	\$5,384,700 @\$19,724
31	\$6,001,000 @\$21,982	\$5,400,900 @\$19,784
32	\$6,018,000 @\$22,044	\$5,416,200 @\$19,840
33	\$6,298,000 @\$23,070	\$5,668,200 @\$20,763

Q: 1房 273'		
樓層	訂價	折實價10%
17	\$5,707,000 @\$20,905	\$5,136,300 @\$18,814
18	\$5,732,000 @\$20,996	\$5,158,800 @\$18,897
19	\$5,732,000 @\$20,996	\$5,158,800 @\$18,897
20	\$5,766,000 @\$21,121	\$5,189,400 @\$19,009
21	\$5,784,000 @\$21,187	\$5,205,600 @\$19,068
22	\$5,801,000 @\$21,249	\$5,220,900 @\$19,124
23	\$5,819,000 @\$21,315	\$5,237,100 @\$19,184
25	\$5,836,000 @\$21,377	\$5,252,400 @\$19,240
26	\$5,854,000 @\$21,443	\$5,268,600 @\$19,299
27	\$5,871,000 @\$21,505	\$5,283,900 @\$19,355
28	\$5,906,000 @\$21,634	\$5,315,400 @\$19,470
29	\$5,906,000 @\$21,634	\$5,315,400 @\$19,470
30	\$5,923,000 @\$21,696	\$5,330,700 @\$19,526
31	\$5,941,000 @\$21,762	\$5,346,900 @\$19,586
32	\$5,958,000 @\$21,824	\$5,362,200 @\$19,642
33	\$6,238,000 @\$22,850	\$5,614,200 @\$20,565

L: 1房 270'/273'		
樓層	訂價	折實價10%
18	\$5,640,000 @\$20,889	\$5,076,000 @\$18,800
19	\$5,646,000 @\$20,911	\$5,081,400 @\$18,820
20	\$5,659,000 @\$20,959	\$5,093,100 @\$18,863
21	\$5,665,000 @\$20,981	\$5,098,500 @\$18,883
22	\$5,681,000 @\$21,041	\$5,112,900 @\$18,937
23	\$5,698,000 @\$21,104	\$5,128,200 @\$18,993
25	\$5,714,000 @\$21,163	\$5,142,600 @\$19,047
26	\$5,730,000 @\$21,222	\$5,157,000 @\$19,100
27	\$5,747,000 @\$21,285	\$5,172,300 @\$19,157
28	\$5,780,000 @\$21,407	\$5,202,000 @\$19,267
29	\$5,780,000 @\$21,407	\$5,202,000 @\$19,267
30	\$5,796,000 @\$21,467	\$5,216,400 @\$19,320
31	\$5,812,000 @\$21,526	\$5,230,800 @\$19,373
32	\$5,829,000 @\$21,589	\$5,246,100 @\$19,430
33	\$6,090,000 @\$22,556	\$5,481,000 @\$20,300
35	\$6,589,000 @\$24,136	\$5,930,100 @\$21,722

G: 2房 270'/348'		
樓層	訂價	折實價10%
27	\$8,357,000 @\$24,014	\$7,521,300 @\$21,613
28	\$8,453,000 @\$24,290	\$7,607,700 @\$21,861
29	\$8,453,000 @\$24,290	\$7,607,700 @\$21,861
30	\$8,501,000 @\$24,428	\$7,650,900 @\$21,985
31	\$8,549,000 @\$24,566	\$7,694,100 @\$22,109
32	\$8,597,000 @\$24,704	\$7,737,300 @\$22,234
33	\$8,981,000 @\$25,807	\$8,082,900 @\$23,227
35	\$6,425,000 @\$23,796	\$5,782,500 @\$21,417

B: 3房 269'		
樓層	訂價	折實價10%
35	\$7,224,000 @\$26,855	\$6,501,600 @\$24,170

紅色為最高售價、最高平均呎價；藍色為最低售價、最低平均呎價