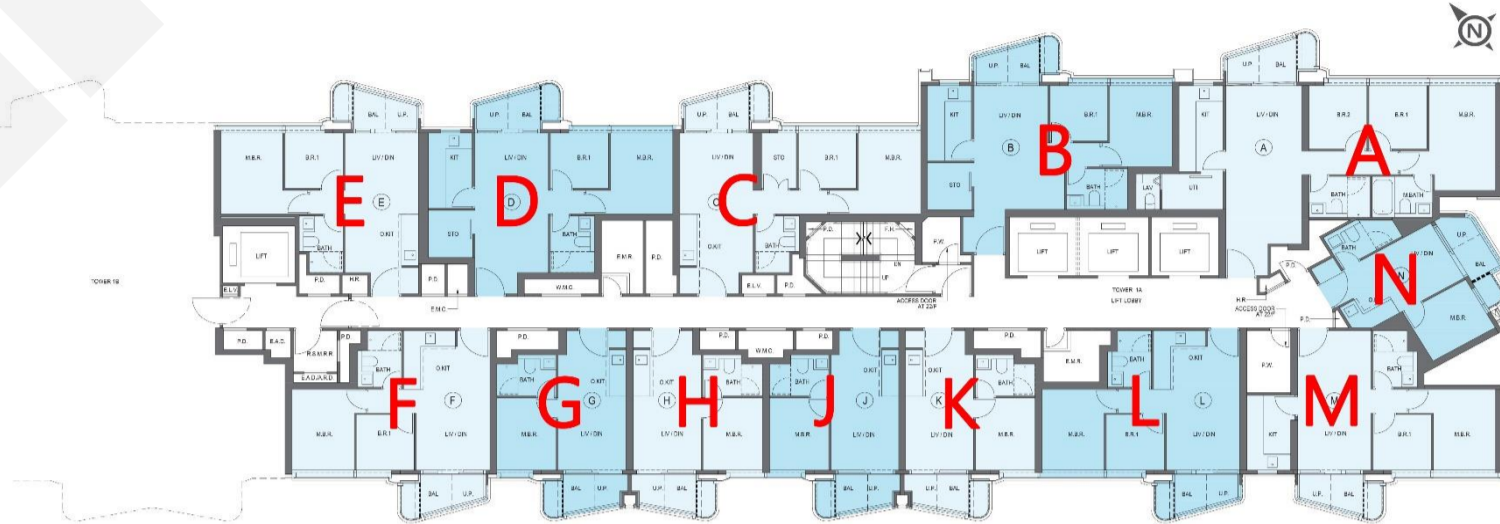
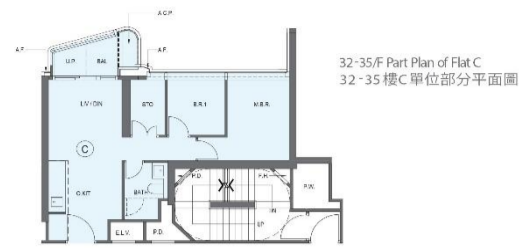


1A座A : 3房 771'		
樓層	訂價	折實價25%
1	\$24,673,000 @\$32,001	\$18,504,750 @\$24,001
2	\$24,917,000 @\$32,318	\$18,687,750 @\$24,238
3	\$25,162,000 @\$32,636	\$18,871,500 @\$24,477
5	\$25,413,000 @\$32,961	\$19,059,750 @\$24,721
6	\$25,669,000 @\$33,293	\$19,251,750 @\$24,970
7	\$25,933,000 @\$33,636	\$19,449,750 @\$25,227
8	\$26,440,000 @\$34,293	\$19,830,000 @\$25,720
9	\$26,704,000 @\$34,636	\$20,028,000 @\$25,977
10	\$26,970,000 @\$34,981	\$20,227,500 @\$26,235
11	\$27,240,000 @\$35,331	\$20,430,000 @\$26,498
12	\$27,522,000 @\$35,696	\$20,641,500 @\$26,772
15	\$27,794,000 @\$36,049	\$20,845,500 @\$27,037
16	\$28,077,000 @\$36,416	\$21,057,750 @\$27,312
17	\$28,353,000 @\$36,774	\$21,264,750 @\$27,581
18	\$28,852,000 @\$37,422	\$21,639,000 @\$28,066
19	\$29,140,000 @\$37,795	\$21,855,000 @\$28,346
20	\$29,433,000 @\$38,175	\$22,074,750 @\$28,631
21	\$29,726,000 @\$38,555	\$22,294,500 @\$28,916
22	\$30,024,000 @\$38,942	\$22,518,000 @\$29,206
23	\$30,324,000 @\$39,331	\$22,743,000 @\$29,498
25	\$30,626,000 @\$39,722	\$22,969,500 @\$29,792
26	\$30,933,000 @\$40,121	\$23,199,750 @\$30,090
27	\$31,242,000 @\$40,521	\$23,431,500 @\$30,391
28	\$31,806,000 @\$41,253	\$23,854,500 @\$30,940
29	\$32,124,000 @\$41,665	\$24,093,000 @\$31,249
30	\$32,445,000 @\$42,082	\$24,333,750 @\$31,561
31	\$32,769,000 @\$42,502	\$24,576,750 @\$31,876
32	\$33,097,000 @\$42,927	\$24,822,750 @\$32,196
33	\$33,428,000 @\$43,357	\$25,071,000 @\$32,518
35	\$39,064,000 @\$50,667	\$29,298,000 @\$38,000

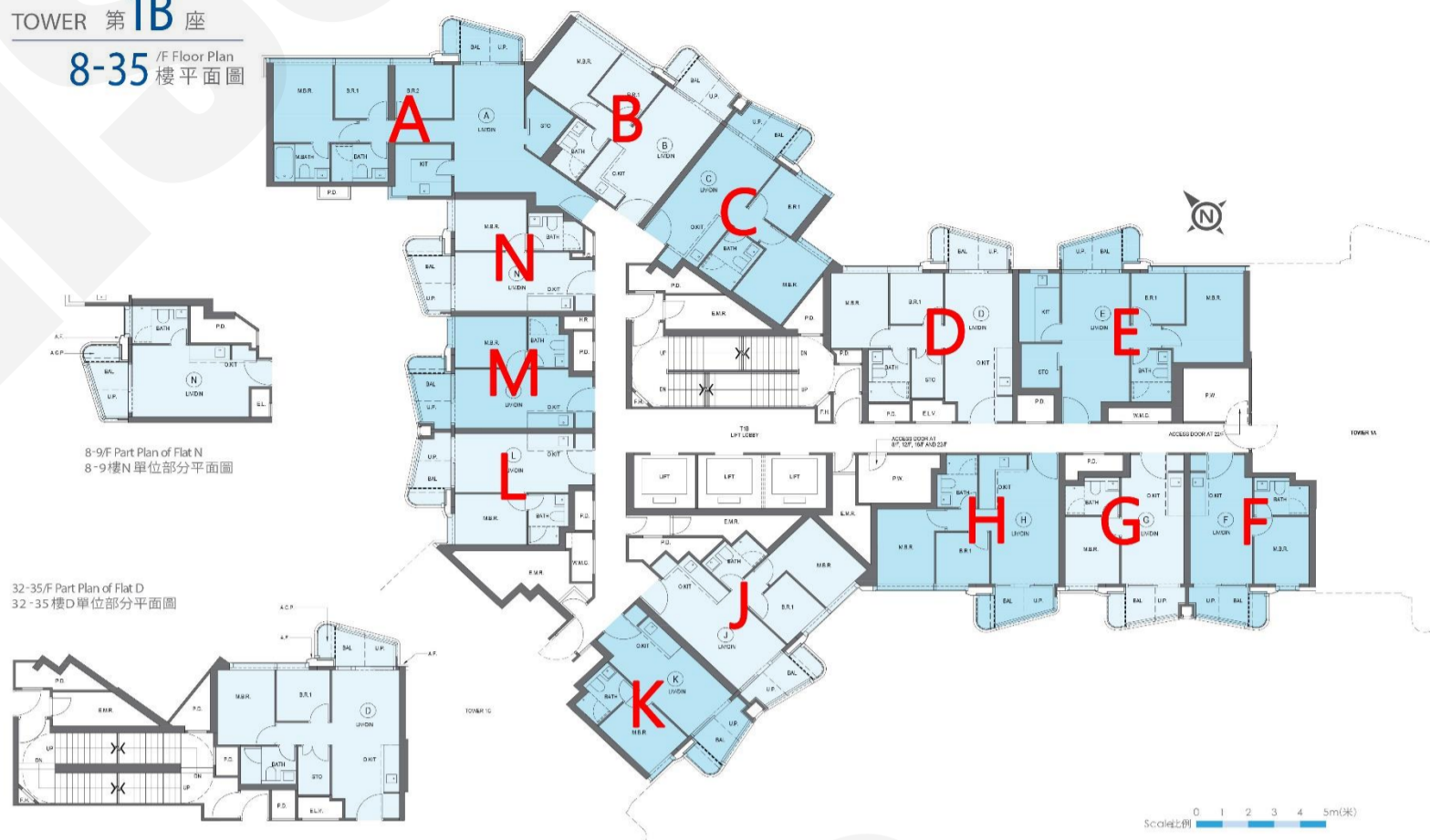
TOWER 第1A座
2-35 /F Floor Plan
樓平面圖



紅色為最高售價、最高平均呎價；藍色為最低售價、最低平均呎價

1B座A : 3房 713'715'719'723'734'		
樓層	訂價	折實價25%
1	\$23,170,000 @\$32,047	\$17,377,500 @\$24,035
2	\$23,026,000 @\$31,848	\$17,269,500 @\$23,886
3	\$23,264,000 @\$32,628	\$17,448,000 @\$24,471
5	\$24,180,000 @\$32,943	\$18,135,000 @\$24,707
6	\$24,424,000 @\$33,275	\$18,318,000 @\$24,956
7	\$24,669,000 @\$33,609	\$18,501,750 @\$25,207
8	\$24,642,000 @\$34,273	\$18,481,500 @\$25,704
9	\$24,888,000 @\$34,615	\$18,666,000 @\$25,961
10	\$25,002,000 @\$34,968	\$18,751,500 @\$26,226
11	\$25,252,000 @\$35,317	\$18,939,000 @\$26,488
12	\$25,501,000 @\$35,666	\$19,125,750 @\$26,749
15	\$25,758,000 @\$36,025	\$19,318,500 @\$27,019
16	\$26,016,000 @\$36,386	\$19,512,000 @\$27,290
17	\$26,278,000 @\$36,752	\$19,708,500 @\$27,564
18	\$26,741,000 @\$37,400	\$20,055,750 @\$28,050
19	\$27,008,000 @\$37,773	\$20,256,000 @\$28,330
20	\$27,280,000 @\$38,154	\$20,460,000 @\$28,615
21	\$27,553,000 @\$38,536	\$20,664,750 @\$28,902
22	\$27,829,000 @\$38,922	\$20,871,750 @\$29,191
23	\$28,109,000 @\$39,313	\$21,081,750 @\$29,485
25	\$28,389,000 @\$39,705	\$21,291,750 @\$29,779
26	\$28,673,000 @\$40,102	\$21,504,750 @\$30,077
27	\$28,960,000 @\$40,503	\$21,720,000 @\$30,378
28	\$29,482,000 @\$41,234	\$22,111,500 @\$30,925
29	\$29,780,000 @\$41,650	\$22,335,000 @\$31,238
30	\$30,073,000 @\$42,060	\$22,554,750 @\$31,545
31	\$30,374,000 @\$42,481	\$22,780,500 @\$31,861
32	\$30,678,000 @\$42,906	\$23,008,500 @\$32,180
33	\$30,985,000 @\$43,336	\$23,238,750 @\$32,502
35	\$36,226,000 @\$50,666	\$27,169,500 @\$37,999

TOWER 第1B座
8-35 /F Floor Plan
樓平面圖



紅色為最高售價、最高平均呎價；藍色為最低售價、最低平均呎價

1C座M: 2房 429/668'		
樓層	訂價	折實價25%
3	\$22,266,000 @\$33,332	\$16,699,500 @\$24,999
6	\$10,970,000 @\$25,571	\$8,227,500 @\$19,178
7	\$11,082,000 @\$25,832	\$8,311,500 @\$19,374
8	\$11,189,000 @\$26,082	\$8,391,750 @\$19,561
9	\$11,246,000 @\$26,214	\$8,434,500 @\$19,661
12	\$11,346,000 @\$26,448	\$8,509,500 @\$19,836
15	\$11,382,000 @\$26,531	\$8,536,500 @\$19,899
16	\$11,416,000 @\$26,611	\$8,562,000 @\$19,958
17	\$11,450,000 @\$26,690	\$8,587,500 @\$20,017
20	\$11,634,000 @\$27,119	\$8,725,500 @\$20,339
21	\$11,669,000 @\$27,200	\$8,751,750 @\$20,400
22	\$11,704,000 @\$27,282	\$8,778,000 @\$20,462
23	\$11,821,000 @\$27,555	\$8,865,750 @\$20,666
25	\$11,941,000 @\$27,834	\$8,955,750 @\$20,876
26	\$12,060,000 @\$28,112	\$9,045,000 @\$21,084
27	\$12,176,000 @\$28,382	\$9,132,000 @\$21,287

1C座G: 1房 306'		
樓層	訂價	折實價25%
6	\$7,466,000 @\$24,399	\$5,599,500 @\$18,299
7	\$7,513,000 @\$24,552	\$5,634,750 @\$18,414
8	\$7,589,000 @\$24,801	\$5,691,750 @\$18,600
9	\$7,624,000 @\$24,915	\$5,718,000 @\$18,686
12	\$7,693,000 @\$25,141	\$5,769,750 @\$18,855
15	\$7,717,000 @\$25,219	\$5,787,750 @\$18,914
16	\$7,740,000 @\$25,294	\$5,805,000 @\$18,971
17	\$7,764,000 @\$25,373	\$5,823,000 @\$19,029
20	\$7,886,000 @\$25,771	\$5,914,500 @\$19,328
21	\$7,910,000 @\$25,850	\$5,932,500 @\$19,387
22	\$7,936,000 @\$25,935	\$5,952,000 @\$19,451
23	\$8,013,000 @\$26,186	\$6,009,750 @\$19,640
25	\$8,093,000 @\$26,448	\$6,069,750 @\$19,836
26	\$8,177,000 @\$26,722	\$6,132,750 @\$20,042
27	\$8,264,000 @\$27,007	\$6,198,000 @\$20,255



1C座D: 2房 432'		
樓層	訂價	折實價25%
5	\$10,944,000 @\$25,333	\$8,208,000 @\$19,000
6	\$11,234,000 @\$26,005	\$8,425,500 @\$19,503
7	\$11,844,000 @\$27,417	\$8,883,000 @\$20,563
8	\$12,080,000 @\$27,963	\$9,060,000 @\$20,972
9	\$12,264,000 @\$28,389	\$9,198,000 @\$21,292
12	\$12,757,000 @\$29,530	\$9,567,750 @\$22,148
15	\$12,824,000 @\$29,685	\$9,618,000 @\$22,264
16	\$12,890,000 @\$29,838	\$9,667,500 @\$22,378
17	\$12,954,000 @\$29,986	\$9,715,500 @\$22,490
20	\$13,213,000 @\$30,586	\$9,909,750 @\$22,939
21	\$13,280,000 @\$30,741	\$9,960,000 @\$23,056
22	\$13,344,000 @\$30,889	\$10,008,000 @\$23,167
26	\$13,750,000 @\$31,829	\$10,312,500 @\$23,872
27	\$13,890,000 @\$32,153	\$10,417,500 @\$24,115

1C座N: 1房 278'		
樓層	訂價	折實價25%
12	\$7,514,000 @\$27,029	\$5,635,500 @\$20,272
16	\$7,593,000 @\$27,313	\$5,694,750 @\$20,485
20	\$7,784,000 @\$28,000	\$5,838,000 @\$21,000
21	\$7,821,000 @\$28,133	\$5,865,750 @\$21,100
22	\$7,864,000 @\$28,288	\$5,898,000 @\$21,216
23	\$7,940,000 @\$28,561	\$5,955,000 @\$21,421
26	\$8,104,000 @\$29,151	\$6,078,000 @\$21,863
27	\$8,180,000 @\$29,424	\$6,135,000 @\$22,068

1C座E: 2房 443/499'		
樓層	訂價	折實價25%
5	\$10,650,000 @\$24,041	\$7,987,500 @\$18,030
6	\$10,757,000 @\$24,282	\$8,067,750 @\$18,212
12	\$14,490,000 @\$29,038	\$10,867,500 @\$21,779
16	\$14,637,000 @\$29,333	\$10,977,750 @\$21,999
20	\$15,008,000 @\$30,076	\$11,256,000 @\$22,557
22	\$15,160,000 @\$30,381	\$11,370,000 @\$22,786
26	\$15,620,000 @\$31,303	\$11,715,000 @\$23,477

1C座C: 2房 548'		
樓層	訂價	折實價25%
9	\$15,660,000 @\$28,577	\$11,745,000 @\$21,432
12	\$16,294,000 @\$29,734	\$12,220,500 @\$22,300
15	\$16,376,000 @\$29,883	\$12,282,000 @\$22,412
16	\$16,466,000 @\$30,047	\$12,349,500 @\$22,536
17	\$16,528,000 @\$30,161	\$12,396,000 @\$22,620
20	\$16,877,000 @\$30,797	\$12,657,750 @\$23,098
21	\$16,962,000 @\$30,953	\$12,721,500 @\$23,214
22	\$17,046,000 @\$31,106	\$12,784,500 @\$23,329
26	\$17,564,000 @\$32,051	\$13,173,000 @\$24,038
27	\$17,740,000 @\$32,372	\$13,305,000 @\$24,279

1C座F: 1房 307'		
樓層	訂價	折實價25%
6	\$7,474,000 @\$24,345	\$5,605,500 @\$18,259
7	\$7,513,000 @\$24,472	\$5,634,750 @\$18,354
8	\$7,589,000 @\$24,720	\$5,691,750 @\$18,540
9	\$7,624,000 @\$24,834	\$5,718,000 @\$18,625
12	\$7,693,000 @\$25,059	\$5,769,750 @\$18,794
15	\$7,717,000 @\$25,137	\$5,787,750 @\$18,853
16	\$7,740,000 @\$25,212	\$5,805,000 @\$18,909
17	\$7,764,000 @\$25,290	\$5,823,000 @\$18,967
20	\$7,886,000 @\$25,687	\$5,914,500 @\$19,265
21	\$7,910,000 @\$25,765	\$5,932,500 @\$19,324
22	\$7,936,000 @\$25,850	\$5,952,000 @\$19,388
23	\$8,013,000 @\$26,101	\$6,009,750 @\$19,576
25	\$8,093,000 @\$26,362	\$6,069,750 @\$19,771
26	\$8,177,000 @\$26,635	\$6,132,750 @\$19,976
27	\$8,264,000 @\$26,919	\$6,198,000 @\$20,189

紅色為最高售價、最高平均呎價；藍色為最低售價、最低平均呎價

1C座H: 1房 306'		
樓層	訂價	折實價25%
6	\$7,501,000 @\$24,513	\$5,625,750 @\$18,385
7	\$7,540,000 @\$24,641	\$5,655,000 @\$18,480
8	\$7,613,000 @\$24,879	\$5,709,750 @\$18,659
9	\$7,650,000 @\$25,000	\$5,737,500 @\$18,750
12	\$7,722,000 @\$25,235	\$5,791,500 @\$18,926
15	\$7,744,000 @\$25,307	\$5,808,000 @\$18,980
16	\$7,766,000 @\$25,379	\$5,824,500 @\$19,034
17	\$7,793,000 @\$25,467	\$5,844,750 @\$19,100
20	\$7,917,000 @\$25,873	\$5,937,750 @\$19,404
21	\$7,940,000 @\$25,948	\$5,955,000 @\$19,461
22	\$7,962,000 @\$26,020	\$5,971,500 @\$19,515
23	\$8,042,000 @\$26,281	\$6,031,500 @\$19,711
25	\$8,122,000 @\$26,542	\$6,091,500 @\$19,907
26	\$8,204,000 @\$26,810	\$6,153,000 @\$20,108
27	\$8,286,000 @\$27,078	\$6,214,500 @\$20,309

TOWER 第1C座
7-35/F Floor Plan
樓平面圖



1C座J: 1房 308'		
樓層	訂價	折實價25%
6	\$7,549,000 @\$24,510	\$5,661,750 @\$18,382
7	\$7,589,000 @\$24,640	\$5,691,750 @\$18,480
8	\$7,664,000 @\$24,883	\$5,748,000 @\$18,662
9	\$7,701,000 @\$25,003	\$5,775,750 @\$18,752
12	\$7,770,000 @\$25,227	\$5,827,500 @\$18,920
15	\$7,794,000 @\$25,305	\$5,845,500 @\$18,979
16	\$7,824,000 @\$25,403	\$5,868,000 @\$19,052
17	\$7,842,000 @\$25,461	\$5,881,500 @\$19,096
20	\$7,966,000 @\$25,864	\$5,974,500 @\$19,398
21	\$7,993,000 @\$25,951	\$5,994,750 @\$19,463
22	\$8,010,000 @\$26,006	\$6,007,500 @\$19,505
23	\$8,101,000 @\$26,302	\$6,075,750 @\$19,726
25	\$8,176,000 @\$26,545	\$6,132,000 @\$19,909
26	\$8,261,000 @\$26,821	\$6,195,750 @\$20,116
27	\$8,340,000 @\$27,078	\$6,255,000 @\$20,308

1C座K: 2房 426'		
樓層	訂價	折實價25%
6	\$10,333,000 @\$24,256	\$7,749,750 @\$18,192
7	\$10,384,000 @\$24,376	\$7,788,000 @\$18,282
8	\$10,482,000 @\$24,606	\$7,861,500 @\$18,454
9	\$10,536,000 @\$24,732	\$7,902,000 @\$18,549
12	\$10,633,000 @\$24,960	\$7,974,750 @\$18,720
15	\$10,664,000 @\$25,033	\$7,998,000 @\$18,775
16	\$10,693,000 @\$25,101	\$8,019,750 @\$18,826
17	\$10,726,000 @\$25,178	\$8,044,500 @\$18,884
20	\$10,900,000 @\$25,587	\$8,175,000 @\$19,190
21	\$10,933,000 @\$25,664	\$8,199,750 @\$19,248
22	\$10,966,000 @\$25,742	\$8,224,500 @\$19,306
23	\$11,073,000 @\$25,993	\$8,304,750 @\$19,495
25	\$11,184,000 @\$26,254	\$8,388,000 @\$19,690
26	\$11,296,000 @\$26,516	\$8,472,000 @\$19,887
27	\$11,416,000 @\$26,798	\$8,562,000 @\$20,099

1C座L: 1房 305'		
樓層	訂價	折實價25%
6	\$7,722,000 @\$25,318	\$5,791,500 @\$18,989
7	\$7,762,000 @\$25,449	\$5,821,500 @\$19,087
8	\$7,837,000 @\$25,695	\$5,877,750 @\$19,271
9	\$7,877,000 @\$25,826	\$5,907,750 @\$19,370
12	\$7,949,000 @\$26,062	\$5,961,750 @\$19,547
15	\$7,973,000 @\$26,141	\$5,979,750 @\$19,606
16	\$7,997,000 @\$26,220	\$5,997,750 @\$19,665
17	\$8,021,000 @\$26,298	\$6,015,750 @\$19,724
20	\$8,149,000 @\$26,718	\$6,111,750 @\$20,039
21	\$8,176,000 @\$26,807	\$6,132,000 @\$20,105
22	\$8,202,000 @\$26,892	\$6,151,500 @\$20,169
23	\$8,282,000 @\$27,154	\$6,211,500 @\$20,366
25	\$8,368,000 @\$27,436	\$6,276,000 @\$20,577
26	\$8,446,000 @\$27,692	\$6,334,500 @\$20,769
27	\$8,530,000 @\$27,967	\$6,397,500 @\$20,975

1C座A: 3房 613'		
樓層	訂價	折實價25%
9	\$17,806,000 @\$29,047	\$13,354,500 @\$21,785
12	\$18,256,000 @\$29,781	\$13,692,000 @\$22,336
15	\$18,346,000 @\$29,928	\$13,759,500 @\$22,446
16	\$18,437,000 @\$30,077	\$13,827,750 @\$22,558
17	\$18,530,000 @\$30,228	\$13,897,500 @\$22,671
20	\$18,906,000 @\$30,842	\$14,179,500 @\$23,131
21	\$19,013,000 @\$31,016	\$14,259,750 @\$23,262
22	\$19,101,000 @\$31,160	\$14,325,750 @\$23,370
26	\$19,680,000 @\$32,104	\$14,760,000 @\$24,078
27	\$19,877,000 @\$32,426	\$14,907,750 @\$24,319

1C座B: 2房 486'		
樓層	訂價	折實價25%
9	\$13,977,000 @\$28,759	\$10,482,750 @\$21,569
12	\$14,328,000 @\$29,481	\$10,746,000 @\$22,111
15	\$14,400,000 @\$29,630	\$10,800,000 @\$22,222
16	\$14,488,000 @\$29,811	\$10,866,000 @\$22,358
17	\$14,546,000 @\$29,930	\$10,909,500 @\$22,448
20	\$14,840,000 @\$30,535	\$11,130,000 @\$22,901
21	\$14,914,000 @\$30,687	\$11,185,500 @\$23,015
22	\$14,989,000 @\$30,842	\$11,241,750 @\$23,131
26	\$15,442,000 @\$31,774	\$11,581,500 @\$23,830
27	\$15,598,000 @\$32,095	\$11,698,500 @\$24,071

紅色為最高售價、最高平均呎價；藍色為最低售價、最低平均呎價