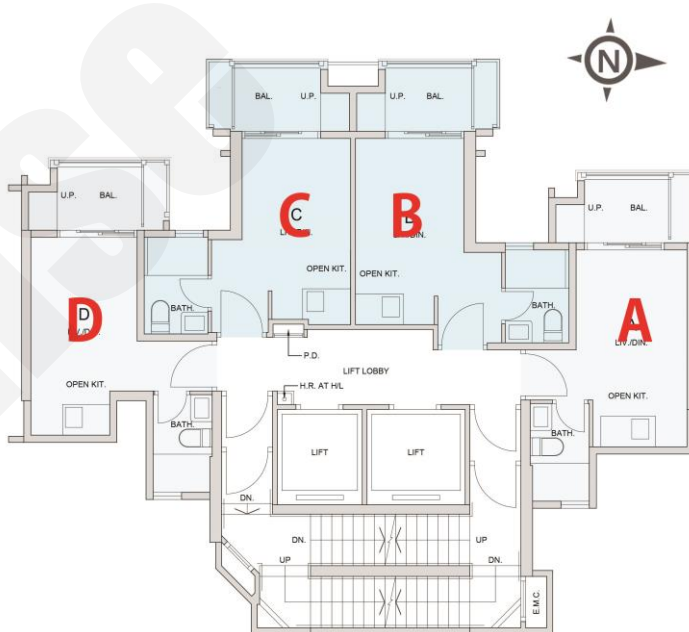


B: 開放式 207'/266'		
樓層	訂價	折實價20%
3	\$5,108,000 @\$24,676	\$4,086,400 @\$19,741
5	\$5,108,000 @\$24,676	\$4,086,400 @\$19,741
6	\$5,108,000 @\$24,676	\$4,086,400 @\$19,741
7	\$5,108,000 @\$24,676	\$4,086,400 @\$19,741
8	\$5,108,000 @\$24,676	\$4,086,400 @\$19,741
11	\$7,376,000 @\$27,729	\$5,900,800 @\$22,183
12	\$7,450,000 @\$28,008	\$5,960,000 @\$22,406
15	\$7,525,000 @\$28,289	\$6,020,000 @\$22,632
16	\$7,600,000 @\$28,571	\$6,080,000 @\$22,857

C: 開放式 201'/265'		
樓層	訂價	折實價20%
3	\$5,108,000 @\$25,413	\$4,086,400 @\$20,330
5	\$5,108,000 @\$25,413	\$4,086,400 @\$20,330
6	\$5,108,000 @\$25,413	\$4,086,400 @\$20,330
7	\$5,108,000 @\$25,413	\$4,086,400 @\$20,330
8	\$5,108,000 @\$25,413	\$4,086,400 @\$20,330
11	\$7,422,000 @\$28,008	\$5,937,600 @\$22,406
12	\$7,496,000 @\$28,287	\$5,996,800 @\$22,629
15	\$7,571,000 @\$28,570	\$6,056,800 @\$22,856
16	\$7,647,000 @\$28,857	\$6,117,600 @\$23,085

A: 開放式 209'/255'		
樓層	訂價	折實價20%
5	\$5,108,000 @\$24,440	\$4,086,400 @\$19,552
6	\$5,108,000 @\$24,440	\$4,086,400 @\$19,552
7	\$5,108,000 @\$24,440	\$4,086,400 @\$19,552
8	\$5,108,000 @\$24,440	\$4,086,400 @\$19,552
11	\$7,009,000 @\$27,486	\$5,607,200 @\$21,989
12	\$7,077,000 @\$27,753	\$5,661,600 @\$22,202
15	\$7,145,000 @\$28,020	\$5,716,000 @\$22,416
16	\$7,213,000 @\$28,286	\$5,770,400 @\$22,629

D: 開放式 213'		
樓層	訂價	折實價20%
5	\$5,108,000 @\$23,981	\$4,086,400 @\$19,185
6	\$5,108,000 @\$23,981	\$4,086,400 @\$19,185
7	\$5,108,000 @\$23,981	\$4,086,400 @\$19,185
8	\$5,108,000 @\$23,981	\$4,086,400 @\$19,185



紅色為最高售價、最高平均呎價；藍色為最低售價、最低平均呎價