

新盤價單表

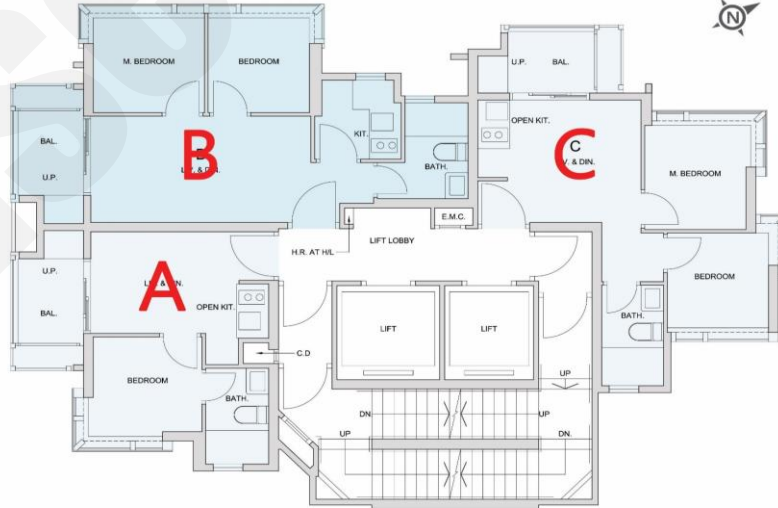
臻爾

價單1號

以最高20%折扣計算

制作日期: 2025-11-21

A : 1房 212'/249'/250'		
樓層	訂價	折實價20%
2	\$6,462,000 @\$30,481	\$5,169,600 @\$24,385
3	\$6,147,000 @\$24,588	\$4,917,600 @\$19,670
5	\$6,197,000 @\$24,788	\$4,957,600 @\$19,830
6	\$6,247,000 @\$24,988	\$4,997,600 @\$19,990
7	\$6,375,000 @\$25,500	\$5,100,000 @\$20,400
8	\$6,426,000 @\$25,704	\$5,140,800 @\$20,563
9	\$6,451,000 @\$25,908	\$5,160,800 @\$20,726
10	\$6,502,000 @\$26,112	\$5,201,600 @\$20,890



B : 2房 343'/380'		
樓層	訂價	折實價20%
2	\$9,277,000 @\$27,047	\$7,421,600 @\$21,637
3	\$9,161,000 @\$24,108	\$7,328,800 @\$19,286
5	\$9,235,000 @\$24,303	\$7,388,000 @\$19,442
6	\$9,310,000 @\$24,500	\$7,448,000 @\$19,600
7	\$9,500,000 @\$25,000	\$7,600,000 @\$20,000
8	\$9,576,000 @\$25,200	\$7,660,800 @\$20,160
9	\$9,652,000 @\$25,400	\$7,721,600 @\$20,320
10	\$9,730,000 @\$25,605	\$7,784,000 @\$20,484
11	\$9,807,000 @\$25,808	\$7,845,600 @\$20,646
12	\$9,886,000 @\$26,016	\$7,908,800 @\$20,813

C : 2房 259'/298'/336'		
樓層	訂價	折實價20%
2	\$8,665,000 @\$29,077	\$6,932,000 @\$23,262
3	\$8,591,000 @\$25,568	\$6,872,800 @\$20,455
5	\$8,668,000 @\$25,798	\$6,934,400 @\$20,638
6	\$8,738,000 @\$26,006	\$6,990,400 @\$20,805
7	\$8,917,000 @\$26,539	\$7,133,600 @\$21,231
8	\$8,988,000 @\$26,750	\$7,190,400 @\$21,400
9	\$6,512,000 @\$25,143	\$5,209,600 @\$20,114
10	\$6,565,000 @\$25,347	\$5,252,000 @\$20,278
11	\$6,617,000 @\$25,548	\$5,293,600 @\$20,439
12	\$6,670,000 @\$25,753	\$5,336,000 @\$20,602
15	\$6,723,000 @\$25,958	\$5,378,400 @\$20,766
16	\$6,858,000 @\$26,479	\$5,486,400 @\$21,183

紅色為最高售價、最高平均呎價；藍色為最低售價、最低平均呎價