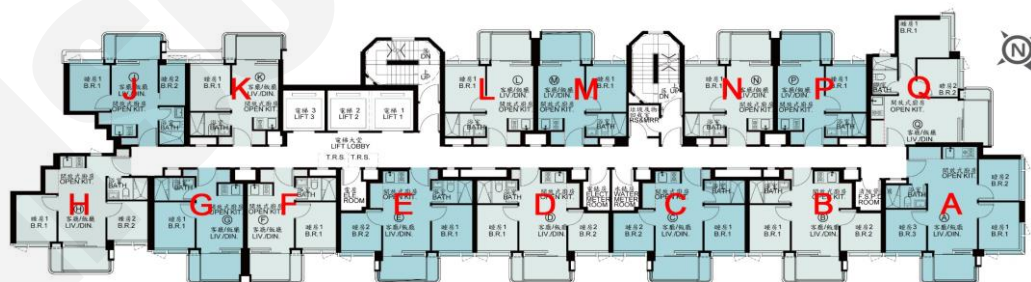


## 壹沐 1期

## 價單1號

以最高10%折扣計算

制作日期: 2025-09-04



A : 3房 465'		
樓層	訂價	折實價10%
5	\$8,387,000 @\$18,037	\$7,548,300 @\$16,233
6	\$8,499,000 @\$18,277	\$7,649,100 @\$16,450
7	\$8,582,000 @\$18,456	\$7,723,800 @\$16,610
8	\$8,749,000 @\$18,815	\$7,874,100 @\$16,934
20	\$9,446,000 @\$20,314	\$8,501,400 @\$18,283
29	\$9,891,000 @\$21,271	\$8,901,900 @\$19,144

D : 2房 349'		
樓層	訂價	折實價10%
5	\$6,320,000 @\$18,109	\$5,688,000 @\$16,298
6	\$6,414,000 @\$18,378	\$5,772,600 @\$16,540
7	\$6,478,000 @\$18,562	\$5,830,200 @\$16,705
8	\$6,607,000 @\$18,931	\$5,946,300 @\$17,038
9	\$6,607,000 @\$18,931	\$5,946,300 @\$17,038
10	\$6,671,000 @\$19,115	\$6,003,900 @\$17,203
11	\$6,800,000 @\$19,484	\$6,120,000 @\$17,536
12	\$6,885,000 @\$19,728	\$6,196,500 @\$17,755
15	\$6,928,000 @\$19,851	\$6,235,200 @\$17,866
16	\$6,971,000 @\$19,974	\$6,273,900 @\$17,977
17	\$7,014,000 @\$20,097	\$6,312,600 @\$18,088
18	\$7,100,000 @\$20,344	\$6,390,000 @\$18,309
19	\$7,100,000 @\$20,344	\$6,390,000 @\$18,309
20	\$7,142,000 @\$20,464	\$6,427,800 @\$18,418
21	\$7,185,000 @\$20,587	\$6,466,500 @\$18,529
22	\$7,228,000 @\$20,711	\$6,505,200 @\$18,640
23	\$7,271,000 @\$20,834	\$6,543,900 @\$18,750
25	\$7,314,000 @\$20,957	\$6,582,600 @\$18,861
26	\$7,357,000 @\$21,080	\$6,621,300 @\$18,972
27	\$7,400,000 @\$21,203	\$6,660,000 @\$19,083
28	\$7,485,000 @\$21,447	\$6,736,500 @\$19,302
29	\$7,485,000 @\$21,447	\$6,736,500 @\$19,302
30	\$7,528,000 @\$21,570	\$6,775,200 @\$19,413
31	\$7,571,000 @\$21,693	\$6,813,900 @\$19,524
32	\$7,914,000 @\$22,676	\$7,122,600 @\$20,409

E : 2房 350'		
樓層	訂價	折實價10%
5	\$6,368,000 @\$18,194	\$5,731,200 @\$16,375
6	\$6,454,000 @\$18,440	\$5,808,600 @\$16,596
7	\$6,518,000 @\$18,623	\$5,866,200 @\$16,761
8	\$6,646,000 @\$18,989	\$5,981,400 @\$17,090
9	\$6,646,000 @\$18,989	\$5,981,400 @\$17,090
10	\$6,711,000 @\$19,174	\$6,039,900 @\$17,257
11	\$6,839,000 @\$19,540	\$6,155,100 @\$17,586
12	\$6,925,000 @\$19,786	\$6,232,500 @\$17,807
15	\$6,968,000 @\$19,909	\$6,271,200 @\$17,918
16	\$7,011,000 @\$20,031	\$6,309,900 @\$18,028
17	\$7,054,000 @\$20,154	\$6,348,600 @\$18,139
18	\$7,139,000 @\$20,397	\$6,425,100 @\$18,357
19	\$7,139,000 @\$20,397	\$6,425,100 @\$18,357
20	\$7,182,000 @\$20,520	\$6,463,800 @\$18,468
21	\$7,225,000 @\$20,643	\$6,502,500 @\$18,579
22	\$7,268,000 @\$20,766	\$6,541,200 @\$18,689
23	\$7,311,000 @\$20,889	\$6,579,900 @\$18,800
25	\$7,353,000 @\$21,009	\$6,617,700 @\$18,908
26	\$7,396,000 @\$21,131	\$6,656,400 @\$19,018
27	\$7,439,000 @\$21,254	\$6,695,100 @\$19,129
28	\$7,525,000 @\$21,500	\$6,772,500 @\$19,350
29	\$7,525,000 @\$21,500	\$6,772,500 @\$19,350
30	\$7,568,000 @\$21,623	\$6,811,200 @\$19,461
31	\$7,611,000 @\$21,746	\$6,849,900 @\$19,571
32	\$7,953,000 @\$22,723	\$7,157,700 @\$20,451

L : 1房 272'		
樓層	訂價	折實價10%
5	\$5,070,000 @\$18,640	\$4,563,000 @\$16,776
6	\$5,095,000 @\$18,732	\$4,585,500 @\$16,858
7	\$5,111,000 @\$18,790	\$4,599,900 @\$16,911
8	\$5,143,000 @\$18,908	\$4,628,700 @\$17,017
9	\$5,143,000 @\$18,908	\$4,628,700 @\$17,017
10	\$5,159,000 @\$18,967	\$4,643,100 @\$17,070
11	\$5,176,000 @\$19,029	\$4,658,400 @\$17,126
12	\$5,192,000 @\$19,088	\$4,672,800 @\$17,179
15	\$5,208,000 @\$19,147	\$4,687,200 @\$17,232
16	\$5,256,000 @\$19,324	\$4,730,400 @\$17,391
17	\$5,272,000 @\$19,382	\$4,744,800 @\$17,444
18	\$5,304,000 @\$19,500	\$4,773,600 @\$17,550
19	\$5,304,000 @\$19,500	\$4,773,600 @\$17,550
20	\$5,320,000 @\$19,559	\$4,788,000 @\$17,603
21	\$5,336,000 @\$19,618	\$4,802,400 @\$17,656
22	\$5,352,000 @\$19,676	\$4,816,800 @\$17,709
23	\$5,368,000 @\$19,735	\$4,831,200 @\$17,762
25	\$5,400,000 @\$19,853	\$4,860,000 @\$17,868
26	\$5,433,000 @\$19,974	\$4,889,700 @\$17,977
27	\$5,449,000 @\$20,033	\$4,904,100 @\$18,030
28	\$5,481,000 @\$20,151	\$4,932,900 @\$18,136
29	\$5,481,000 @\$20,151	\$4,932,900 @\$18,136
30	\$5,497,000 @\$20,210	\$4,947,300 @\$18,189
31	\$5,513,000 @\$20,268	\$4,961,700 @\$18,242
32	\$5,770,000 @\$21,213	\$5,193,000 @\$19,092

紅色為最高售價、最高平均呎價；藍色為最低售價、最低平均呎價