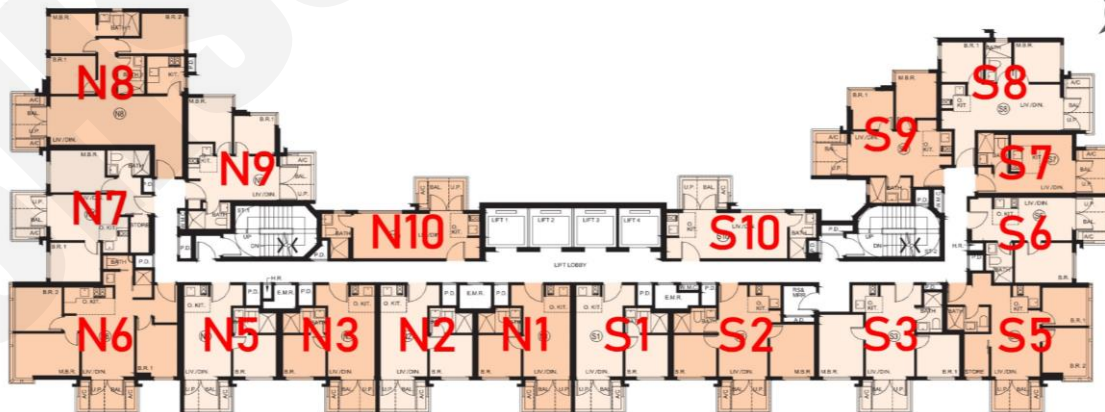


S9 :2房 356'		
樓層	訂價	折實價16%
5	\$10,133,000 @\$28,463	\$8,511,720 @\$23,909
6	\$10,185,000 @\$28,610	\$8,555,400 @\$24,032
7	\$10,234,000 @\$28,747	\$8,596,560 @\$24,148
8	\$10,338,000 @\$29,039	\$8,683,920 @\$24,393
9	\$10,348,000 @\$29,067	\$8,692,320 @\$24,417
10	\$10,401,000 @\$29,216	\$8,736,840 @\$24,542
11	\$10,777,000 @\$30,272	\$9,052,680 @\$25,429
12	\$10,995,000 @\$30,885	\$9,235,800 @\$25,943
15	\$11,051,000 @\$31,042	\$9,282,840 @\$26,075
16	\$11,107,000 @\$31,199	\$9,329,880 @\$26,208
17	\$11,163,000 @\$31,357	\$9,376,920 @\$26,340
18	\$11,273,000 @\$31,666	\$9,469,320 @\$26,599
19	\$11,284,000 @\$31,697	\$9,478,560 @\$26,625
20	\$11,340,000 @\$31,854	\$9,525,600 @\$26,757
21	\$11,396,000 @\$32,011	\$9,572,640 @\$26,889
22	\$11,454,000 @\$32,174	\$9,621,360 @\$27,026
23	\$11,510,000 @\$32,331	\$9,668,400 @\$27,158
25	\$11,567,000 @\$32,492	\$9,716,280 @\$27,293
26	\$11,626,000 @\$32,657	\$9,765,840 @\$27,432
27	\$11,800,000 @\$33,146	\$9,912,000 @\$27,843



N8 :3房 611'		
樓層	訂價	折實價16%
6	\$17,901,000 @\$29,298	\$15,036,840 @\$24,610
7	\$17,990,000 @\$29,444	\$15,111,600 @\$24,733
8	\$18,172,000 @\$29,741	\$15,264,480 @\$24,983
9	\$18,189,000 @\$29,769	\$15,278,760 @\$25,006
10	\$18,280,000 @\$29,918	\$15,355,200 @\$25,131

N9 :2房 348'		
樓層	訂價	折實價16%
6	\$9,864,000 @\$28,345	\$8,285,760 @\$23,810
7	\$9,914,000 @\$28,489	\$8,327,760 @\$23,930
8	\$10,013,000 @\$28,773	\$8,410,920 @\$24,169
9	\$10,023,000 @\$28,802	\$8,419,320 @\$24,193
10	\$10,076,000 @\$28,954	\$8,463,840 @\$24,321
11	\$10,438,000 @\$29,994	\$8,767,920 @\$25,195
12	\$10,651,000 @\$30,606	\$8,946,840 @\$25,709
15	\$10,704,000 @\$30,759	\$8,991,360 @\$25,837
16	\$10,758,000 @\$30,914	\$9,036,720 @\$25,968
17	\$10,813,000 @\$31,072	\$9,082,920 @\$26,100
18	\$10,920,000 @\$31,379	\$9,172,800 @\$26,359
19	\$10,930,000 @\$31,408	\$9,181,200 @\$26,383
20	\$10,984,000 @\$31,563	\$9,226,560 @\$26,513
21	\$11,040,000 @\$31,724	\$9,273,600 @\$26,648
22	\$11,094,000 @\$31,879	\$9,318,960 @\$26,779
23	\$11,150,000 @\$32,040	\$9,366,000 @\$26,914
25	\$11,205,000 @\$32,198	\$9,412,200 @\$27,047
26	\$11,261,000 @\$32,359	\$9,459,240 @\$27,182
27	\$11,429,000 @\$32,842	\$9,600,360 @\$27,587

S8 :2房 390'		
樓層	訂價	折實價16%
6	\$10,819,000 @\$27,741	\$9,087,960 @\$23,302
7	\$10,841,000 @\$27,797	\$9,106,440 @\$23,350
8	\$10,917,000 @\$27,992	\$9,170,280 @\$23,514
9	\$10,928,000 @\$28,021	\$9,179,520 @\$23,537
10	\$10,982,000 @\$28,159	\$9,224,880 @\$23,654
11	\$11,038,000 @\$28,303	\$9,271,920 @\$23,774
12	\$11,438,000 @\$29,328	\$9,607,920 @\$24,636
15	\$11,670,000 @\$29,923	\$9,802,800 @\$25,135
16	\$11,727,000 @\$30,069	\$9,850,680 @\$25,258
17	\$11,788,000 @\$30,226	\$9,901,920 @\$25,390
18	\$11,905,000 @\$30,526	\$10,000,200 @\$25,642
19	\$11,916,000 @\$30,554	\$10,009,440 @\$25,665
20	\$11,976,000 @\$30,708	\$10,059,840 @\$25,794
21	\$12,035,000 @\$30,859	\$10,109,400 @\$25,922
22	\$12,096,000 @\$31,015	\$10,160,640 @\$26,053
23	\$12,155,000 @\$31,167	\$10,210,200 @\$26,180
25	\$12,216,000 @\$31,323	\$10,261,440 @\$26,311
26	\$12,276,000 @\$31,477	\$10,311,840 @\$26,441
27	\$12,460,000 @\$31,949	\$10,466,400 @\$26,837

N1 :1房 280'		
樓層	訂價	折實價16%
6	\$7,647,000 @\$27,311	\$6,423,480 @\$22,941
7	\$7,686,000 @\$27,450	\$6,456,240 @\$23,058
8	\$7,765,000 @\$27,732	\$6,522,600 @\$23,295

S5 :2房 421'		
樓層	訂價	折實價16%
6	\$11,673,000 @\$27,727	\$9,805,320 @\$23,291
7	\$11,732,000 @\$27,867	\$9,854,880 @\$23,408
8	\$11,850,000 @\$28,147	\$9,954,000 @\$23,644
9	\$11,861,000 @\$28,173	\$9,963,240 @\$23,666
10	\$11,920,000 @\$28,314	\$10,012,800 @\$23,783

N6 :3房 538'		
樓層	訂價	折實價16%
6	\$15,202,000 @\$28,257	\$12,769,680 @\$23,735
7	\$15,278,000 @\$28,398	\$12,833,520 @\$23,854
8	\$15,432,000 @\$28,684	\$12,962,880 @\$24,095
9	\$15,448,000 @\$28,714	\$12,976,320 @\$24,120
10	\$15,525,000 @\$28,857	\$13,041,000 @\$24,240

紅色為最高售價、最高平均呎價；藍色為最低售價、最低平均呎價