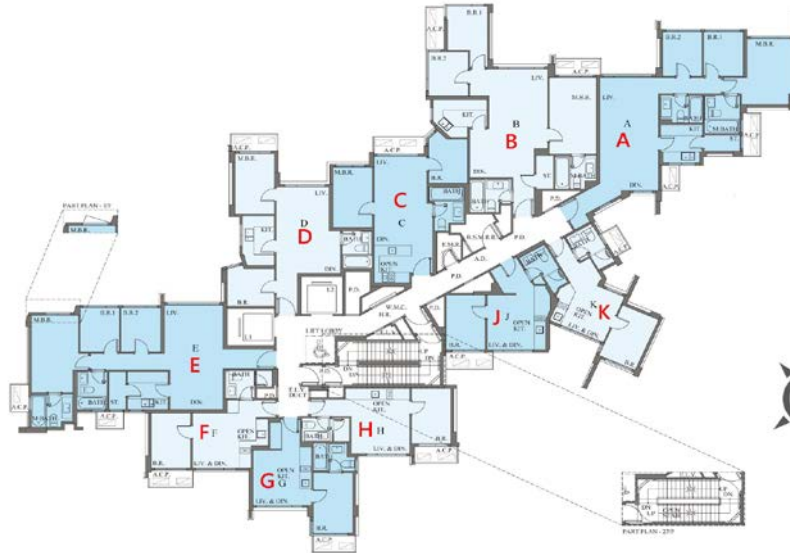


J: 1房 286'		
樓層	訂價	折實價16%
23	\$5,414,000 @\$18,930	\$4,547,760 @\$15,901
22	\$5,393,000 @\$18,857	\$4,530,120 @\$15,840
21	\$5,377,000 @\$18,801	\$4,516,680 @\$15,793
20	\$5,367,000 @\$18,766	\$4,508,280 @\$15,763
19	\$5,356,000 @\$18,727	\$4,499,040 @\$15,731
11	\$5,168,000 @\$18,070	\$4,341,120 @\$15,179
10	\$5,139,000 @\$17,969	\$4,316,760 @\$15,094
9	\$5,110,000 @\$17,867	\$4,292,400 @\$15,008
8	\$5,060,000 @\$17,692	\$4,250,400 @\$14,862
7	\$5,033,000 @\$17,598	\$4,227,720 @\$14,782
6	\$5,004,000 @\$17,497	\$4,203,360 @\$14,697
5	\$4,965,000 @\$17,360	\$4,170,600 @\$14,583
3	\$4,925,000 @\$17,220	\$4,137,000 @\$14,465
2	\$4,850,000 @\$16,958	\$4,074,000 @\$14,245
1	\$4,763,000 @\$16,654	\$4,000,920 @\$13,989
E: 3房連套房 714'/717'		
樓層	訂價	折實價19%
23	\$14,631,000 @\$20,492	\$11,851,110 @\$16,598
22	\$14,587,000 @\$20,430	\$11,815,470 @\$16,548
21	\$14,543,000 @\$20,368	\$11,779,830 @\$16,498
20	\$14,360,000 @\$20,112	\$11,631,600 @\$16,291
17	\$14,134,000 @\$19,796	\$11,448,540 @\$16,034
16	\$14,092,000 @\$19,737	\$11,414,520 @\$15,987
15	\$14,049,000 @\$19,676	\$11,379,690 @\$15,938
12	\$14,008,000 @\$19,619	\$11,346,480 @\$15,891
7	\$13,625,000 @\$19,083	\$11,036,250 @\$15,457
6	\$13,489,000 @\$18,892	\$10,926,090 @\$15,303
5	\$13,286,000 @\$18,608	\$10,761,660 @\$15,072
3	\$13,088,000 @\$18,331	\$10,601,280 @\$14,848
2	\$12,879,000 @\$17,962	\$10,431,990 @\$14,549
H: 1房 287'		
樓層	訂價	折實價16%
11	\$5,486,000 @\$19,115	\$4,608,240 @\$16,057
10	\$5,463,000 @\$19,035	\$4,588,920 @\$15,989
9	\$5,441,000 @\$18,958	\$4,570,440 @\$15,925
8	\$5,386,000 @\$18,767	\$4,524,240 @\$15,764
7	\$5,364,000 @\$18,690	\$4,505,760 @\$15,700
6	\$5,343,000 @\$18,617	\$4,488,120 @\$15,638
5	\$5,300,000 @\$18,467	\$4,452,000 @\$15,512
3	\$5,257,000 @\$18,317	\$4,415,880 @\$15,386
2	\$5,180,000 @\$18,049	\$4,351,200 @\$15,161
1	\$5,086,000 @\$17,721	\$4,272,240 @\$14,886



D: 2房 466/468'		
樓層	訂價	折實價16%
23	\$9,827,000 @\$21,088	\$8,254,680 @\$17,714
22	\$9,780,000 @\$20,987	\$8,215,200 @\$17,629
21	\$9,730,000 @\$20,880	\$8,173,200 @\$17,539
20	\$9,589,000 @\$20,577	\$8,054,760 @\$17,285
17	\$9,401,000 @\$20,174	\$7,896,840 @\$16,946
16	\$9,344,000 @\$20,052	\$7,848,960 @\$16,843
15	\$9,288,000 @\$19,931	\$7,801,920 @\$16,742
12	\$9,270,000 @\$19,893	\$7,786,800 @\$16,710
11	\$9,252,000 @\$19,854	\$7,771,680 @\$16,677
10	\$9,143,000 @\$19,620	\$7,680,120 @\$16,481
9	\$9,126,000 @\$19,584	\$7,665,840 @\$16,450
8	\$9,107,000 @\$19,543	\$7,649,880 @\$16,416
7	\$9,089,000 @\$19,504	\$7,634,760 @\$16,384
6	\$9,062,000 @\$19,446	\$7,612,080 @\$16,335
5	\$9,034,000 @\$19,386	\$7,588,560 @\$16,284
3	\$8,990,000 @\$19,292	\$7,551,600 @\$16,205
2	\$8,872,000 @\$19,039	\$7,452,480 @\$15,992
1	\$8,776,000 @\$18,752	\$7,371,840 @\$15,752
G: 1房 274'/278'		
樓層	訂價	折實價16%
11	\$4,959,000 @\$18,099	\$4,165,560 @\$15,203
10	\$4,944,000 @\$18,044	\$4,152,960 @\$15,157
9	\$4,930,000 @\$17,993	\$4,141,200 @\$15,114
8	\$4,913,000 @\$17,931	\$4,126,920 @\$15,062
7	\$4,900,000 @\$17,883	\$4,116,000 @\$15,022
3	\$4,806,000 @\$17,540	\$4,037,040 @\$14,734
2	\$4,735,000 @\$17,281	\$3,977,400 @\$14,516
1	\$4,718,000 @\$16,971	\$3,963,120 @\$14,256

C: 2房 442'		
樓層	訂價	折實價16%
23	\$9,102,000 @\$20,593	\$7,645,680 @\$17,298
22	\$9,068,000 @\$20,516	\$7,617,120 @\$17,233
21	\$9,031,000 @\$20,432	\$7,586,040 @\$17,163
20	\$8,909,000 @\$20,156	\$7,483,560 @\$16,931
17	\$8,751,000 @\$19,799	\$7,350,840 @\$16,631
16	\$8,708,000 @\$19,701	\$7,314,720 @\$16,549
15	\$8,664,000 @\$19,602	\$7,277,760 @\$16,466
12	\$8,646,000 @\$19,561	\$7,262,640 @\$16,431
11	\$8,629,000 @\$19,523	\$7,248,360 @\$16,399
10	\$8,528,000 @\$19,294	\$7,163,520 @\$16,207
9	\$8,512,000 @\$19,258	\$7,150,080 @\$16,177
8	\$8,495,000 @\$19,219	\$7,135,800 @\$16,144
7	\$8,477,000 @\$19,179	\$7,120,680 @\$16,110
6	\$8,452,000 @\$19,122	\$7,099,680 @\$16,063
5	\$8,427,000 @\$19,066	\$7,078,680 @\$16,015
3	\$8,385,000 @\$18,971	\$7,043,400 @\$15,935
2	\$8,275,000 @\$18,722	\$6,951,000 @\$15,726
1	\$8,151,000 @\$18,441	\$6,846,840 @\$15,491
B: 3房連套房 729'		
樓層	訂價	折實價19%
6	\$14,696,000 @\$20,159	\$11,903,760 @\$16,329
5	\$14,636,000 @\$20,077	\$11,855,180 @\$16,262
3	\$14,519,000 @\$19,916	\$11,760,390 @\$16,132
2	\$14,330,000 @\$19,657	\$11,607,300 @\$15,922
1	\$14,115,000 @\$19,362	\$11,433,150 @\$15,683

K: 1房 273'		
樓層	訂價	折實價16%
11	\$4,864,000 @\$17,817	\$4,085,760 @\$14,966
10	\$4,845,000 @\$17,747	\$4,069,800 @\$14,908
9	\$4,827,000 @\$17,681	\$4,054,680 @\$14,852
8	\$4,778,000 @\$17,502	\$4,013,520 @\$14,702
7	\$4,758,000 @\$17,429	\$3,996,720 @\$14,640
3	\$4,663,000 @\$17,081	\$3,916,920 @\$14,348
2	\$4,593,000 @\$16,824	\$3,858,120 @\$14,132
1	\$4,510,000 @\$16,520	\$3,788,400 @\$13,877
A: 3房連套房 736'		
樓層	訂價	折實價19%
6	\$14,763,000 @\$20,058	\$11,958,030 @\$16,247
5	\$14,674,000 @\$19,938	\$11,885,940 @\$16,149
3	\$14,557,000 @\$19,779	\$11,791,170 @\$16,021
2	\$14,441,000 @\$19,621	\$11,697,210 @\$15,893
1	\$14,223,000 @\$19,325	\$11,520,630 @\$15,653

紅色為最高售價、最高平均呎價；藍色為最低售價、最低平均呎價



3座A5: 2房 474'		
樓層	訂價	折實價16%
15	\$10,644,000 @\$22,456	<b>\$8,940,960</b> <b>@\$18,863</b>
12	\$10,601,000 @\$22,365	\$8,904,840 @\$18,787
11	\$10,558,000 @\$22,274	\$8,868,720 @\$18,710
10	\$10,517,000 @\$22,188	\$8,834,280 @\$18,638
9	\$10,474,000 @\$22,097	\$8,798,160 @\$18,562
8	\$10,474,000 @\$22,097	\$8,798,160 @\$18,562
7	\$10,389,000 @\$21,918	\$8,726,760 @\$18,411
6	\$10,348,000 @\$21,831	\$8,692,320 @\$18,338
5	\$10,327,000 @\$21,787	<b>\$8,674,680</b> <b>@\$18,301</b>
3座A2: 3房連套房及儲物室 727'		
樓層	訂價	折實價16%
15	\$15,612,000 @\$21,475	<b>\$13,114,080</b> <b>@\$18,039</b>
12	\$15,550,000 @\$21,389	\$13,062,000 @\$17,967
11	\$15,489,000 @\$21,305	\$13,010,760 @\$17,897
10	\$15,427,000 @\$21,220	\$12,958,680 @\$17,825
9	\$15,367,000 @\$21,138	\$12,908,280 @\$17,756
8	\$15,367,000 @\$21,138	\$12,908,280 @\$17,756
7	\$15,245,000 @\$20,970	\$12,805,800 @\$17,615
6	\$15,186,000 @\$20,889	\$12,756,240 @\$17,546
5	\$15,156,000 @\$20,847	<b>\$12,731,040</b> <b>@\$17,512</b>



紅色為最高售價、最高平均呎價；藍色為最低售價、最低平均呎價

以上的物業資料只供參考，一切以發展商最新公布為準，如有任何資料錯漏本網頁不會承擔任何責任。



柏瓏I

價單1號

以最高16%折扣計算  
制作日期: 2022-04-21



5座B8: 1房 354'		
樓層	訂價	折實價16%
16	\$7,967,000 @\$22,506	<b>\$6,692,280</b> <b>@\$18,905</b>
15	\$7,927,000 @\$22,393	\$6,658,680 @\$18,810
12	\$7,887,000 @\$22,280	\$6,625,080 @\$18,715
11	\$7,846,000 @\$22,164	\$6,590,640 @\$18,618
10	\$7,807,000 @\$22,054	\$6,557,880 @\$18,525
9	\$7,768,000 @\$21,944	\$6,525,120 @\$18,433
8	\$7,768,000 @\$21,944	\$6,525,120 @\$18,433
7	\$7,689,000 @\$21,720	\$6,458,760 @\$18,245
6	\$7,651,000 @\$21,613	\$6,426,840 @\$18,155
5	\$7,596,000 @\$21,458	\$6,380,640 @\$18,024
3	\$7,543,000 @\$21,308	\$6,336,120 @\$17,899
2	\$7,490,000 @\$21,158	\$6,291,600 @\$17,773
1	\$7,437,000 @\$21,008	<b>\$6,247,080</b> <b>@\$17,647</b>

5座B7: 2房 464'		
樓層	訂價	折實價16%
16	\$9,820,000 @\$21,164	\$8,248,800 @\$17,778
15	\$9,771,000 @\$21,058	\$8,207,640 @\$17,689
12	\$9,723,000 @\$20,955	\$8,167,320 @\$17,602
11	\$9,674,000 @\$20,849	\$8,126,160 @\$17,513
10	\$9,626,000 @\$20,746	\$8,085,840 @\$17,426
9	\$9,579,000 @\$20,644	\$8,046,360 @\$17,341
8	\$9,579,000 @\$20,644	\$8,046,360 @\$17,341
7	\$9,483,000 @\$20,438	\$7,965,720 @\$17,168
6	\$9,436,000 @\$20,336	\$7,926,240 @\$17,082
5	\$9,370,000 @\$20,194	\$7,870,800 @\$16,963
3	\$9,305,000 @\$20,054	\$7,816,200 @\$16,845
2	\$9,240,000 @\$19,914	\$7,761,600 @\$16,728
1	\$9,176,000 @\$19,776	\$7,707,840 @\$16,612

5座B6: 2房 464'		
樓層	訂價	折實價16%
16	\$9,800,000 @\$21,121	\$8,232,000 @\$17,741
15	\$9,751,000 @\$21,015	\$8,190,840 @\$17,653
12	\$9,702,000 @\$20,909	\$8,149,680 @\$17,564
11	\$9,655,000 @\$20,808	\$8,110,200 @\$17,479
10	\$9,607,000 @\$20,705	\$8,069,880 @\$17,392
9	\$9,558,000 @\$20,599	\$8,028,720 @\$17,303
8	\$9,558,000 @\$20,599	\$8,028,720 @\$17,303
7	\$9,464,000 @\$20,397	\$7,949,760 @\$17,133
6	\$9,417,000 @\$20,295	\$7,910,280 @\$17,048
5	\$9,351,000 @\$20,153	\$7,854,840 @\$16,929
3	\$9,287,000 @\$20,015	\$7,801,080 @\$16,813
2	\$9,223,000 @\$19,877	\$7,747,320 @\$16,697
1	\$9,158,000 @\$19,737	<b>\$7,692,720</b> <b>@\$16,579</b>

5座B5: 1房及儲物室 384'		
樓層	訂價	折實價16%
16	\$8,556,000 @\$22,281	\$7,187,040 @\$18,716
15	\$8,514,000 @\$22,172	\$7,151,760 @\$18,624
12	\$8,471,000 @\$22,060	\$7,115,640 @\$18,530
11	\$8,430,000 @\$21,953	\$7,081,200 @\$18,441
10	\$8,387,000 @\$21,841	\$7,045,080 @\$18,347
9	\$8,345,000 @\$21,732	\$7,009,800 @\$18,255
8	\$8,345,000 @\$21,732	\$7,009,800 @\$18,255
7	\$8,263,000 @\$21,518	\$6,940,920 @\$18,075
6	\$8,221,000 @\$21,409	\$6,905,640 @\$17,983
5	\$8,164,000 @\$21,260	\$6,857,760 @\$17,859
3	\$8,108,000 @\$21,115	\$6,810,720 @\$17,736
2	\$8,051,000 @\$20,966	\$6,762,840 @\$17,612
1	\$7,995,000 @\$20,820	\$6,715,800 @\$17,489

5座A5: 3房連套房及工人套房 762'		
樓層	訂價	折實價16%
15	\$16,660,000 @\$21,864	<b>\$13,994,400</b> <b>@\$18,365</b>
12	\$16,593,000 @\$21,776	\$13,938,120 @\$18,291
11	\$16,526,000 @\$21,688	\$13,881,840 @\$18,218
10	\$16,461,000 @\$21,602	\$13,827,240 @\$18,146
9	\$16,395,000 @\$21,516	\$13,771,800 @\$18,073
8	\$16,395,000 @\$21,516	\$13,771,800 @\$18,073
7	\$16,264,000 @\$21,344	\$13,661,760 @\$17,929
6	\$16,199,000 @\$21,259	\$13,607,160 @\$17,857
5	\$16,167,000 @\$21,217	\$13,580,280 @\$17,822
5	\$8,164,000 @\$21,260	\$6,857,760 @\$17,859

5座B3: 1房及儲物室 382'		
樓層	訂價	折實價16%
16	\$8,492,000 @\$22,230	\$7,133,280 @\$18,674
15	\$8,449,000 @\$22,118	\$7,097,160 @\$18,579
12	\$8,407,000 @\$22,008	\$7,061,880 @\$18,487
11	\$8,365,000 @\$21,898	\$7,026,600 @\$18,394
10	\$8,324,000 @\$21,791	\$6,992,160 @\$18,304
9	\$8,282,000 @\$21,681	\$6,956,880 @\$18,212
8	\$8,282,000 @\$21,681	\$6,956,880 @\$18,212
7	\$8,200,000 @\$21,466	\$6,888,000 @\$18,031
6	\$8,160,000 @\$21,361	\$6,854,400 @\$17,943
5	\$8,102,000 @\$21,209	\$6,805,680 @\$17,816
3	\$8,046,000 @\$21,063	\$6,758,640 @\$17,693
2	\$7,990,000 @\$20,916	\$6,711,600 @\$17,570
1	\$7,935,000 @\$20,772	\$6,665,400 @\$17,449

5座B2: 2房及儲物室 547/557'		
樓層	訂價	折實價16%
16	\$11,399,000 @\$20,839	\$9,575,160 @\$17,505
15	\$11,370,000 @\$20,786	\$9,550,800 @\$17,460
12	\$11,343,000 @\$20,737	\$9,528,120 @\$17,419
11	\$11,314,000 @\$20,684	\$9,503,760 @\$17,374
10	\$11,287,000 @\$20,634	\$9,481,080 @\$17,333
9	\$11,260,000 @\$20,585	\$9,458,400 @\$17,291
8	\$11,260,000 @\$20,585	\$9,458,400 @\$17,291
7	\$11,204,000 @\$20,483	\$9,411,360 @\$17,205
6	\$11,176,000 @\$20,431	\$9,387,840 @\$17,162
5	\$11,132,000 @\$20,351	\$9,350,880 @\$17,095
3	\$11,088,000 @\$20,271	\$9,313,920 @\$17,027
2	\$11,044,000 @\$20,190	\$9,276,960 @\$16,960
1	\$11,200,000 @\$20,108	\$9,408,000 @\$16,890

紅色為最高售價、最高平均呎價；藍色為最低售價、最低平均呎價





