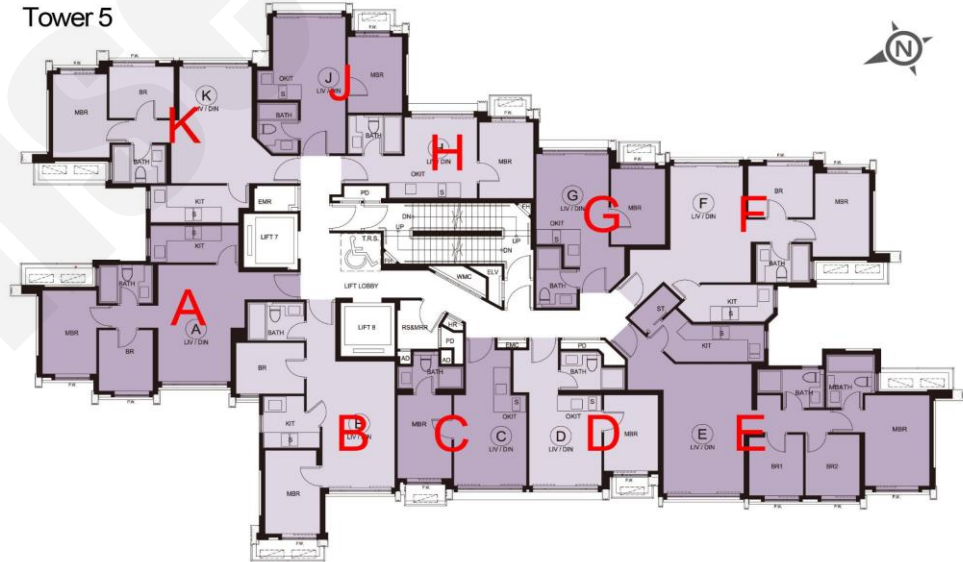


Tower 5



G : 1房 283'		
樓層	訂價	折實價15%
20	\$4,644,000 @\$16,410	\$3,947,400 @\$13,948
19	\$4,575,000 @\$16,166	\$3,888,750 @\$13,741
18	\$4,508,000 @\$15,929	\$3,831,800 @\$13,540
17	\$4,441,000 @\$15,693	\$3,774,850 @\$13,339
16	\$4,397,000 @\$15,537	\$3,737,450 @\$13,207
15	\$4,353,000 @\$15,382	\$3,700,050 @\$13,074
12	\$4,310,000 @\$15,230	\$3,663,500 @\$12,945
11	\$4,268,000 @\$15,081	\$3,627,800 @\$12,819
10	\$4,225,000 @\$14,929	\$3,591,250 @\$12,690
9	\$4,183,000 @\$14,781	\$3,555,550 @\$12,564
8	\$4,142,000 @\$14,636	\$3,520,700 @\$12,441
7	\$4,101,000 @\$14,491	\$3,485,850 @\$12,317
6	\$4,021,000 @\$14,208	\$3,417,850 @\$12,077
5	\$3,981,000 @\$14,067	\$3,383,850 @\$11,957
3	\$3,942,000 @\$13,929	\$3,350,700 @\$11,840
2	\$3,865,000 @\$13,657	\$3,285,250 @\$11,609
1	\$3,788,000 @\$13,385	\$3,219,800 @\$11,377

D : 1房 281'		
樓層	訂價	折實價15%
20	\$4,619,000 @\$16,438	\$3,926,150 @\$13,972
19	\$4,573,000 @\$16,274	\$3,887,050 @\$13,833
18	\$4,550,000 @\$16,192	\$3,867,500 @\$13,763
17	\$4,528,000 @\$16,114	\$3,848,800 @\$13,697
16	\$4,505,000 @\$16,032	\$3,829,250 @\$13,627
15	\$4,483,000 @\$15,954	\$3,810,550 @\$13,561
12	\$4,461,000 @\$15,875	\$3,791,850 @\$13,494
11	\$4,416,000 @\$15,715	\$3,753,600 @\$13,358
10	\$4,394,000 @\$15,637	\$3,734,900 @\$13,291
9	\$4,351,000 @\$15,484	\$3,698,350 @\$13,161
8	\$4,329,000 @\$15,406	\$3,679,650 @\$13,095
7	\$4,307,000 @\$15,327	\$3,660,950 @\$13,028
6	\$4,286,000 @\$15,253	\$3,643,100 @\$12,965
5	\$4,264,000 @\$15,174	\$3,624,400 @\$12,898
3	\$4,243,000 @\$15,100	\$3,606,550 @\$12,835
2	\$4,202,000 @\$14,954	\$3,571,700 @\$12,711
1	\$4,160,000 @\$14,804	\$3,536,000 @\$12,584

K : 2房 480'		
樓層	訂價	折實價15%
17	\$7,308,000 @\$15,225	\$6,211,800 @\$12,941
16	\$7,236,000 @\$15,075	\$6,150,600 @\$12,814
15	\$7,164,000 @\$14,925	\$6,089,400 @\$12,686
12	\$7,093,000 @\$14,777	\$6,029,050 @\$12,561
11	\$7,022,000 @\$14,629	\$5,968,700 @\$12,435
10	\$6,953,000 @\$14,485	\$5,910,050 @\$12,313
9	\$6,884,000 @\$14,342	\$5,851,400 @\$12,190
8	\$6,816,000 @\$14,200	\$5,793,600 @\$12,070
7	\$6,750,000 @\$14,063	\$5,737,500 @\$11,953
6	\$6,617,000 @\$13,785	\$5,624,450 @\$11,718
5	\$6,551,000 @\$13,648	\$5,568,350 @\$11,601
3	\$6,485,000 @\$13,510	\$5,512,250 @\$11,484
2	\$6,358,000 @\$13,246	\$5,404,300 @\$11,259
1	\$6,235,000 @\$12,990	\$5,299,750 @\$11,041

C : 1房 283'		
樓層	訂價	折實價15%
7	\$4,330,000 @\$15,300	\$3,680,500 @\$13,005
6	\$4,309,000 @\$15,226	\$3,662,650 @\$12,942
5	\$4,287,000 @\$15,148	\$3,643,950 @\$12,876
3	\$4,267,000 @\$15,078	\$3,626,950 @\$12,816
2	\$4,224,000 @\$14,926	\$3,590,400 @\$12,687
1	\$4,182,000 @\$14,777	\$3,554,700 @\$12,561

B : 2房 462'		
樓層	訂價	折實價15%
20	\$7,140,000 @\$15,455	\$6,069,000 @\$13,136
19	\$7,070,000 @\$15,303	\$6,009,500 @\$13,008
18	\$7,034,000 @\$15,225	\$5,978,900 @\$12,941
17	\$6,999,000 @\$15,149	\$5,949,150 @\$12,877
5	\$6,592,000 @\$14,268	\$5,603,200 @\$12,128
3	\$6,560,000 @\$14,199	\$5,576,000 @\$12,069
2	\$6,495,000 @\$14,058	\$5,520,750 @\$11,950
1	\$6,430,000 @\$13,918	\$5,465,500 @\$11,830
G	\$6,273,000 @\$13,578	\$5,332,050 @\$11,541

H : 1房 266'		
樓層	訂價	折實價15%
12	\$4,108,000 @\$15,444	\$3,491,800 @\$13,127
11	\$4,068,000 @\$15,293	\$3,457,800 @\$12,999
10	\$4,027,000 @\$15,139	\$3,422,950 @\$12,868
9	\$3,986,000 @\$14,985	\$3,388,100 @\$12,737
8	\$3,948,000 @\$14,842	\$3,355,800 @\$12,616
7	\$3,909,000 @\$14,695	\$3,322,650 @\$12,491
6	\$3,831,000 @\$14,402	\$3,256,350 @\$12,242
5	\$3,795,000 @\$14,267	\$3,225,750 @\$12,127
3	\$3,756,000 @\$14,120	\$3,192,600 @\$12,002
2	\$3,682,000 @\$13,842	\$3,129,700 @\$11,766
1	\$3,611,000 @\$13,575	\$3,069,350 @\$11,539

E : 3房連套房 722'		
樓層	訂價	折實價17%
20	\$11,131,000 @\$15,417	\$9,238,730 @\$12,796
19	\$11,018,000 @\$15,260	\$9,144,940 @\$12,666
3	\$10,225,000 @\$14,162	\$8,486,750 @\$11,755
2	\$10,123,000 @\$14,021	\$8,402,090 @\$11,637
1	\$10,024,000 @\$13,884	\$8,319,920 @\$11,523

A : 2房 483'		
樓層	訂價	折實價15%
16	\$7,319,000 @\$15,153	\$6,221,150 @\$12,880
15	\$7,283,000 @\$15,079	\$6,190,550 @\$12,817
12	\$7,246,000 @\$15,002	\$6,159,100 @\$12,752
11	\$7,174,000 @\$14,853	\$6,097,900 @\$12,625
10	\$7,140,000 @\$14,783	\$6,069,000 @\$12,565
9	\$7,069,000 @\$14,636	\$6,008,650 @\$12,440
8	\$7,033,000 @\$14,561	\$5,978,050 @\$12,377
7	\$6,998,000 @\$14,489	\$5,948,300 @\$12,315
6	\$6,962,000 @\$14,414	\$5,917,700 @\$12,252

紅色為最高售價、最高平均呎價；藍色為最低售價、最低平均呎價