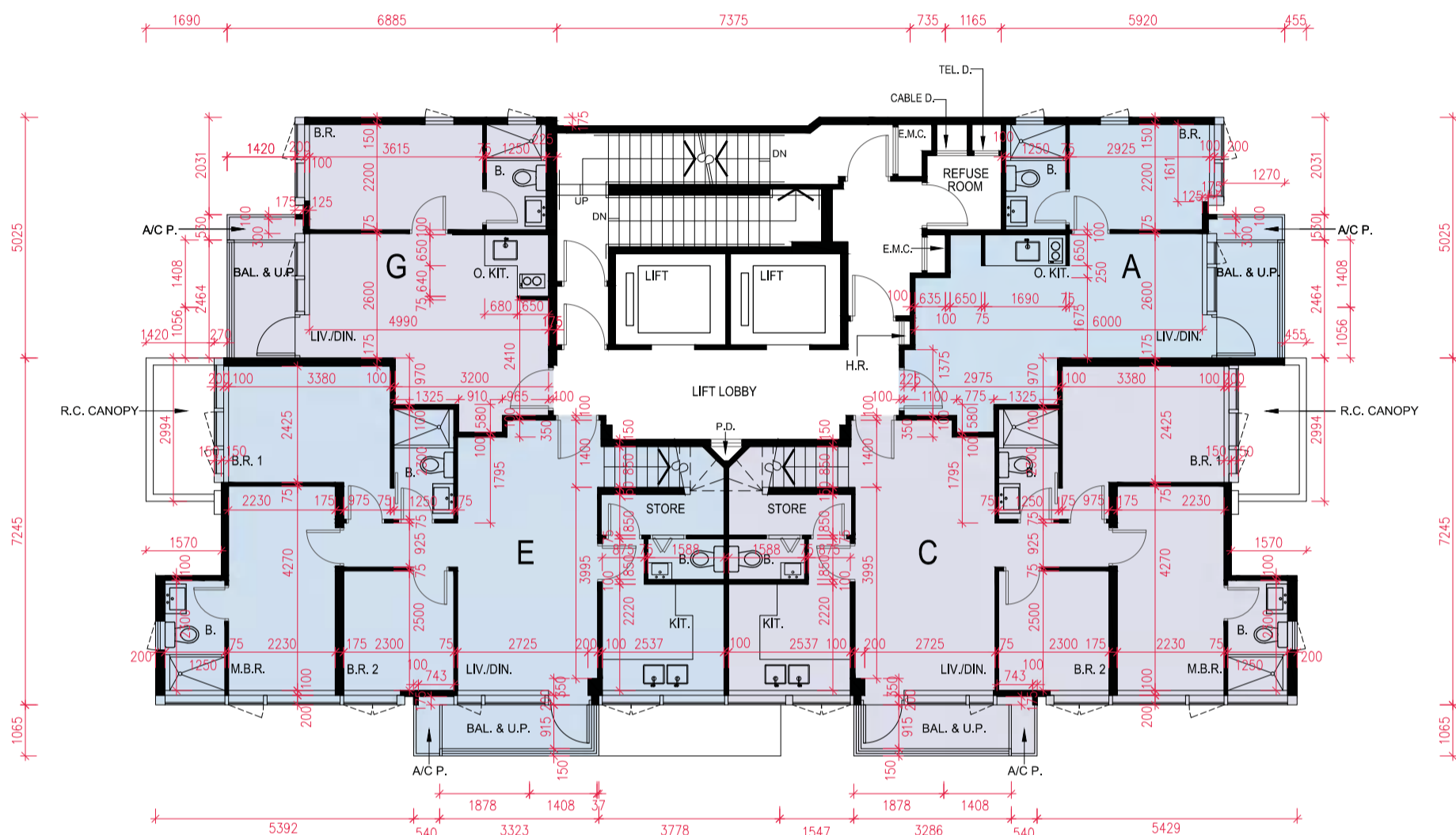


29/F FLOOR PLAN
二十九樓樓面平面圖



Scale 比例: 0 1 2 3 4 5M/米

Each Residential Property 每個住宅物業	Floor 樓層	Unit 單位			
		A	C	E	G
Floor-to-Floor Height (mm) 層與層之間的高度 (毫米)	二十九樓	3300, 3900, 4100	3300, 3700, 4050	3300, 3625, 3700	3300, 3500, 3700
Thickness of Floor Slabs (excluding plaster) (mm) 樓板(不包括灰泥)的厚度 (毫米)	29/F	150	150	150	150

The internal areas of the residential properties on the upper floors will generally be slightly larger than those on the lower floors because of the reducing thickness of the structural walls on the upper floors.

因住宅物業的較高樓層的結構牆的厚度遞減，較高樓層的內部面積，一般比較低樓層的內部面積稍大。

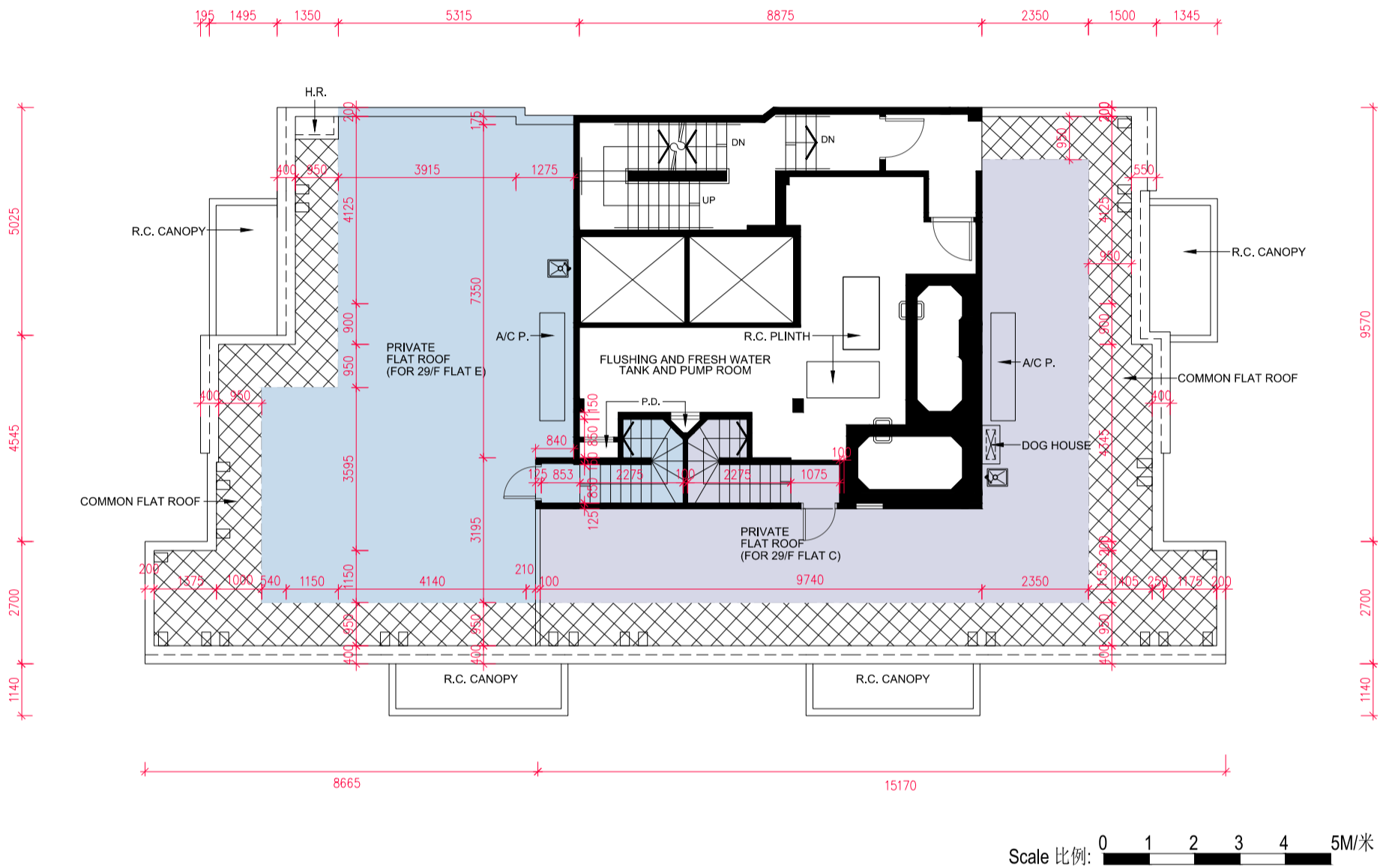
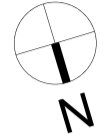
Notes:

備註:

- Please refer to page 21 of this Sales Brochure for legend of terms and abbreviations shown in the floor plans.
- *Denotes that the slab thickness includes 300mm and 400mm thick concrete fill.

- 平面圖中所使用之名詞及簡稱請參閱本售樓說明書第21頁。
- *標示該樓板的厚度包括300毫米及400毫米的混凝土填料。

ROOF PLAN
天台平面圖



Notes:

1. Please refer to page 21 of this Sales Brochure for legend of terms and abbreviations shown in the floor plans.
2. The description "Private Flat Roof" shown on the roof plan is, in fact, the "Roof" forming parts of the relevant residential properties on 29/F. Please refer to the "Floor Plans of Residential Properties in the Development" section for details.

備註:

1. 平面圖中所使用之名詞及簡稱請參閱本售樓說明書第21頁。
2. 天台平面圖所顯示的「私人平台」，實際上是構成二十九樓相關住宅物業部份的「天台」。詳情請參閱「發展項目中的住宅物業的樓面平面圖」一節。