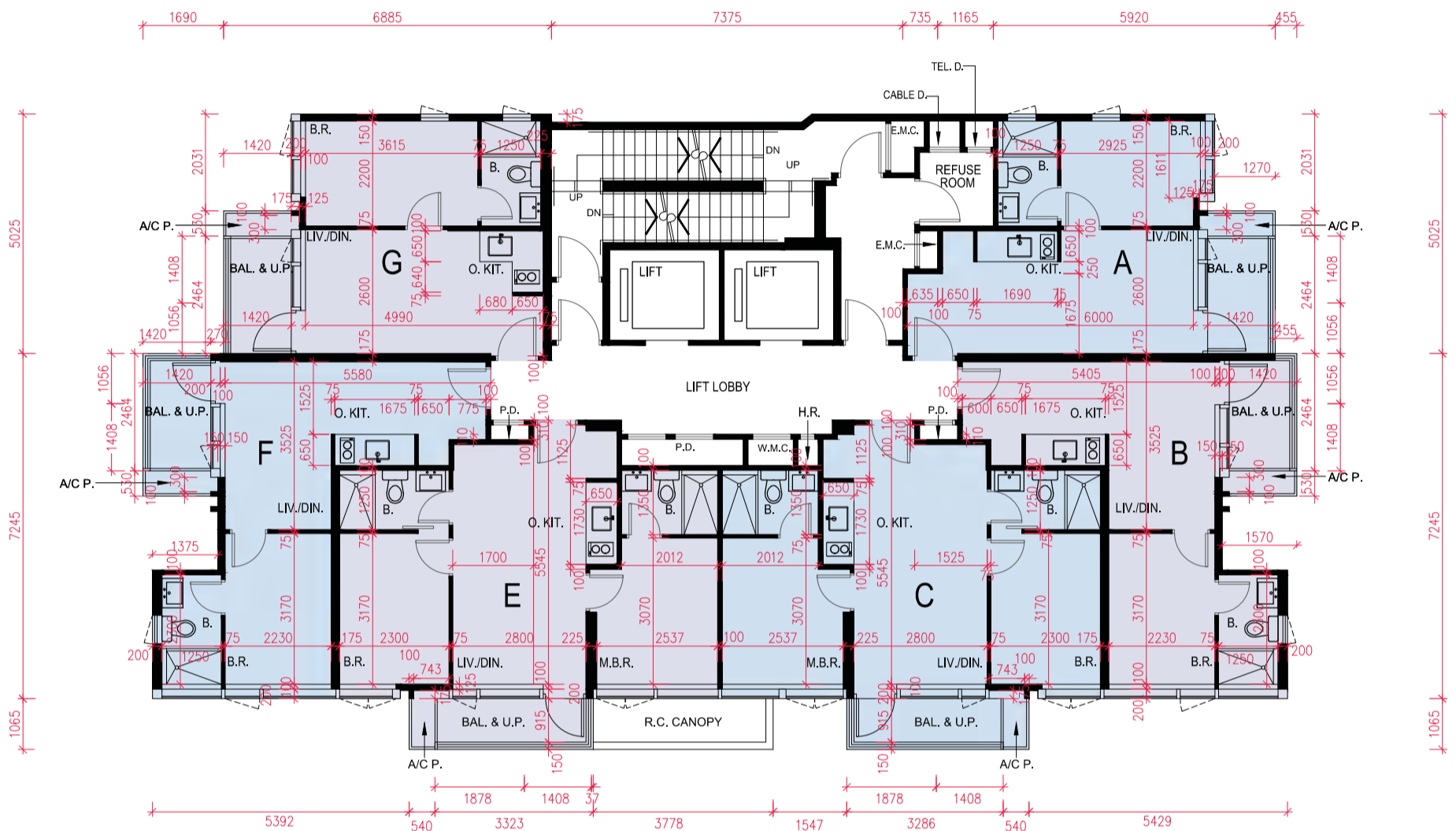


27/F - 28/F FLOOR PLAN

二十七樓至二十八樓樓面平面圖



Scale 比例: 0 1 2 3 4 5M/米

Each Residential Property 每個住宅物業	Floor 樓層	Unit 單位					
		A	B	C	E	F	G
Floor-to-Floor Height (mm) 層與層之間的高度 (毫米)	二十七樓 27/F	3150	3150	3075, 3150	3075, 3150	3150	3150
	二十八樓 28/F	3150	3025, 3150, 3350	3150, 3475	3150, 3475	3025, 3150, 3350	3150
Thickness of Floor Slabs (excluding plaster) (mm) 樓板(不包括灰泥)的厚度 (毫米)	二十七樓 27/F	150	150	150	150	150	150
	二十八樓 28/F	150	150	150	150	150	150

The internal areas of the residential properties on the upper floors will generally be slightly larger than those on the lower floors because of the reducing thickness of the structural walls on the upper floors.

因住宅物業的較高樓層的結構牆的厚度遞減，較高樓層的內部面積，一般比較低樓層的內部面積稍大。

Notes:

- Please refer to page 21 of this Sales Brochure for legend of terms and abbreviations shown in the floor plans.
- \*Denotes that the slab thickness includes 300mm and 400mm thick concrete fill.

備註:

- 平面圖中所使用之名詞及簡稱請參閱本售樓說明書第21頁。
- \*標示該樓板的厚度包括300毫米及400毫米的混凝土填料。