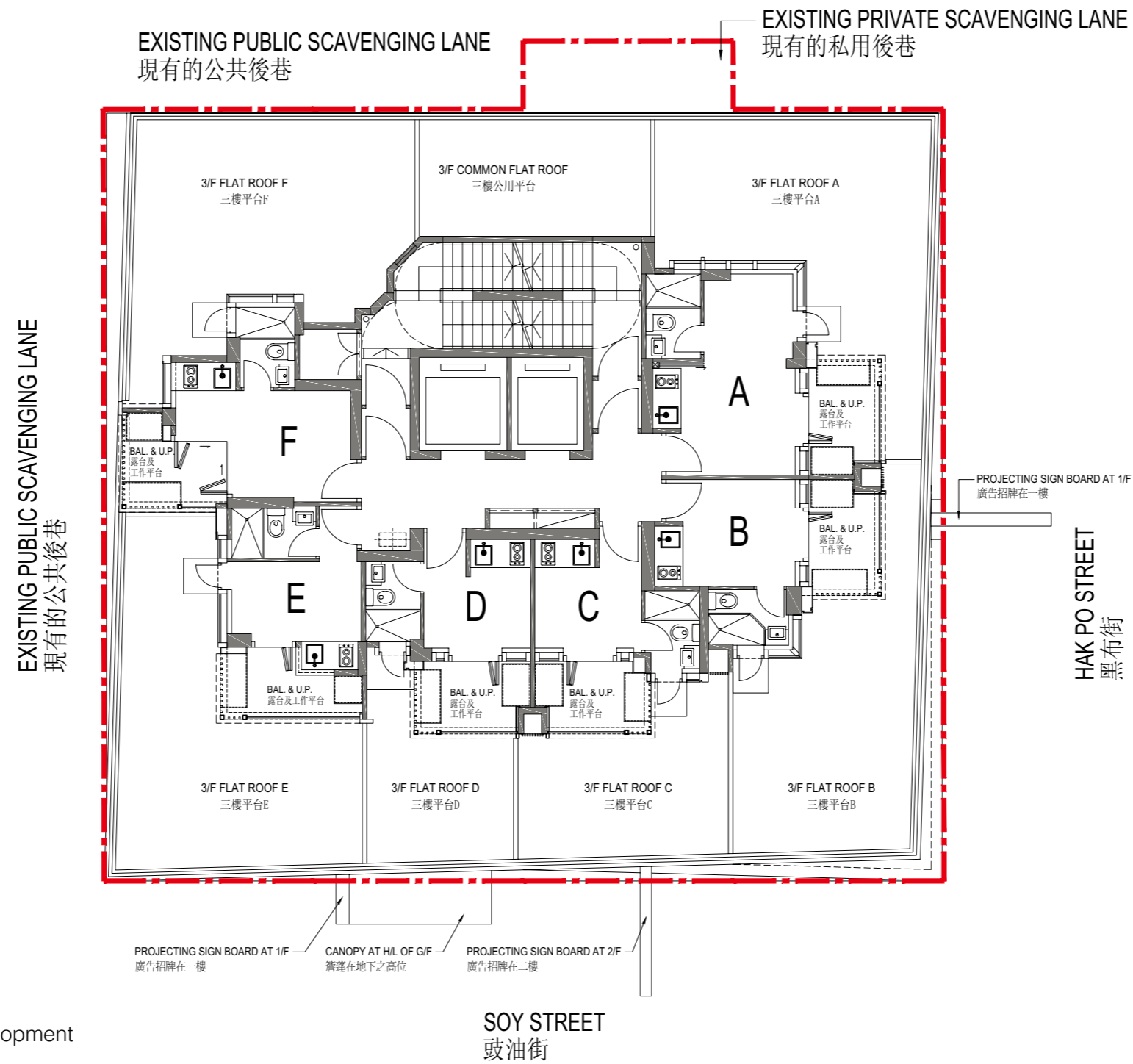


10 LAYOUT PLAN OF THE DEVELOPMENT

發展項目的布局圖



--- Boundary line of the Development
發展項目的地界線

BAL. & U.P. = Balcony and Utility Platform = 露台及工作平台
H/L = High level = 高位

The estimated date of completion of the building and facilities, as provided by the Authorized Person for the Development: 31 March, 2024
該發展項目的認可人士提供的該等建築物及設施的預計落成日期：2024年3月31日

Note:
The layout of the residential properties in the Development shown in this plan is prepared based on the floor plan of residential properties in the Development applicable to 3/F.

備註：
圖中所示之發展項目住宅物業布局是參照用於三樓的住宅物業平面圖製作而成。