

FLOOR PLANS OF RESIDENTIAL PROPERTIES IN THE DEVELOPMENT

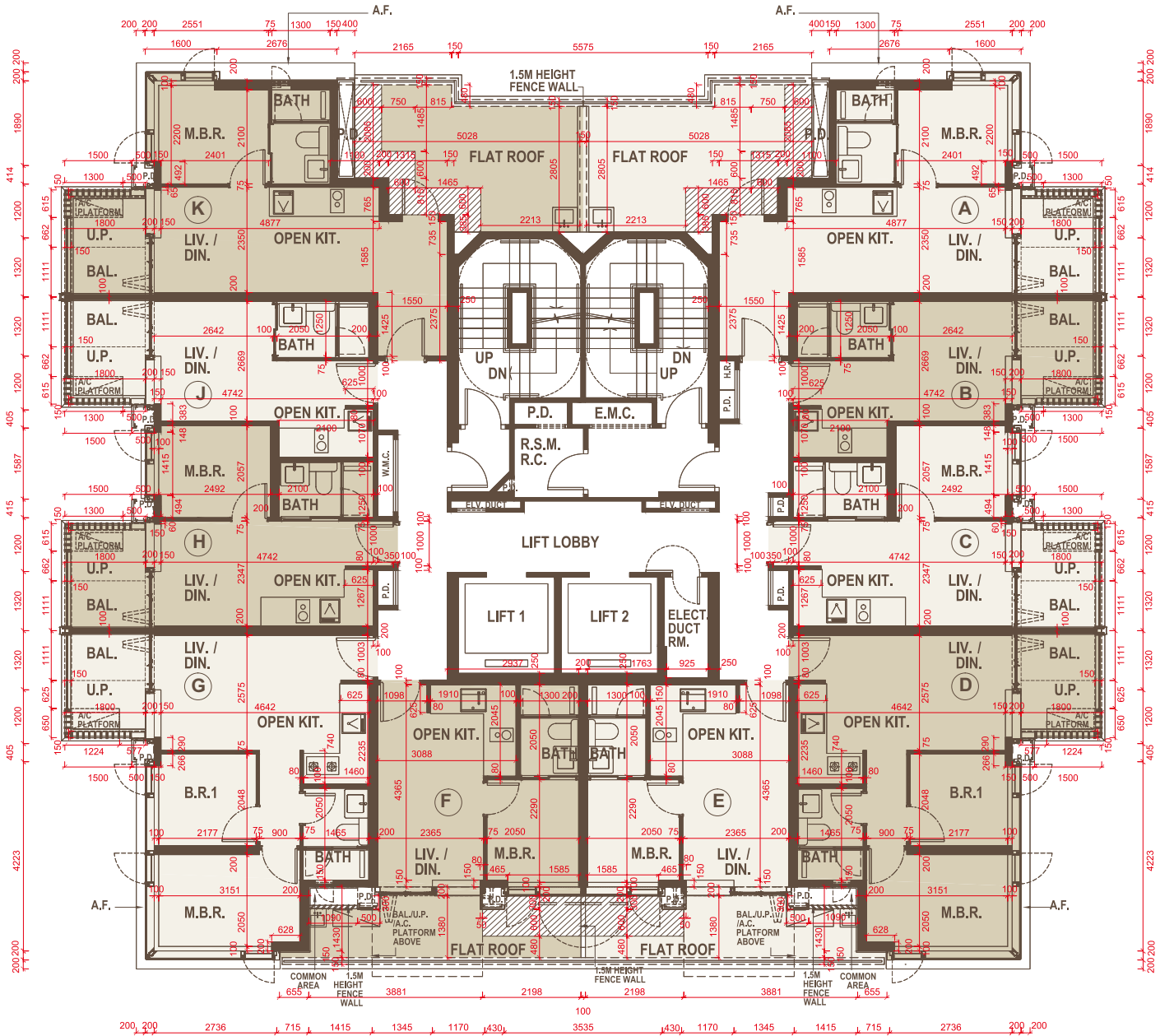
發展項目的住宅物業的樓面平面圖

5/F FLOOR PLAN 5樓平面圖

LEGEND 圖例

 Access to access opening for operating CCTV imaging device for drainage inspection as common parts
通道通往供操作閉路電視影像儀器用的渠管檢修口，為公用部份。

 Denotes window swing 示意窗擺



SCALE 比例 0 1 2 3 4 6 8M/米

Remarks:

1. There are architectural features, metal grilles and / or exposed pipes on the external walls of some of the floors. For details, please refer to the latest approved building plans.
2. Common pipes exposed and / or enclosed in cladding are located at / adjacent to the balcony, utility platform and air-conditioner platform and / or floor at flat roof. For details, please refer to the latest approved building plans and / or approved drainage plans.
3. There are sunken slabs (for mechanical & electrical services of units above) and / or ceiling bulkheads for the air-conditioning fittings and / or mechanical & electrical services at some residential units.
4. There are exposed pipes installed in some bathrooms.
5. Balconies and utility platforms are non-enclosed areas.
6. The indications of fittings such as sinks, hobs, toilet bowls, wash basins, bath tubs etc. shown on the floor plans are indications of their approximate locations only and not indications of their actual size, designs and shapes.
7. The dimensions in the floor plans are all structural dimensions in millimeter.
8. Please refer to the first page of this section for legends of all terms and abbreviations shown in the floor plans.

備註:

1. 部分樓層外牆範圍設有建築裝飾、金屬格柵及 / 或外露喉管，詳細資料請參考最新批准的建築圖則。
2. 部分住宅單位的露台，工作平台及冷氣機平台，及 / 或外牆裝飾板，及 / 或平台內藏之公用喉管，詳細資料請參考最新批准的建築圖則及 / 或排水設施圖。
3. 部分住宅單位天花有跌級樓板（用以安裝樓上單位之機電設備）及 / 或假天花內裝置空調裝備及 / 或其他機電設備。
4. 部分浴室內裝有外露喉管。
5. 露台及工作平台為不可封閉的地方。
6. 平面圖所示之裝置如洗滌盤、煮食爐、坐廁、面盆、浴缸等只供展示其大約位置而非展示其實際大小、設計及形狀。
7. 樓面平面圖所列之尺寸數字為以毫米標示之建築結構尺寸。
8. 關於樓面平面圖上顯示之名詞及簡稱，請參閱本部份的首頁。