

FLOOR PLANS OF RESIDENTIAL PROPERTIES IN THE DEVELOPMENT

發展項目的住宅物業的樓面平面圖

HOUSE 2 2號獨立屋

Floor-to-floor height of LG/F (mm): 3500/4400/4700/4737/4950

Thickness of the floor slabs excluding plaster of LG/F (mm): 175/250

Floor-to-floor height refers to the height between the top surface of the structural slab of a floor and the top surface of the structural slab of its immediate upper floor

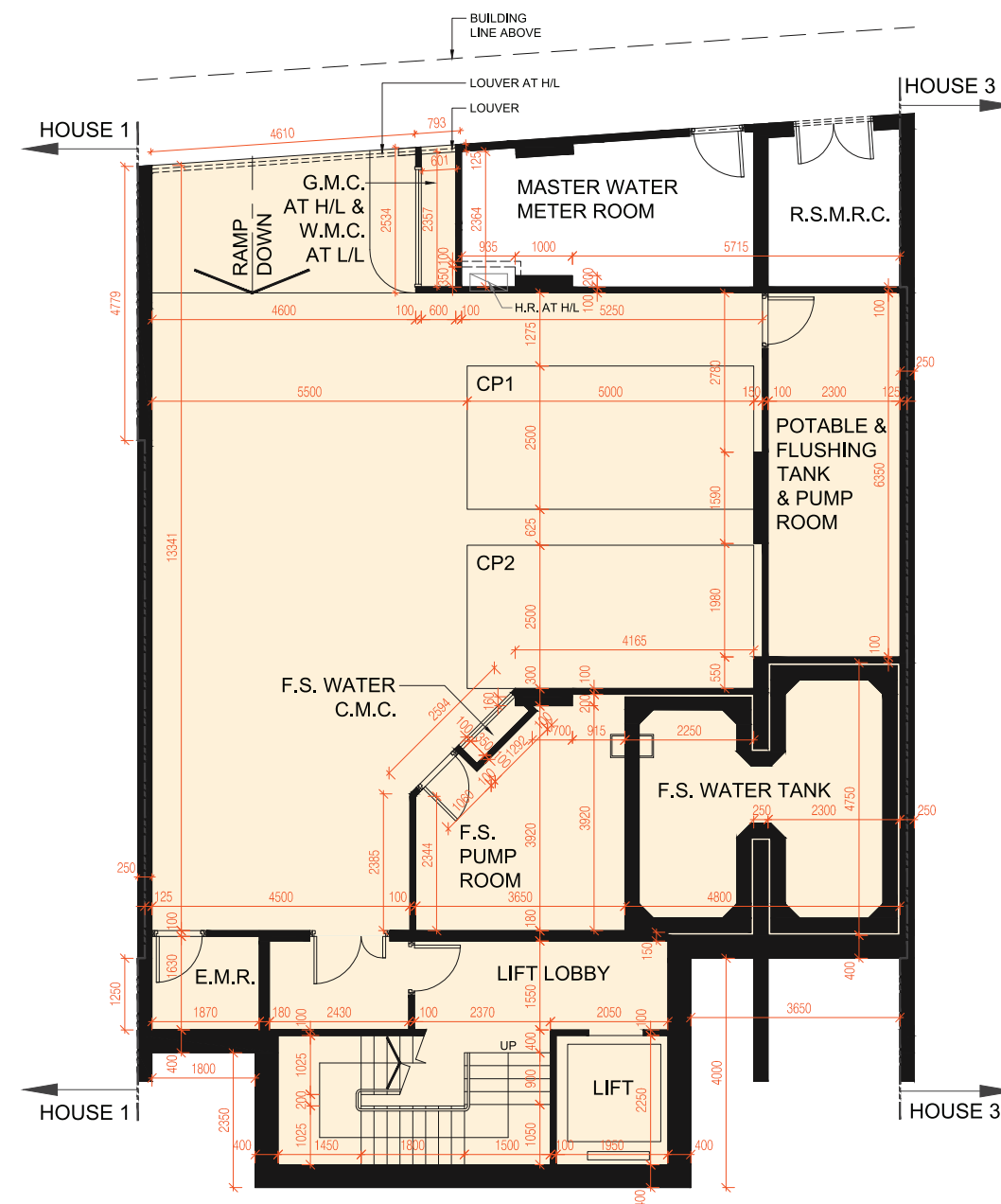
低層地下 — 層與層之間的高度 (毫米) : 3500/4400/4700/4737/4950

低層地下 — 樓板(不包括灰泥)的厚度 (毫米) : 175/250

層與層之間的高度指該樓層之石屎地台面與上一層石屎地台面之高度距離

The internal areas of the residential properties on the upper floors will generally be slightly larger than those on the lower floors because of the reducing thickness of the structural walls on the upper floors.

因住宅物業的較高樓層的結構牆的厚度遞減，較高樓層的內部面積，一般比較低樓層的內部面積稍大。



0 10 METRES(米)

SCALE 比例

Notes :

1. The dimensions in floor plans are all structural dimensions in millimeter.
2. Please refer to page 20 of this sales brochure for the legends of the terms and abbreviations for the floor plans of residential properties.

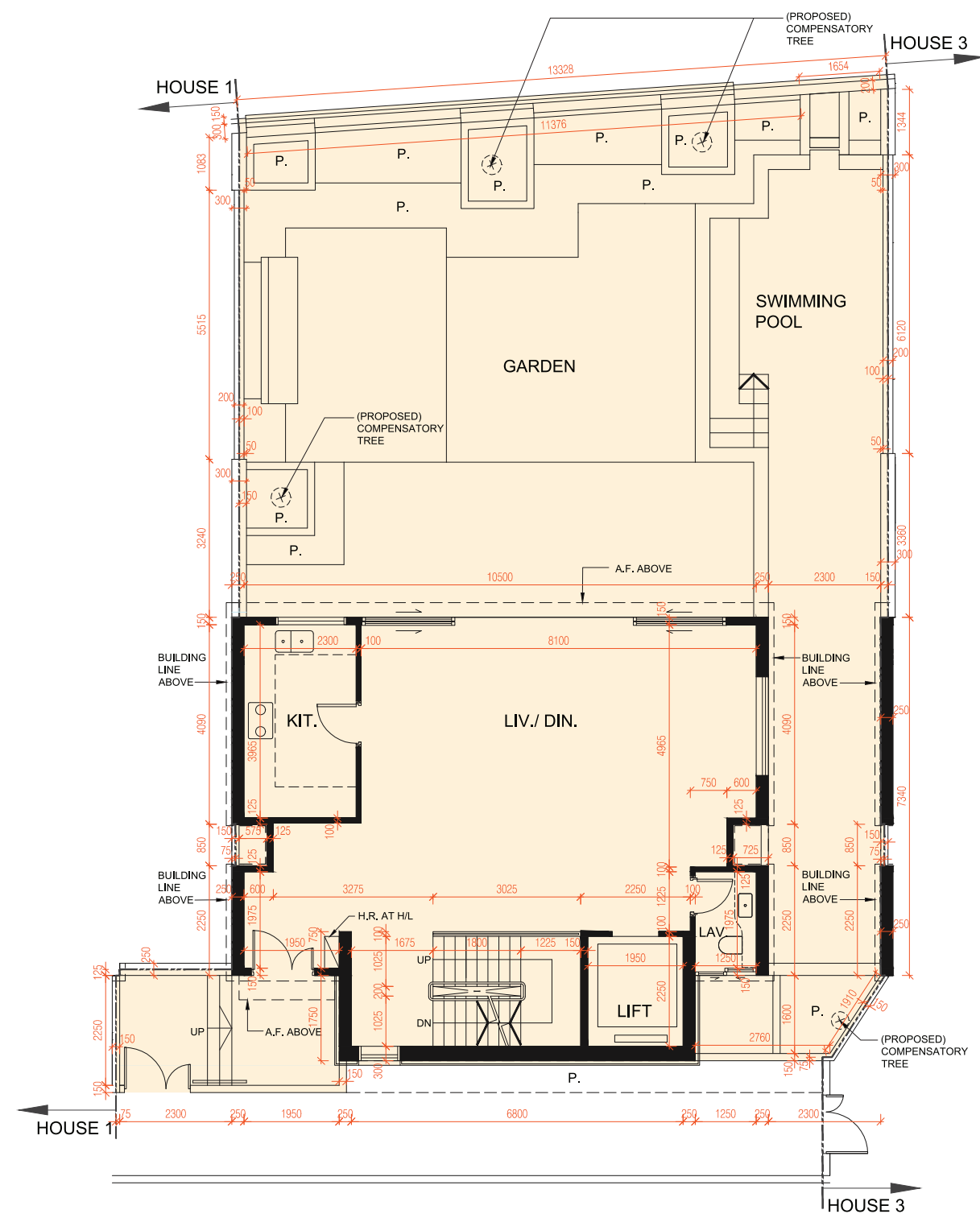
備註 :

1. 平面圖所列的數字為以毫米標示之建築結構尺寸。
2. 請參閱本售樓說明書第20頁為住宅物業樓面平面圖而設之名詞及簡稱的圖例。

LOWER GROUND FLOOR PLAN 低層地下平面圖

FLOOR PLANS OF RESIDENTIAL PROPERTIES IN THE DEVELOPMENT

發展項目的住宅物業的樓面平面圖



HOUSE 2

2號獨立屋

Floor-to-floor height of G/F (mm): 4500
Thickness of the floor slabs excluding plaster of G/F (mm): 175/200
Floor-to-floor height refers to the height between the top surface of the structural slab of a floor and the top surface of the structural slab of its immediate upper floor

地下 — 層與層之間的高度 (毫米) : 4500
地下 — 樓板(不包括灰泥)的厚度 (毫米) : 175/200
層與層之間的高度指該樓層之石屎地台面與上一層石屎地台面之高度距離

The internal areas of the residential properties on the upper floors will generally be slightly larger than those on the lower floors because of the reducing thickness of the structural walls on the upper floors.
因住宅物業的較高樓層的結構牆的厚度遞減，較高樓層的內部面積，一般比較低樓層的內部面積稍大。



- Notes :
1. The dimensions in floor plans are all structural dimensions in millimeter.
 2. Please refer to page 20 of this sales brochure for the legends of the terms and abbreviations for the floor plans of residential properties.

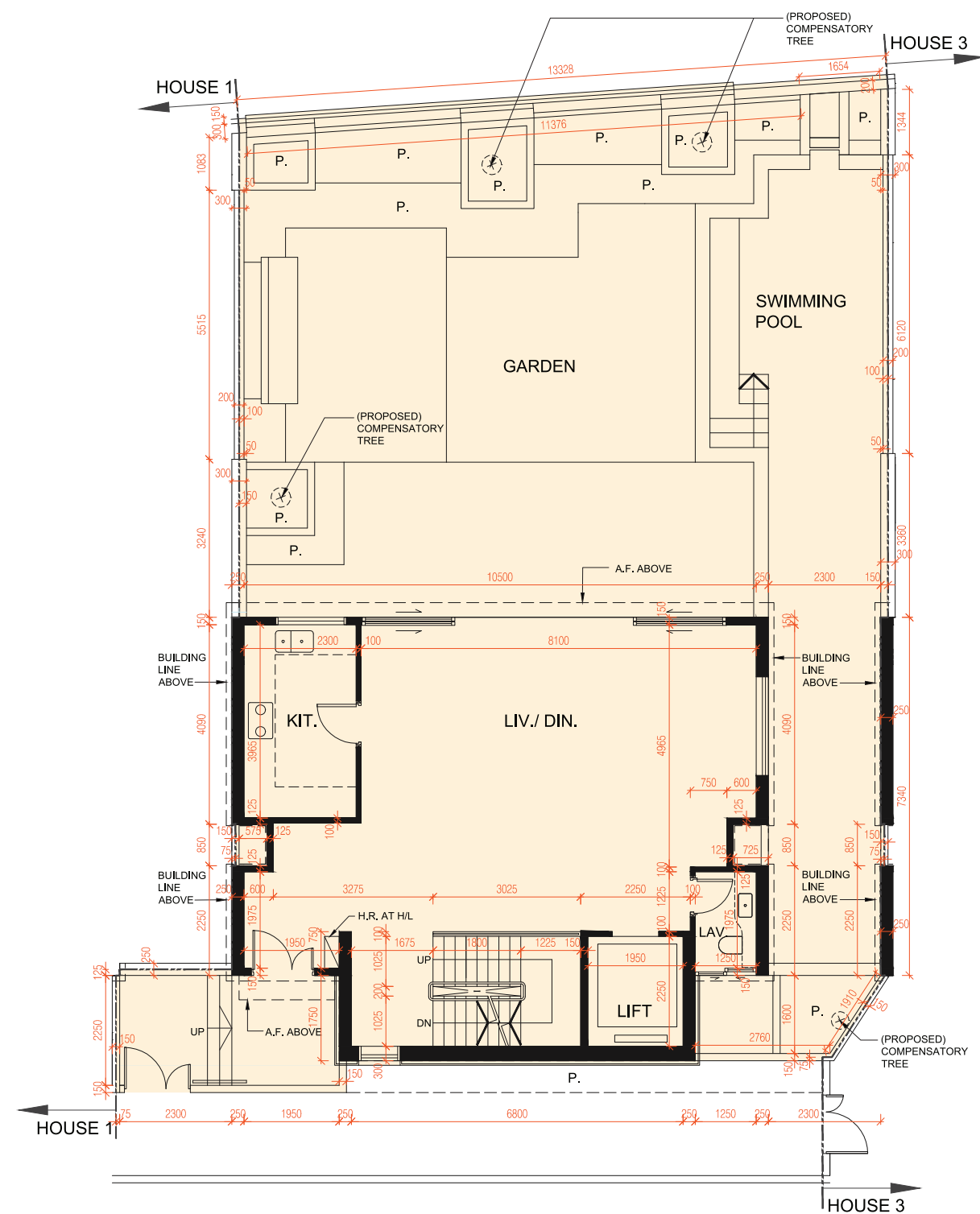
- 備註 :
1. 平面圖所列的數字為以毫米標示之建築結構尺寸。
 2. 請參閱本售樓說明書第20頁為住宅物業樓面平面圖而設之名詞及簡稱的圖例。

GROUND FLOOR PLAN

地下平面圖

FLOOR PLANS OF RESIDENTIAL PROPERTIES IN THE DEVELOPMENT

發展項目的住宅物業的樓面平面圖



HOUSE 2

2號獨立屋

Floor-to-floor height of G/F (mm): 4500
Thickness of the floor slabs excluding plaster of G/F (mm): 175/200
Floor-to-floor height refers to the height between the top surface of the structural slab of a floor and the top surface of the structural slab of its immediate upper floor

地下 — 層與層之間的高度 (毫米) : 4500
地下 — 樓板(不包括灰泥)的厚度 (毫米) : 175/200
層與層之間的高度指該樓層之石屎地台面與上一層石屎地台面之高度距離

The internal areas of the residential properties on the upper floors will generally be slightly larger than those on the lower floors because of the reducing thickness of the structural walls on the upper floors.
因住宅物業的較高樓層的結構牆的厚度遞減，較高樓層的內部面積，一般比較低樓層的內部面積稍大。



- Notes :
1. The dimensions in floor plans are all structural dimensions in millimeter.
 2. Please refer to page 20 of this sales brochure for the legends of the terms and abbreviations for the floor plans of residential properties.

- 備註 :
1. 平面圖所列的數字為以毫米標示之建築結構尺寸。
 2. 請參閱本售樓說明書第20頁為住宅物業樓面平面圖而設之名詞及簡稱的圖例。

GROUND FLOOR PLAN

地下平面圖

FLOOR PLANS OF RESIDENTIAL PROPERTIES IN THE DEVELOPMENT

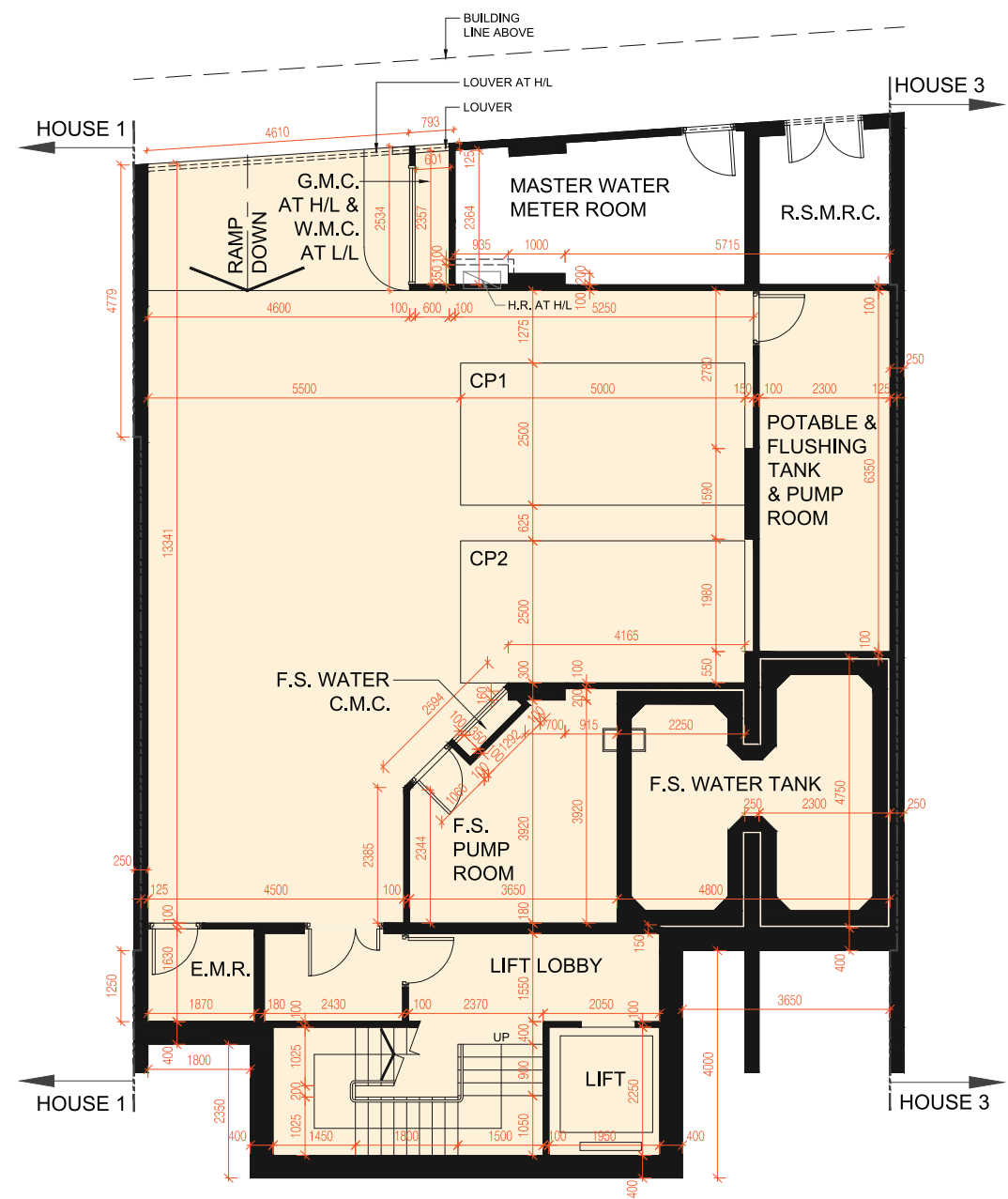
發展項目的住宅物業的樓面平面圖

HOUSE 2 2號獨立屋

Floor-to-floor height of LG/F (mm): 3500/4400/4700/4737/4950
Thickness of the floor slabs excluding plaster of LG/F (mm): 175/250
Floor-to-floor height refers to the height between the top surface of the structural slab of a floor and the top surface of the structural slab of its immediate upper floor

低層地下 — 層與層之間的高度 (毫米) : 3500/4400/4700/4737/4950
低層地下 — 樓板(不包括灰泥)的厚度 (毫米) : 175/250
層與層之間的高度指該樓層之石屎地台面與上一層石屎地台面之高度距離

The internal areas of the residential properties on the upper floors will generally be slightly larger than those on the lower floors because of the reducing thickness of the structural walls on the upper floors.
因住宅物業的較高樓層的結構牆的厚度遞減，較高樓層的內部面積，一般比較低樓層的內部面積稍大。



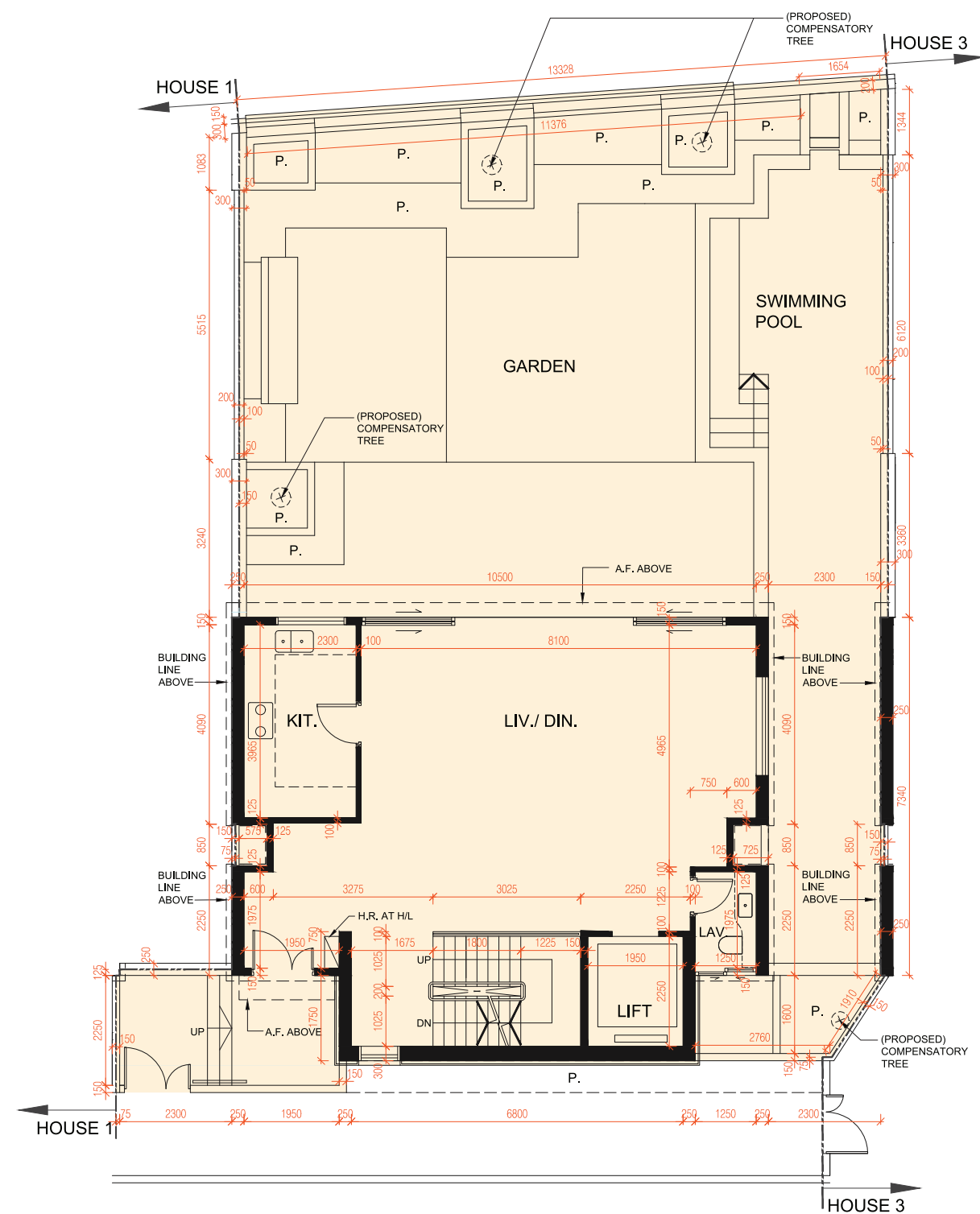
- Notes :
- The dimensions in floor plans are all structural dimensions in millimeter.
 - Please refer to page 20 of this sales brochure for the legends of the terms and abbreviations for the floor plans of residential properties.

- 備註 :
- 平面圖所列的數字為以毫米標示之建築結構尺寸。
 - 請參閱本售樓說明書第20頁為住宅物業樓面平面圖而設之名詞及簡稱的圖例。

LOWER GROUND FLOOR PLAN 低層地下平面圖

FLOOR PLANS OF RESIDENTIAL PROPERTIES IN THE DEVELOPMENT

發展項目的住宅物業的樓面平面圖



HOUSE 2

2號獨立屋

Floor-to-floor height of G/F (mm): 4500

Thickness of the floor slabs excluding plaster of G/F (mm): 175/200

Floor-to-floor height refers to the height between the top surface of the structural slab of a floor and the top surface of the structural slab of its immediate upper floor

地下 — 層與層之間的高度 (毫米) : 4500

地下 — 樓板(不包括灰泥)的厚度 (毫米) : 175/200

層與層之間的高度指該樓層之石屎地台面與上一層石屎地台面之高度距離

The internal areas of the residential properties on the upper floors will generally be slightly larger than those on the lower floors because of the reducing thickness of the structural walls on the upper floors.

因住宅物業的較高樓層的結構牆的厚度遞減，較高樓層的內部面積，一般比較低樓層的內部面積稍大。



Notes :

1. The dimensions in floor plans are all structural dimensions in millimeter.
2. Please refer to page 20 of this sales brochure for the legends of the terms and abbreviations for the floor plans of residential properties.

備註 :

1. 平面圖所列的數字為以毫米標示之建築結構尺寸。
2. 請參閱本售樓說明書第20頁為住宅物業樓面平面圖而設之名詞及簡稱的圖例。

GROUND FLOOR PLAN

地下平面圖

FLOOR PLANS OF RESIDENTIAL PROPERTIES IN THE DEVELOPMENT

發展項目的住宅物業的樓面平面圖

HOUSE 2

2號獨立屋

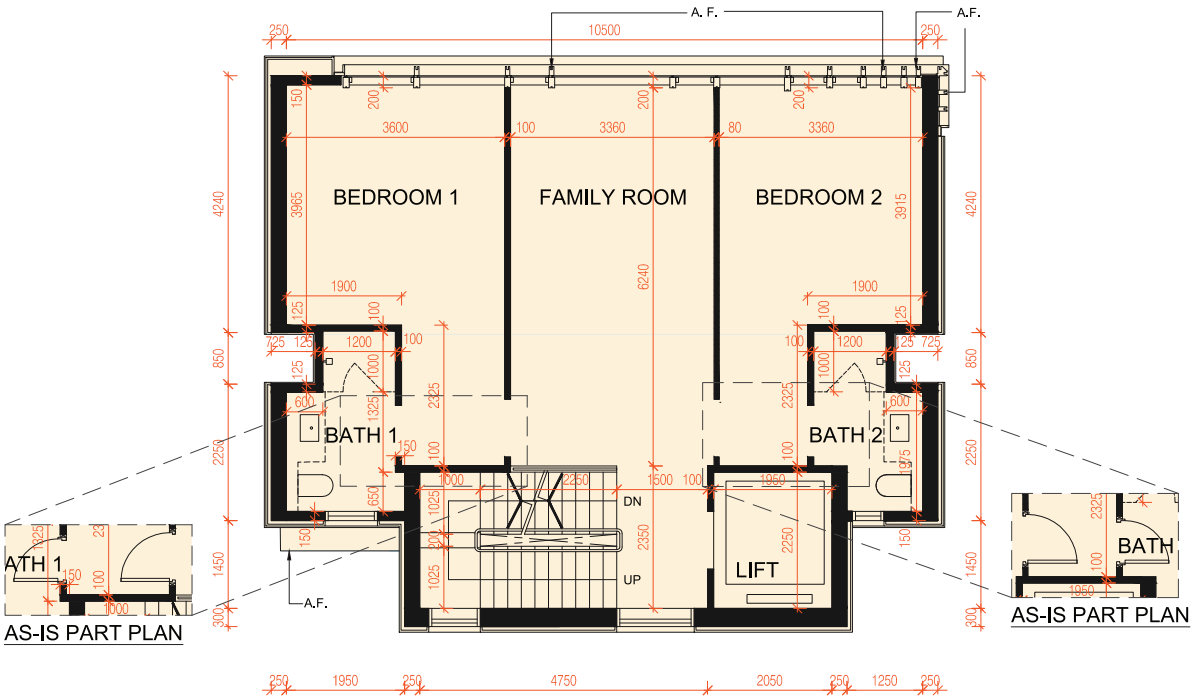
Floor-to-floor height of 1/F (mm): 3500
Floor-to-floor height of 2/F (mm): 3500
Thickness of the floor slabs excluding plaster of 1/F (mm): 175/200
Thickness of the floor slabs excluding plaster of 2/F (mm): 175/250
Floor-to-floor height refers to the height between the top surface of the structural slab of a floor and the top surface of the structural slab of its immediate upper floor

1樓 — 層與層之間的高度 (毫米) : 3500
2樓 — 層與層之間的高度 (毫米) : 3500
1樓 — 樓板(不包括灰泥)的厚度 (毫米) : 175/200
2樓 — 樓板(不包括灰泥)的厚度 (毫米) : 175/250
層與層之間的高度指該樓層之石屎地台面與上一層石屎地台面之高度距離

The internal areas of the residential properties on the upper floors will generally be slightly larger than those on the lower floors because of the reducing thickness of the structural walls on the upper floors.
因住宅物業的較高樓層的結構牆的厚度遞減，較高樓層的內部面積，一般比較低樓層的內部面積稍大。

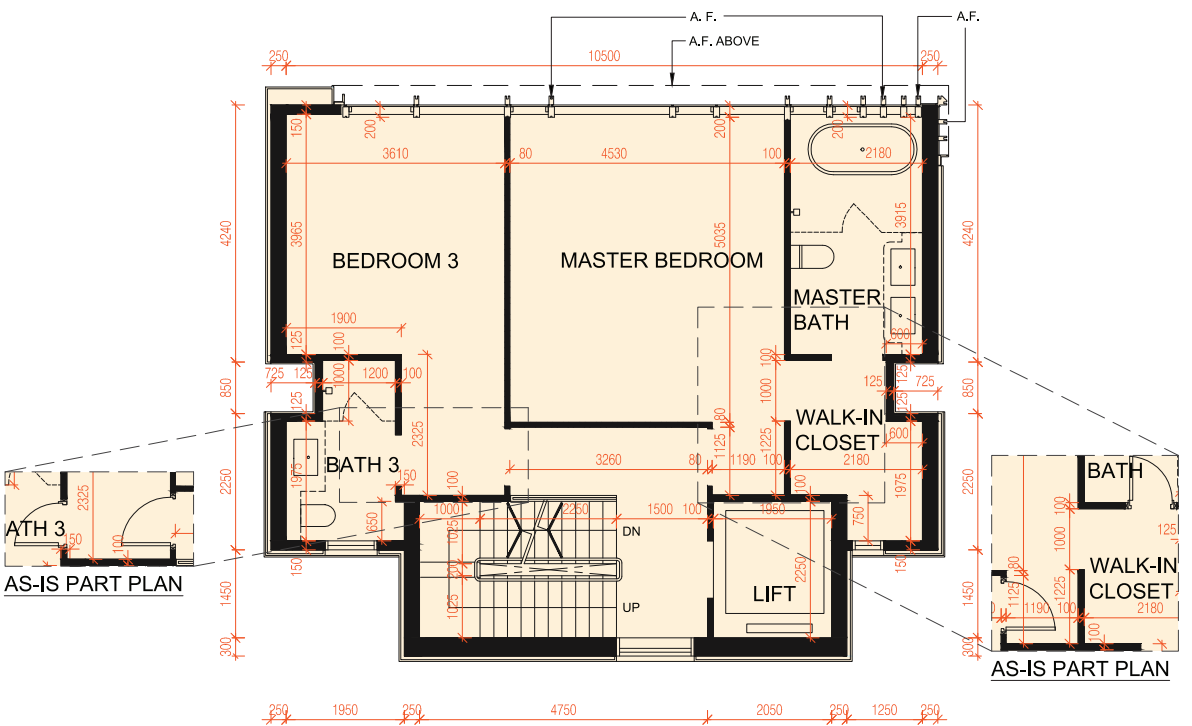
FIRST FLOOR PLAN

1樓平面圖



SECOND FLOOR PLAN

2樓平面圖

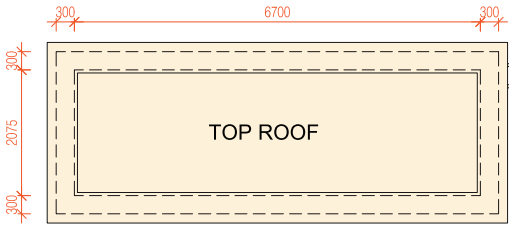


- Notes :
- The dimensions in floor plans are all structural dimensions in millimeter.
 - Please refer to page 20 of this sales brochure for the legends of the terms and abbreviations for the floor plans of residential properties.

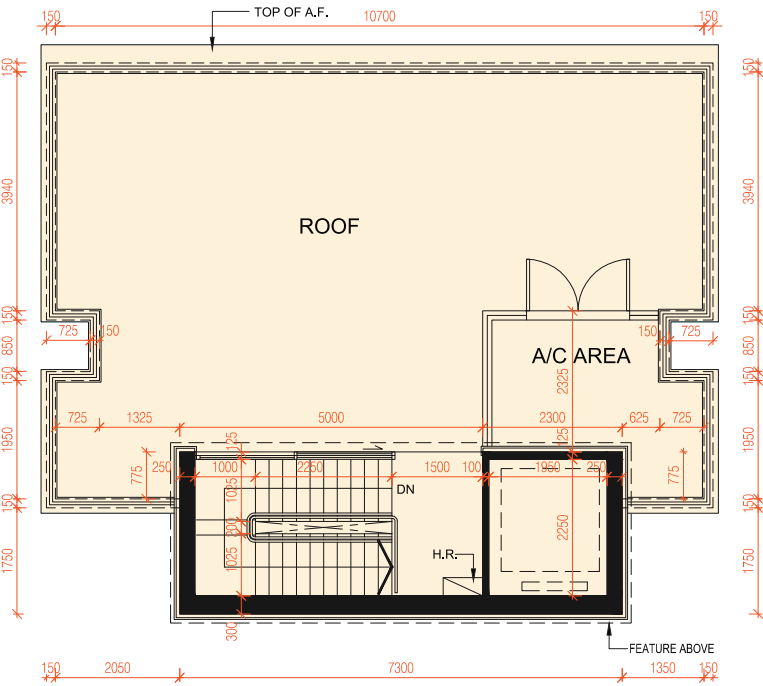
- 備註：
- 平面圖所列的數字為以毫米標示之建築結構尺寸。
 - 請參閱本售樓說明書第20頁為住宅物業樓面平面圖而設之名詞及簡稱的圖例。

FLOOR PLANS OF RESIDENTIAL PROPERTIES IN THE DEVELOPMENT

發展項目的住宅物業的樓面平面圖



TOP ROOF FLOOR PLAN
頂層天台平面圖



ROOF FLOOR PLAN
天台平面圖

HOUSE 2 2號獨立屋

Floor-to-floor height of Roof (Stairhood) (mm): 2550
Thickness of the floor slabs excluding plaster of Roof (Stairhood) (mm): 150
Floor-to-floor height refers to the height between the top surface of the structural slab of a floor and the top surface of the structural slab of its immediate upper floor

天台(梯屋) — 層與層之間的高度 (毫米) : 2550
天台(梯屋) — 樓板(不包括灰泥)的厚度 (毫米) : 150
層與層之間的高度指該樓層之石屎地台面與上一層石屎地台面之高度距離

The internal areas of the residential properties on the upper floors will generally be slightly larger than those on the lower floors because of the reducing thickness of the structural walls on the upper floors.
因住宅物業的較高樓層的結構牆的厚度遞減，較高樓層的內部面積，一般比較低樓層的內部面積稍大。



- Notes :
- 1. The dimensions in floor plans are all structural dimensions in millimeter.
 - 2. Please refer to page 20 of this sales brochure for the legends of the terms and abbreviations for the floor plans of residential properties.

- 備註：
- 1. 平面圖所列的數字為以毫米標示之建築結構尺寸。
 - 2. 請參閱本售樓說明書第20頁為住宅物業樓面平面圖而設之名詞及簡稱的圖例。

FLOOR PLANS OF RESIDENTIAL PROPERTIES IN THE DEVELOPMENT

發展項目的住宅物業的樓面平面圖

HOUSE 2

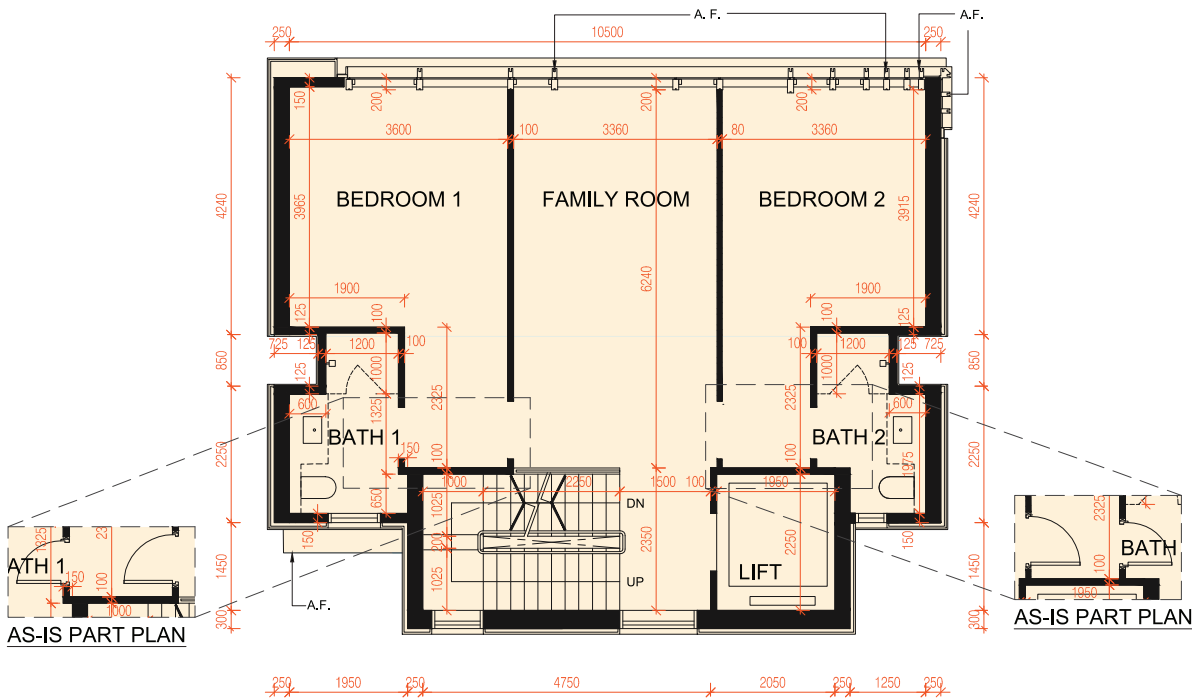
2號獨立屋

Floor-to-floor height of 1/F (mm): 3500
Floor-to-floor height of 2/F (mm): 3500
Thickness of the floor slabs excluding plaster of 1/F (mm): 175/200
Thickness of the floor slabs excluding plaster of 2/F (mm): 175/250
Floor-to-floor height refers to the height between the top surface of the structural slab of a floor and the top surface of the structural slab of its immediate upper floor

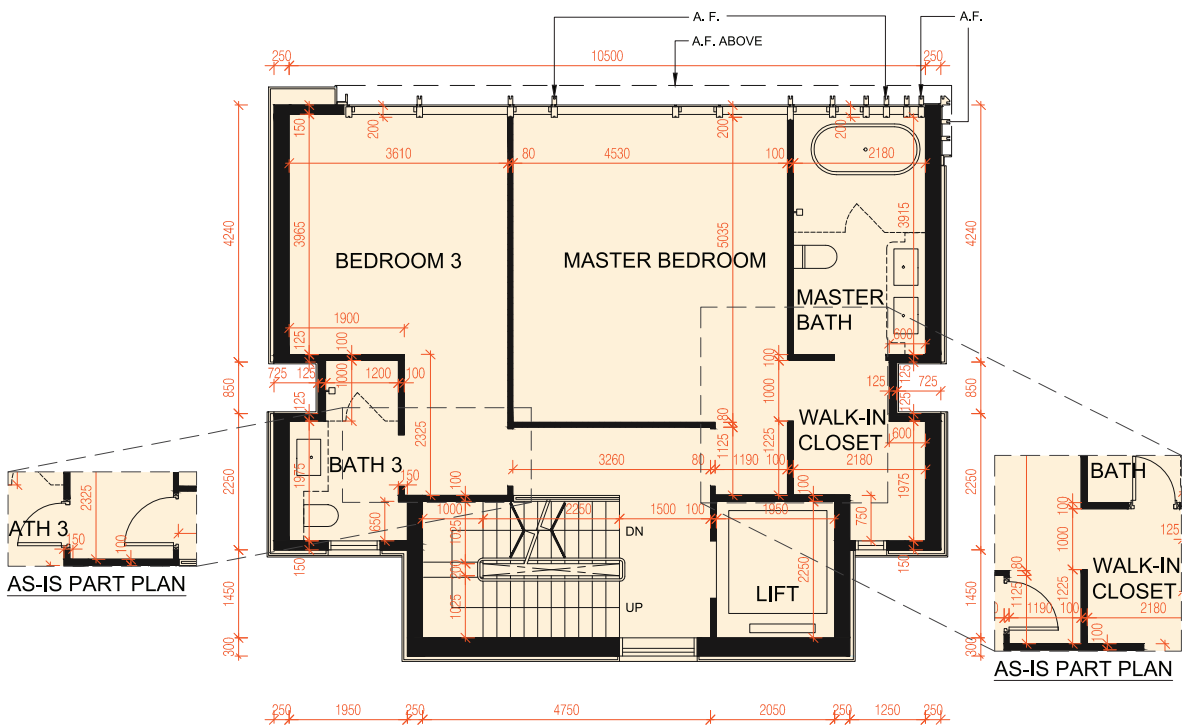
1樓 — 層與層之間的高度 (毫米) : 3500
2樓 — 層與層之間的高度 (毫米) : 3500
1樓 — 樓板(不包括灰泥)的厚度 (毫米) : 175/200
2樓 — 樓板(不包括灰泥)的厚度 (毫米) : 175/250
層與層之間的高度指該樓層之石屎地台面與上一層石屎地台面之高度距離

The internal areas of the residential properties on the upper floors will generally be slightly larger than those on the lower floors because of the reducing thickness of the structural walls on the upper floors.
因住宅物業的較高樓層的結構牆的厚度遞減，較高樓層的內部面積，一般比較低樓層的內部面積稍大。

FIRST FLOOR PLAN
1樓平面圖



SECOND FLOOR PLAN
2樓平面圖

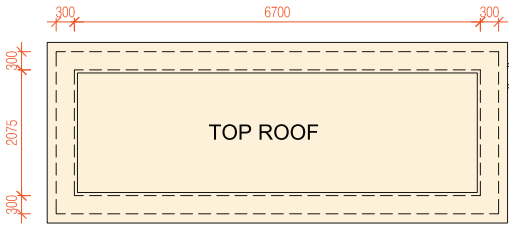


- Notes :
- The dimensions in floor plans are all structural dimensions in millimeter.
 - Please refer to page 20 of this sales brochure for the legends of the terms and abbreviations for the floor plans of residential properties.

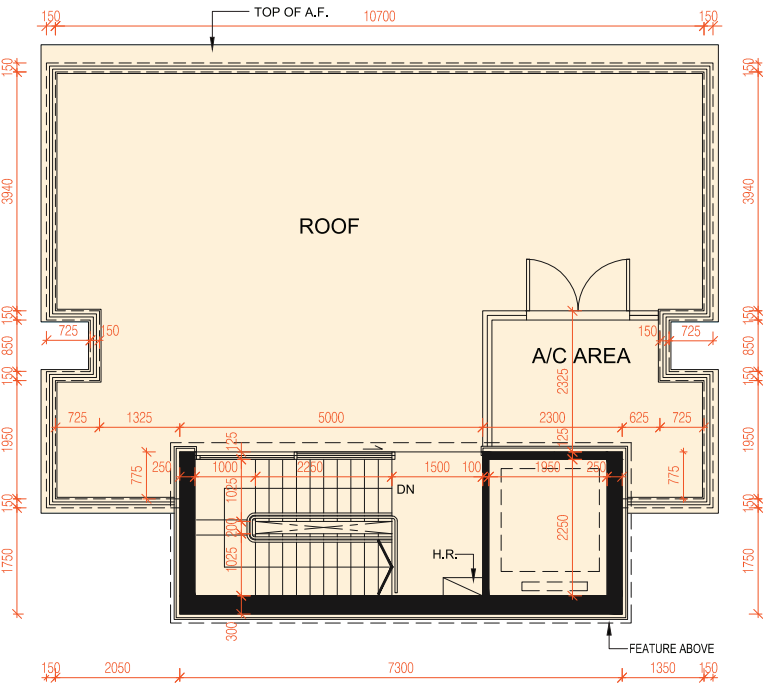
- 備註：
- 平面圖所列的數字為以毫米標示之建築結構尺寸。
 - 請參閱本售樓說明書第20頁為住宅物業樓面平面圖而設之名詞及簡稱的圖例。

FLOOR PLANS OF RESIDENTIAL PROPERTIES IN THE DEVELOPMENT

發展項目的住宅物業的樓面平面圖



TOP ROOF FLOOR PLAN
頂層天台平面圖



ROOF FLOOR PLAN
天台平面圖

HOUSE 2 2號獨立屋

Floor-to-floor height of Roof (Stairhood) (mm): 2550
Thickness of the floor slabs excluding plaster of Roof (Stairhood) (mm): 150
Floor-to-floor height refers to the height between the top surface of the structural slab of a floor and the top surface of the structural slab of its immediate upper floor

天台(梯屋) — 層與層之間的高度 (毫米) : 2550
天台(梯屋) — 樓板(不包括灰泥)的厚度 (毫米) : 150
層與層之間的高度指該樓層之石屎地台面與上一層石屎地台面之高度距離

The internal areas of the residential properties on the upper floors will generally be slightly larger than those on the lower floors because of the reducing thickness of the structural walls on the upper floors.
因住宅物業的較高樓層的結構牆的厚度遞減，較高樓層的內部面積，一般比較低樓層的內部面積稍大。



- Notes :
- 1. The dimensions in floor plans are all structural dimensions in millimeter.
 - 2. Please refer to page 20 of this sales brochure for the legends of the terms and abbreviations for the floor plans of residential properties.

- 備註：
- 1. 平面圖所列的數字為以毫米標示之建築結構尺寸。
 - 2. 請參閱本售樓說明書第20頁為住宅物業樓面平面圖而設之名詞及簡稱的圖例。