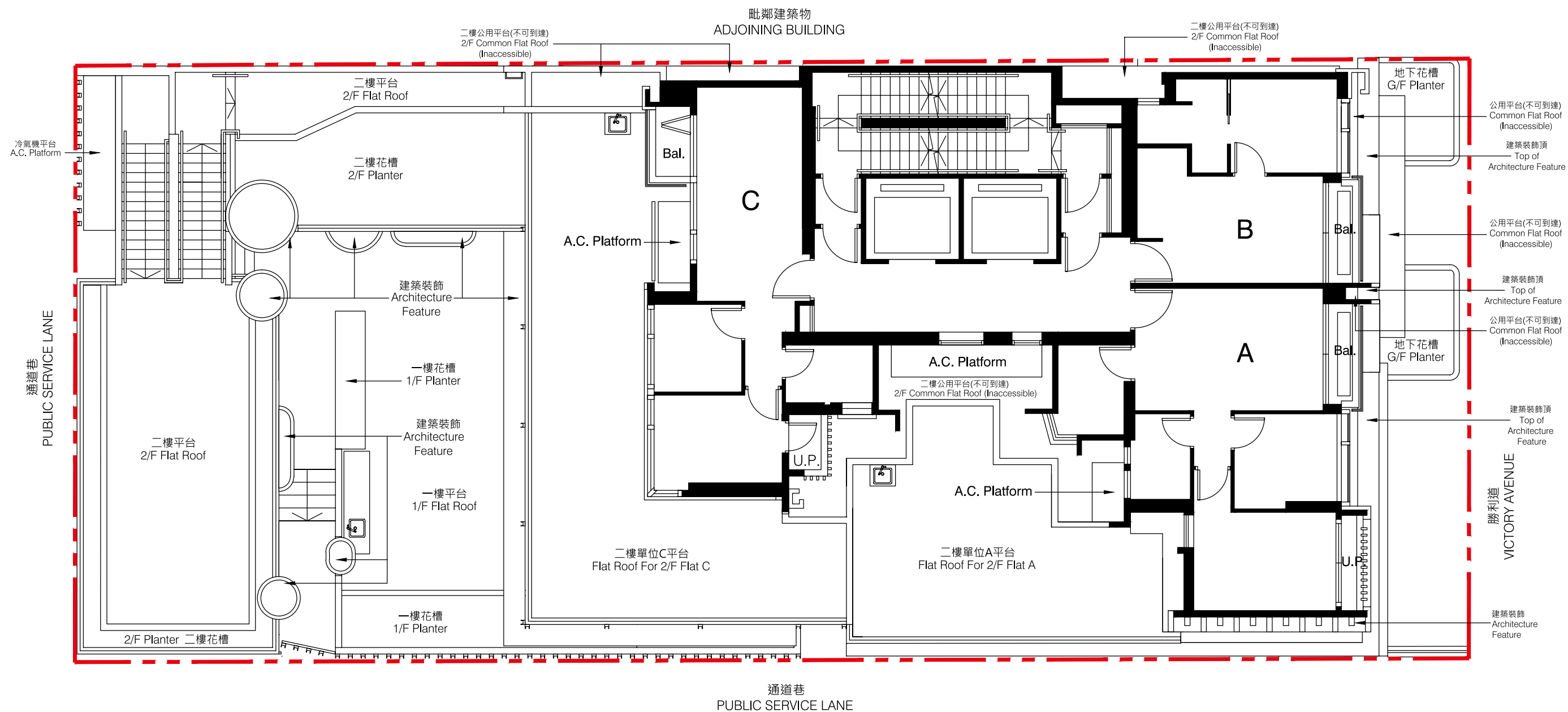


10 LAYOUT PLAN OF THE DEVELOPMENT 發展項目的布局圖



Scale比例尺

0

5M(米)



Boundary line of the Development
發展項目的地界線

A.C. Platform = Air-conditioner Platform 冷氣機平台
Bal. = Balcony 露台
U.P. = Utility Platform 工作平台

The estimated date of completion of the building and facilities, as provided by the Authorized Person for the Development: 30th September 2022
該發展項目的認可人士提供的該等建築物或設施預計落成日期：2022年9月30日

Note:

The layout of the residential properties in the Development shown in this plan is prepared based on the floor plan of residential properties in the Development applicable to 3/F.

備註:

圖中所示之發展項目住宅物業布局是參照用於3樓的住宅物業平面圖製作而成。