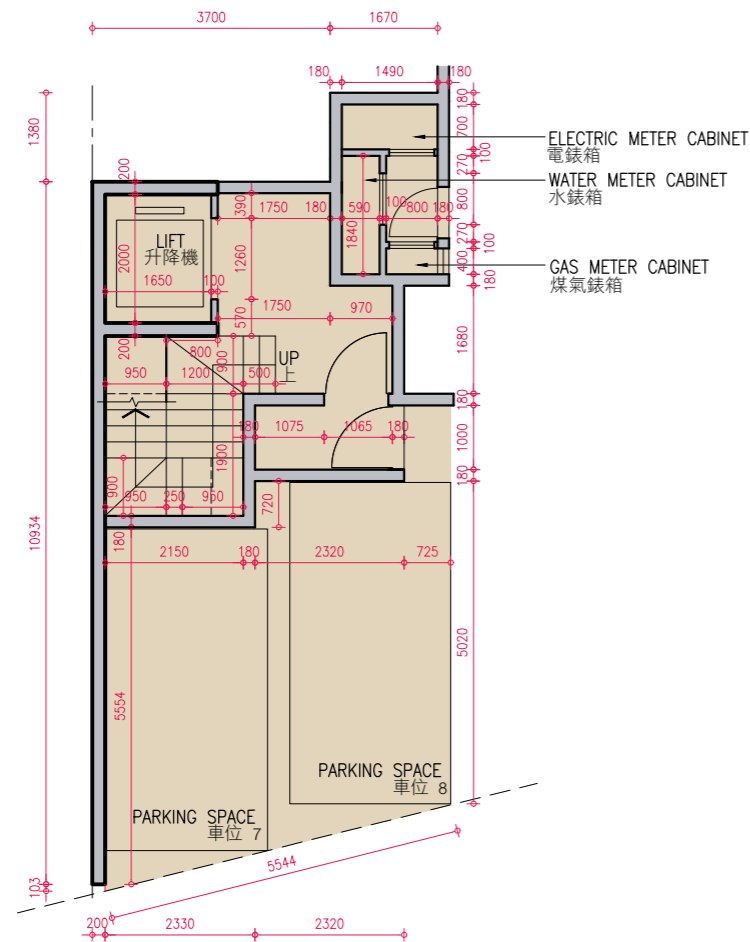


## 5號洋房地下低層平面圖

## HOUSE 5 LOWER GROUND FLOOR PLAN

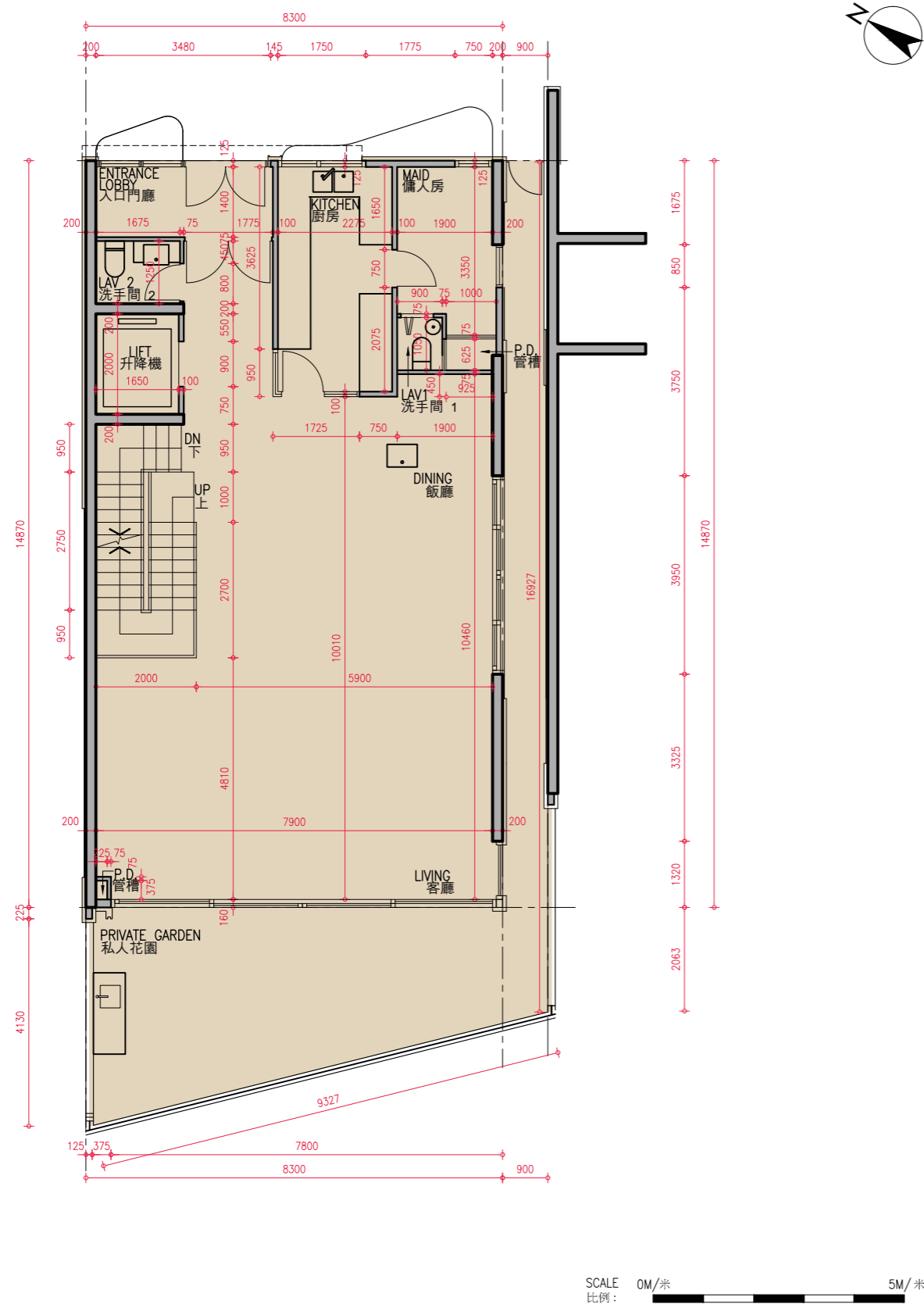


5 號洋房 House 5	地下低層 Lower Ground Floor
樓板( 不包括灰泥) 的厚度( 毫米) The thickness of the floor slabs (excluding plaster) (mm)	200, 225, 300
層與層之間的高度( 指該樓層之石屎地台面與上一層石屎地台面之高度距離) ( 毫米) The floor-to-floor height (i.e. the height between the top surface of the structural slab of a floor and the top surface of the structural slab of its immediate upper floor) (mm)	4100

- 備註：
1. 因住宅物業的較高樓層的結構牆的厚度遞減，較高樓層的內部面積，一般比較低樓層的內部面積稍大。
  2. 平面圖所列之尺寸數字以毫米標示之建築結構尺寸，並以2019年9月16日經屋宇署批准的建築圖則為基礎。
  3. 以上平面圖中顯示之名詞及簡稱請參閱本售樓說明書第20頁。
- Notes :
1. The internal areas of the residential properties on the upper floors will generally be slightly larger than those on the lower floors because of the reducing thickness of the structural walls on the upper floors.
  2. The dimensions in the floor plans are all structural dimensions in millimeter which were prepared on the basis of General Building Plan approved by the Buildings Department on 16 September 2019.
  3. Please refer to page 20 of this sales brochure for legend of the terms and abbreviation shown on the floor plan above.

SCALE 0M/米 5M/米  
比例：

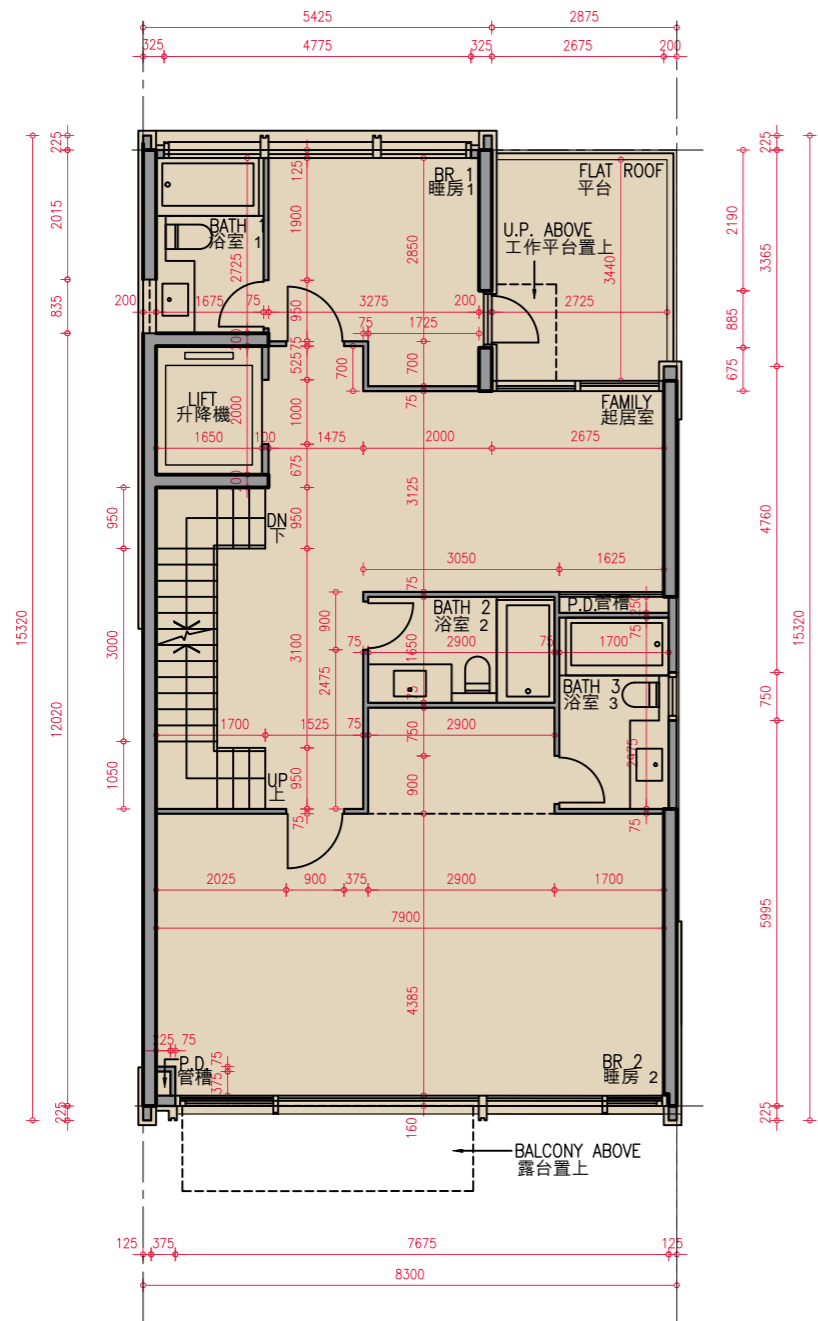
5 號洋房地下平面圖  
HOUSE 5 GROUND FLOOR PLAN



5 號洋房 House 5	地下 Ground Floor
樓板( 不包括灰泥) 的厚度( 毫米) The thickness of the floor slabs (excluding plaster) (mm)	150, 175, 225
層與層之間的高度( 指該樓層之石屎地台面與上一層石屎地台面之高度距離) ( 毫米) The floor-to-floor height (i.e. the height between the top surface of the structural slab of a floor and the top surface of the structural slab of its immediate upper floor) (mm)	4200

- 備註:
- 因住宅物業的較高樓層的結構牆的厚度遞減，較高樓層的內部面積，一般比較低樓層的內部面積稍大。
  - 平面圖所列之尺寸數字以毫米標示之建築結構尺寸，並以2019年9月16日經屋宇署批准的建築圖則為基礎。
  - 以上平面圖中顯示之名詞及簡稱請參閱本售樓說明書第20頁。
- Notes :
- The internal areas of the residential properties on the upper floors will generally be slightly larger than those on the lower floors because of the reducing thickness of the structural walls on the upper floors.
  - The dimensions in the floor plans are all structural dimensions in millimeter which were prepared on the basis of General Building Plan approved by the Buildings Department on 16 September 2019.
  - Please refer to page 20 of this sales brochure for legend of the terms and abbreviation shown on the floor plan above.

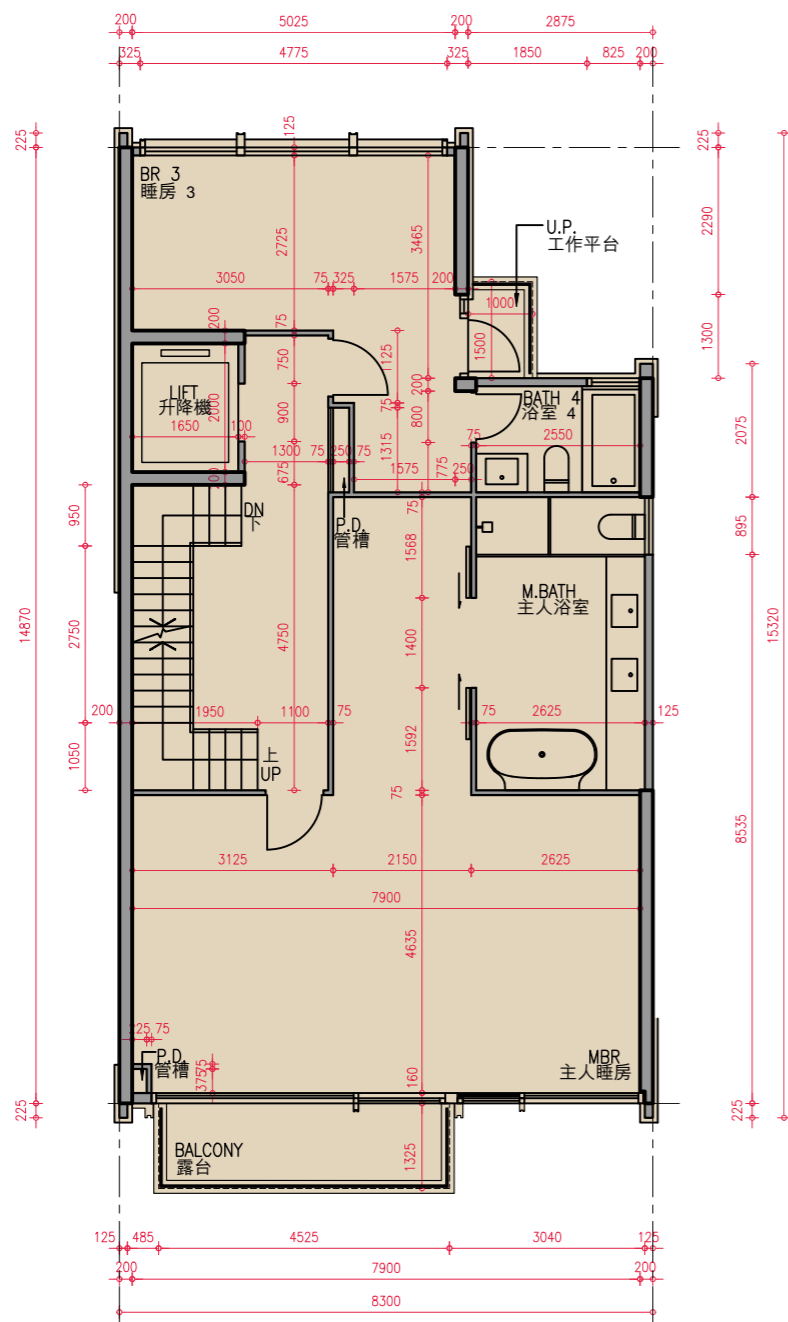
5號洋房1樓平面圖  
HOUSE 5 FIRST FLOOR PLAN



5 號洋房 House 5	1樓 First Floor
樓板( 不包括灰泥) 的厚度( 毫米) The thickness of the floor slabs (excluding plaster) (mm)	150, 175, 225
層與層之間的高度( 指該樓層之石屎地台面與上一層石屎地台面之高度距離) ( 毫米) The floor-to-floor height (i.e. the height between the top surface of the structural slab of a floor and the top surface of the structural slab of its immediate upper floor) (mm)	3500

- 備註:
1. 因住宅物業的較高樓層的結構牆的厚度遞減，較高樓層的內部面積，一般比較低樓層的內部面積稍大。
  2. 平面圖所列之尺寸數字以毫米標示之建築結構尺寸，並以2019 年9 月16 日經屋宇署批准的建築圖則為基礎。
  3. 以上平面圖中顯示之名詞及簡稱請參閱本售樓說明書第20 頁。
- Notes :
1. The internal areas of the residential properties on the upper floors will generally be slightly larger than those on the lower floors because of the reducing thickness of the structural walls on the upper floors.
  2. The dimensions in the floor plans are all structural dimensions in millimeter which were prepared on the basis of General Building Plan approved by the Buildings Department on 16 September 2019.
  3. Please refer to page 20 of this sales brochure for legend of the terms and abbreviation shown on the floor plan above.

5 號洋房2樓平面圖  
HOUSE 5 SECOND FLOOR PLAN

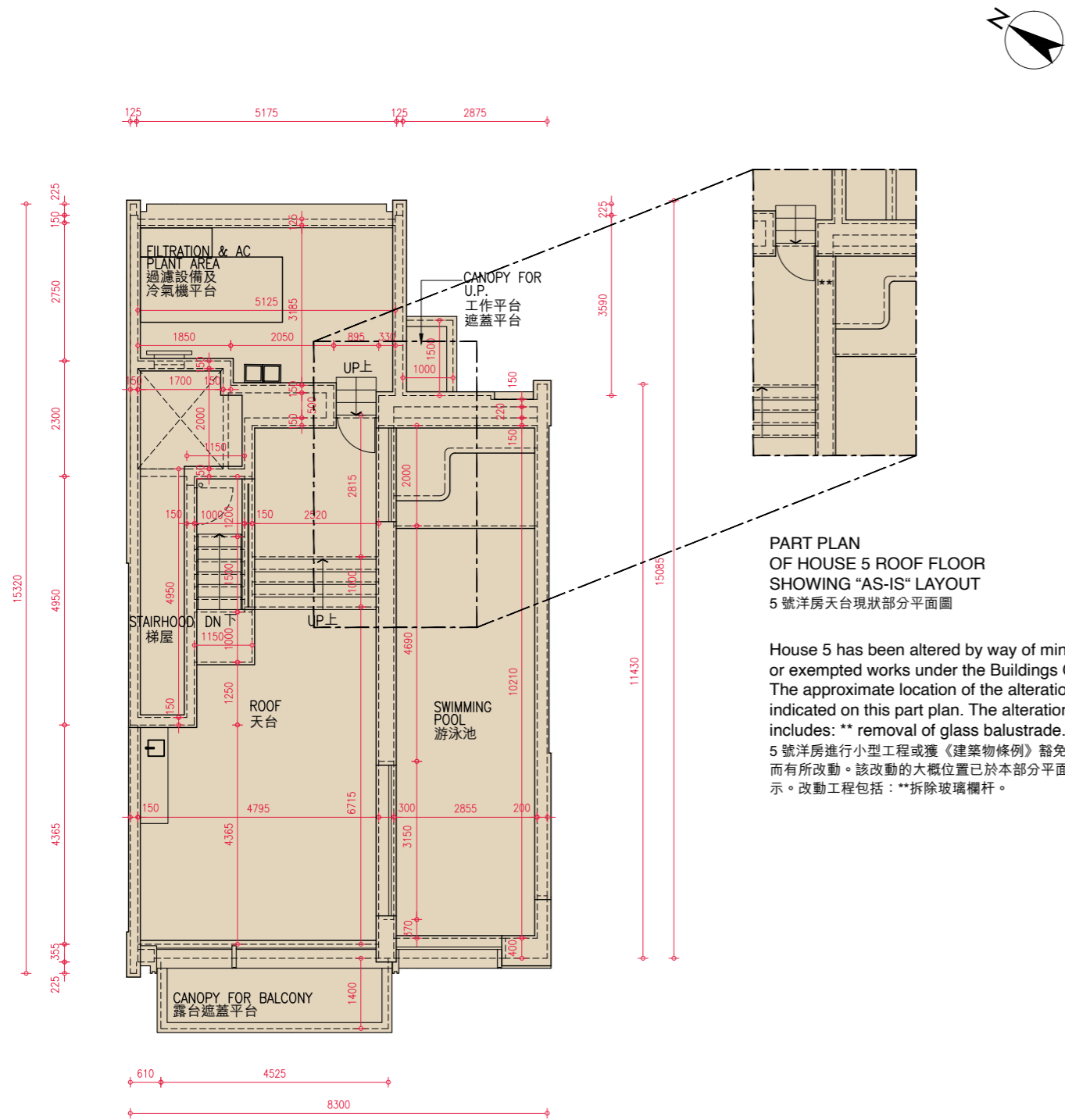


5 號洋房 House 5	2樓 Second Floor
樓板( 不包括灰泥) 的厚度( 毫米) The thickness of the floor slabs (excluding plaster) (mm)	150, 175, 225, 250, 300
層與層之間的高度( 指該樓層之石屎地台面與上一層石屎地台面之高度距離) ( 毫米) The floor-to-floor height (i.e. the height between the top surface of the structural slab of a floor and the top surface of the structural slab of its immediate upper floor) (mm)	3500, 3750, 4450

- 備註：
1. 因住宅物業的較高樓層的結構牆的厚度遞減，較高樓層的內部面積，一般比較低樓層的內部面積稍大。
  2. 平面圖所列之尺寸數字以毫米標示之建築結構尺寸，並以2019 年9 月16 日經屋宇署批准的建築圖則為基礎。
  3. 以上平面圖中顯示之名詞及簡稱請參閱本售樓說明書第20 頁。
- Notes :
1. The internal areas of the residential properties on the upper floors will generally be slightly larger than those on the lower floors because of the reducing thickness of the structural walls on the upper floors.
  2. The dimensions in the floor plans are all structural dimensions in millimeter which were prepared on the basis of General Building Plan approved by the Buildings Department on 16 September 2019.
  3. Please refer to page 20 of this sales brochure for legend of the terms and abbreviation shown on the floor plan above.

SCALE 0M/米 5M/米  
比例：

5 號洋房天台平面圖  
HOUSE 5 ROOF FLOOR PLAN



PART PLAN OF HOUSE 5 ROOF FLOOR SHOWING "AS-IS" LAYOUT  
5 號洋房天台現狀部分平面圖

House 5 has been altered by way of minor works or exempted works under the Buildings Ordinance. The approximate location of the alteration is indicated on this part plan. The alteration work includes: \*\* removal of glass balustrade.  
5 號洋房進行小型工程或獲《建築物條例》豁免的工程而有所改動。該改動的大概位置已於本部分平面圖中作標示。改動工程包括：\*\*拆除玻璃欄杆。

5 號洋房 House 5	天台 Roof
樓板( 不包括灰泥) 的厚度( 毫米) The thickness of the floor slabs (excluding plaster) (mm)	不適用 N.A.
層與層之間的高度( 指該樓層之石屎地台面與上一層石屎地台面之高度距離) ( 毫米) The floor-to-floor height (i.e. the height between the top surface of the structural slab of a floor and the top surface of the structural slab of its immediate upper floor) (mm)	不適用 N.A.

- 備註:
- 1. 因住宅物業的較高樓層的結構牆的厚度遞減，較高樓層的內部面積，一般比較低樓層的內部面積稍大。
  - 2. 平面圖所列之尺寸數字以毫米標示之建築結構尺寸，並以2019年9月16日經屋宇署批准的建築圖則為基礎。
  - 3. 以上平面圖中顯示之名詞及簡稱請參閱本售樓說明書第20頁。
- Notes :
- 1. The internal areas of the residential properties on the upper floors will generally be slightly larger than those on the lower floors because of the reducing thickness of the structural walls on the upper floors.
  - 2. The dimensions in the floor plans are all structural dimensions in millimeter which were prepared on the basis of General Building Plan approved by the Buildings Department on 16 September 2019.
  - 3. Please refer to page 20 of this sales brochure for legend of the terms and abbreviation shown on the floor plan above.

SCALE 0M/米 5M/米  
比例: