

# 御海灣II Regency Bay II

以上單位訂價圖由28HSE製作

製作日期：2021年04月15日

資料來源：新盤網頁(御海灣II Regency Bay II)

以上單位訂價圖由28HSE製作

製作日期：2021年04月15日

資料來源：新盤網頁(御海灣II Regency Bay II)

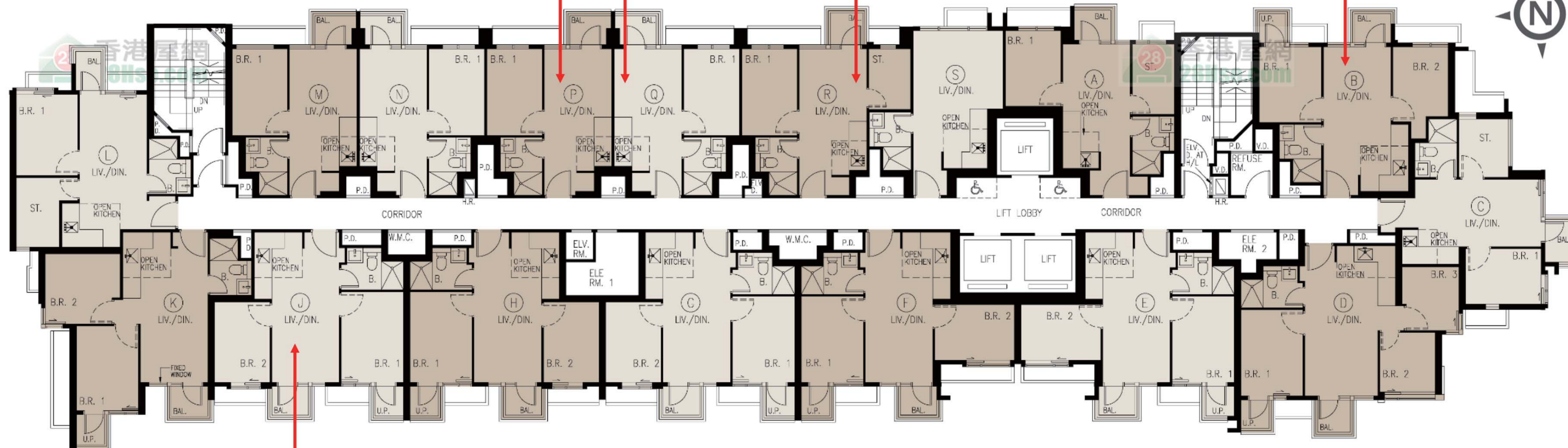
J		
訂價	即供價(9%)	
2房 433'		
29	\$10,604,700	\$9,650,277
	@\$24,491	@\$22,287
27	\$10,493,600	\$9,549,176
	@\$24,235	@\$22,054
26	\$10,438,100	\$9,498,671
	@\$24,106	@\$21,937
25	\$10,382,600	\$9,448,166
	@\$23,978	@\$21,820
23	\$10,327,100	\$9,397,661
	@\$23,850	@\$21,704
22	\$10,271,600	\$9,347,156
	@\$23,722	@\$21,587
21	\$10,216,100	\$9,296,651
	@\$23,594	@\$21,470
20	\$10,160,600	\$9,246,146
	@\$23,466	@\$21,354
19	\$10,132,900	\$9,220,939
	@\$23,402	@\$21,295
18	\$10,130,000	\$9,218,300
	@\$23,395	@\$21,289
17	\$10,105,000	\$9,195,550
	@\$23,337	@\$21,237
16	\$10,091,200	\$9,182,992
	@\$23,305	@\$21,208
15	\$10,077,400	\$9,170,434
	@\$23,273	@\$21,179
12	\$10,063,500	\$9,157,785
	@\$23,241	@\$21,150
11	\$10,049,500	\$9,145,045
	@\$23,209	@\$21,120
10	\$10,033,000	\$9,130,030
	@\$23,171	@\$21,086
9	\$10,016,300	\$9,114,833
	@\$23,132	@\$21,050
8	\$10,010,700	\$9,109,737
	@\$23,119	@\$21,039
7	\$9,983,000	\$9,084,530
	@\$23,055	@\$20,980
6	\$9,966,300	\$9,069,333
	@\$23,017	@\$20,945
5	\$9,949,700	\$9,054,227
	@\$22,979	@\$20,910

P		
訂價	即供價(9%)	
1房 299'		
19	\$7,778,000	\$7,077,980
	@\$26,013	@\$23,672
18	\$7,770,300	\$7,070,973
	@\$25,988	@\$23,649
17	\$7,747,200	\$7,049,952
	@\$25,910	@\$23,578
16	\$7,732,000	\$7,036,120
	@\$25,860	@\$23,532
15	\$7,716,600	\$7,022,106
	@\$25,808	@\$23,485
12	\$7,692,400	\$7,000,084
	@\$25,727	@\$23,412
11	\$7,685,900	\$6,994,169
	@\$25,705	@\$23,392

Q		
訂價	即供價(9%)	
1房 299'		
21	\$7,812,500	\$7,109,375
	@\$26,129	@\$23,777
20	\$7,785,600	\$7,084,896
	@\$26,039	@\$23,695
19	\$7,778,000	\$7,077,980
	@\$26,013	@\$23,672
18	\$7,770,300	\$7,070,973
	@\$25,988	@\$23,649
17	\$7,747,200	\$7,049,952
	@\$25,910	@\$23,578
16	\$7,732,000	\$7,036,120
	@\$25,860	@\$23,532
15	\$7,716,600	\$7,022,106
	@\$25,808	@\$23,485
12	\$7,692,400	\$7,000,084
	@\$25,727	@\$23,412
11	\$7,685,900	\$6,994,169
	@\$25,705	@\$23,392
10	\$7,624,700	\$6,938,477
	@\$25,501	@\$23,206
9	\$7,563,300	\$6,882,603
	@\$25,295	@\$23,019
8	\$7,509,700	\$6,833,827
	@\$24,116	@\$22,856
7	\$7,440,600	\$6,770,946
	@\$24,885	@\$22,645
6	\$7,379,300	\$6,715,163
	@\$24,680	@\$22,459
5	\$7,318,000	\$6,659,380
	@\$24,475	@\$22,272
3	\$7,279,500	\$6,624,345
	@\$24,346	@\$22,155

R		
訂價	即供價(9%)	
1房連多用途房 343'		
27	\$8,813,900	\$8,020,649
	@\$25,697	@\$23,384
26	\$8,778,800	\$7,988,708
	@\$25,594	@\$23,291
25	\$8,743,500	\$7,956,585
	@\$25,491	@\$23,197
23	\$8,708,400	\$7,924,644
	@\$25,389	@\$23,104
22	\$8,673,100	\$7,892,521
	@\$25,286	@\$23,010
21	\$8,638,000	\$7,860,580
	@\$25,184	@\$22,917
20	\$8,602,900	\$7,828,639
	@\$25,081	@\$22,824
19	\$8,589,700	\$7,816,627
	@\$25,043	@\$22,789
18	\$8,580,800	\$7,808,528
	@\$25,017	@\$22,765
17	\$8,554,400	\$7,784,504
	@\$24,940	@\$22,695
16	\$8,536,800	\$7,768,488
	@\$24,889	@\$22,649
15	\$8,519,300	\$7,752,563
	@\$24,838	@\$22,602
12	\$8,501,700	\$7,736,547
	@\$24,786	@\$22,556
11	\$8,484,000	\$7,720,440
	@\$24,735	@\$22,509
10	\$8,462,100	\$7,700,511
	@\$24,671	@\$22,450
9	\$8,440,000	\$7,680,400
	@\$24,606	@\$22,392
8	\$8,427,000	\$7,668,570
	@\$24,569	@\$22,357
7	\$8,396,100	\$7,640,451
	@\$24,478	@\$22,275
6	\$8,374,200	\$7,620,522
	@\$24,415	@\$22,217
5	\$8,352,100	\$7,600,411
	@\$24,350	@\$22,159
3	\$8,330,800	\$7,581,028
	@\$24,288	@\$22,102

B		
訂價	即供價(9%)	
2房 419/420'		
30	\$9,418,500	\$8,570,835
	@\$22,479	@\$20,455
29	\$9,387,100	\$8,542,261
	@\$22,350	@\$20,339
27	\$9,279,400	\$8,444,254
	@\$22,094	@\$20,105
26	\$9,225,600	\$8,395,296
	@\$21,837	@\$19,872
25	\$9,171,700	\$8,346,247
	@\$21,580	@\$19,639
23	\$9,117,900	\$8,297,289
	@\$21,323	@\$19,405
22	\$9,064,000	\$8,248,240
	@\$21,066	@\$19,172
21	\$9,010,200	\$8,199,282
	@\$20,810	@\$18,939
20	\$8,956,300	\$8,150,233
	@\$20,553	@\$18,705
19	\$8,929,400	\$8,125,754
	@\$20,297	@\$18,472
18	\$8,926,700	\$8,123,297
	@\$20,254	@\$18,431
17	\$8,902,500	\$8,101,275
	@\$20,196	@\$18,389
16	\$8,889,000	\$8,088,990
	@\$20,164	@\$18,360
15	\$8,875,600	\$8,076,796
	@\$20,132	@\$18,330
12	\$8,862,100	\$8,064,511
	@\$20,100	@\$18,301
11	\$8,848,600	\$8,052,226
	@\$20,068	@\$18,272
10	\$8,832,500	\$8,037,575
	@\$20,030	@\$18,237
9	\$8,816,300	\$8,022,833
	@\$20,001	@\$18,208
8	\$8,810,900	\$8,017,919
	@\$20,000	@\$18,200
7	\$8,784,000	\$7,993,440
	@\$20,014	@\$18,212
6	\$8,767,900	\$7,978,789
	@\$20,076	@\$18,274
5	\$8,751,700	\$7,964,047
	@\$20,037	@\$18,235
3	\$8,715,400	\$7,931,014
	@\$20,014	@\$18,212



以上的物業資料只供參考，一切以發展商最新公布為準，如有任何資料錯漏本網頁不會承擔任何責任。