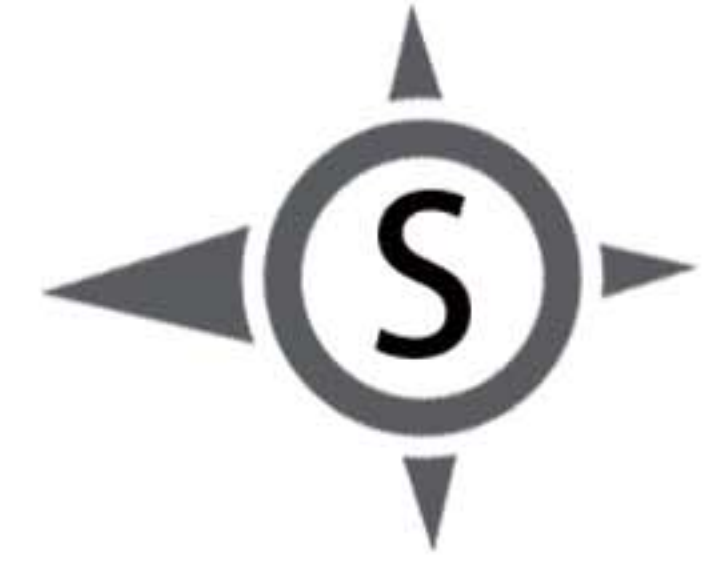


本木 Arbour

以上單位訂價圖由28HSE製作

製作日期：2020年11月19日

資料來源：新盤網頁(本木)



A5		
訂價	即供價 (-1%)	
2房連雙套房 350/511'		
20	\$9,426,000 @\$26,931	\$9,331,740 @\$26,662
18	\$9,162,000 @\$26,177	\$9,070,380 @\$25,915
15	\$8,547,000 @\$24,420	\$8,461,530 @\$24,176
11	\$11,992,000 @\$23,468	\$11,872,080 @\$23,233
10	\$11,865,000 @\$23,219	\$11,746,350 @\$22,987
9	\$11,780,000 @\$23,053	\$11,662,200 @\$22,822
8	\$11,695,000 @\$22,886	\$11,578,050 @\$22,658
7	\$11,611,000 @\$22,722	\$11,494,890 @\$22,495
6	\$11,483,000 @\$22,472	\$11,368,170 @\$22,247
5	\$11,356,000 @\$22,223	\$11,242,440 @\$22,001
3	\$11,229,000 @\$21,975	\$11,116,710 @\$21,755

A6		
訂價	即供價 (-1%)	
1房 350'		
12	\$8,493,000 @\$24,266	\$8,408,070 @\$24,023
10	\$8,376,000 @\$23,931	\$8,292,240 @\$23,692
8	\$8,259,000 @\$23,597	\$8,176,410 @\$23,361
6	\$8,083,000 @\$23,094	\$8,002,170 @\$22,863
5	\$7,995,000 @\$22,843	\$7,915,050 @\$22,614
3	\$7,908,000 @\$22,594	\$7,828,920 @\$22,368

B6		
訂價	即供價 (-1%)	
1房 335'		
12	\$8,088,000 @\$24,143	\$8,007,120 @\$23,902
10	\$7,975,000 @\$23,806	\$7,895,250 @\$23,568
8	\$7,862,000 @\$23,469	\$7,783,380 @\$23,234
6	\$7,721,000 @\$23,048	\$7,643,790 @\$22,817
5	\$7,636,000 @\$22,794	\$7,559,640 @\$22,566
3	\$7,551,000 @\$22,540	\$7,475,490 @\$22,315

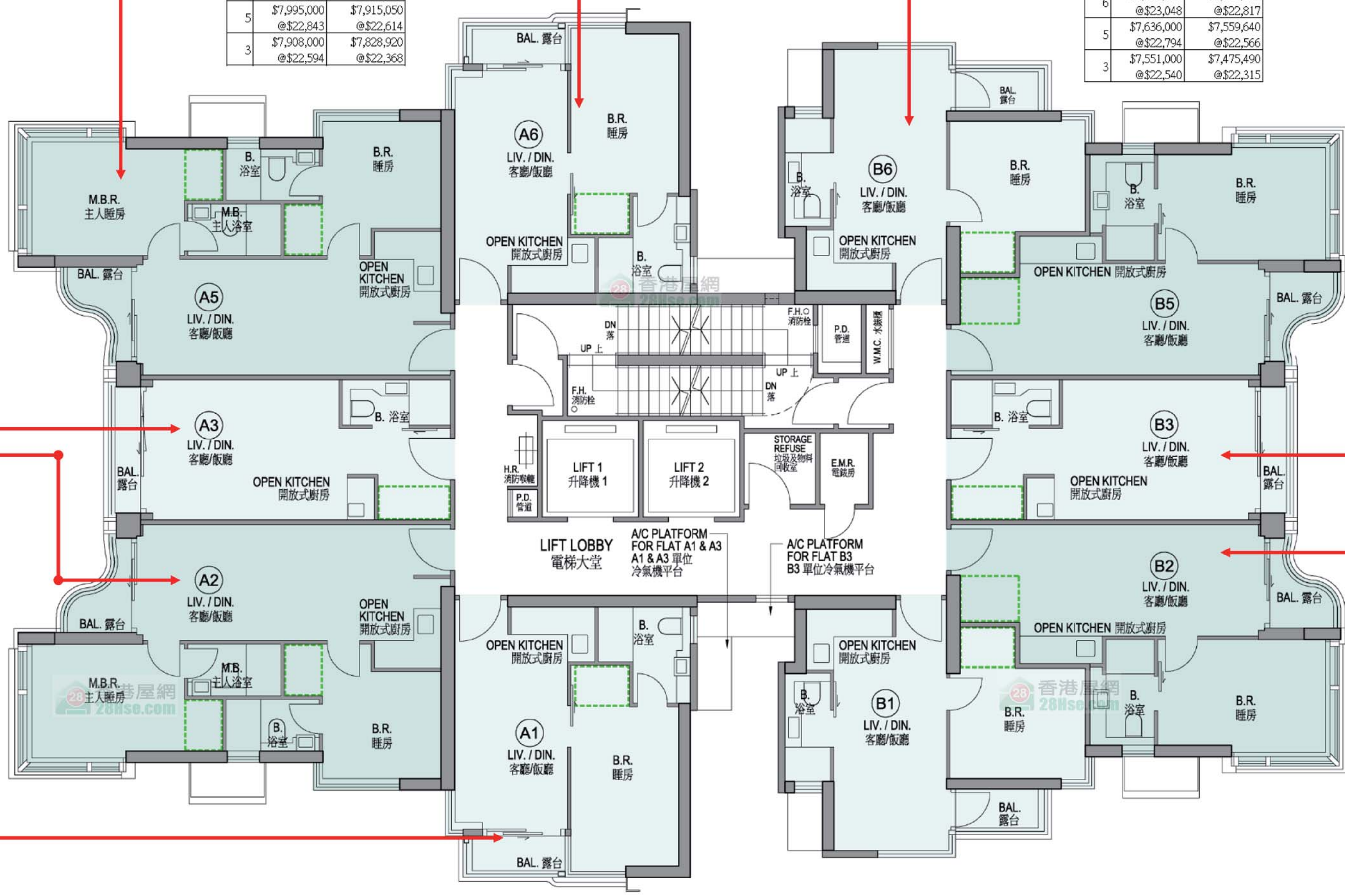
A3		
訂價	即供價 (-1%)	
開放式 511'		
21	\$13,350,000 @\$26,125	\$13,216,500 @\$25,864
19	\$13,095,000 @\$25,626	\$12,964,050 @\$25,370
18	\$12,841,000 @\$25,129	\$12,712,590 @\$24,878
15	\$12,162,000 @\$23,800	\$12,040,380 @\$23,562

A2		
訂價	即供價 (-1%)	
2房連雙套房 752'		
21	\$21,615,000 @\$28,743	\$21,398,850 @\$28,456
15	\$19,691,000 @\$26,185	\$19,494,090 @\$25,923

A1		
訂價	即供價 (-1%)	
1房 350'		
11	\$8,738,000 @\$24,966	\$8,650,620 @\$24,716
10	\$8,677,000 @\$24,791	\$8,590,230 @\$24,544
9	\$8,617,000 @\$24,620	\$8,530,830 @\$24,374
8	\$8,556,000 @\$24,446	\$8,470,440 @\$24,201
7	\$8,495,000 @\$24,271	\$8,410,050 @\$24,029
6	\$8,435,000 @\$24,100	\$8,350,650 @\$23,859
5	\$8,374,000 @\$23,926	\$8,290,260 @\$23,686
3	\$8,314,000 @\$23,754	\$8,230,860 @\$23,517

B3		
訂價	即供價 (-1%)	
開放式 256'		
10	\$6,161,000 @\$24,066	\$6,099,390 @\$23,826
9	\$6,117,000 @\$23,895	\$6,055,830 @\$23,656
7	\$6,028,000 @\$23,547	\$5,967,720 @\$23,311
6	\$5,939,000 @\$23,199	\$5,879,610 @\$22,967
5	\$5,872,000 @\$22,938	\$5,813,280 @\$22,708
3	\$5,806,000 @\$22,680	\$5,747,940 @\$22,453

B2		
訂價	即供價 (-1%)	
2房連雙套房 721/378'		
20	\$19,812,000 @\$27,479	\$19,613,880 @\$27,204
15	\$18,221,000 @\$25,272	\$18,038,790 @\$25,019
12	\$9,010,000 @\$23,836	\$8,919,900 @\$23,598
10	\$8,884,000 @\$23,503	\$8,795,160 @\$23,268
8	\$8,759,000 @\$23,172	\$8,671,410 @\$22,940
6	\$8,571,000 @\$22,675	\$8,485,290 @\$22,448
3	\$8,383,000 @\$22,177	\$8,299,170 @\$21,955



以上的物業資料只供參考，一切以發展商最新公布為準，如有任何資料錯漏本網頁不會承擔任何責任。