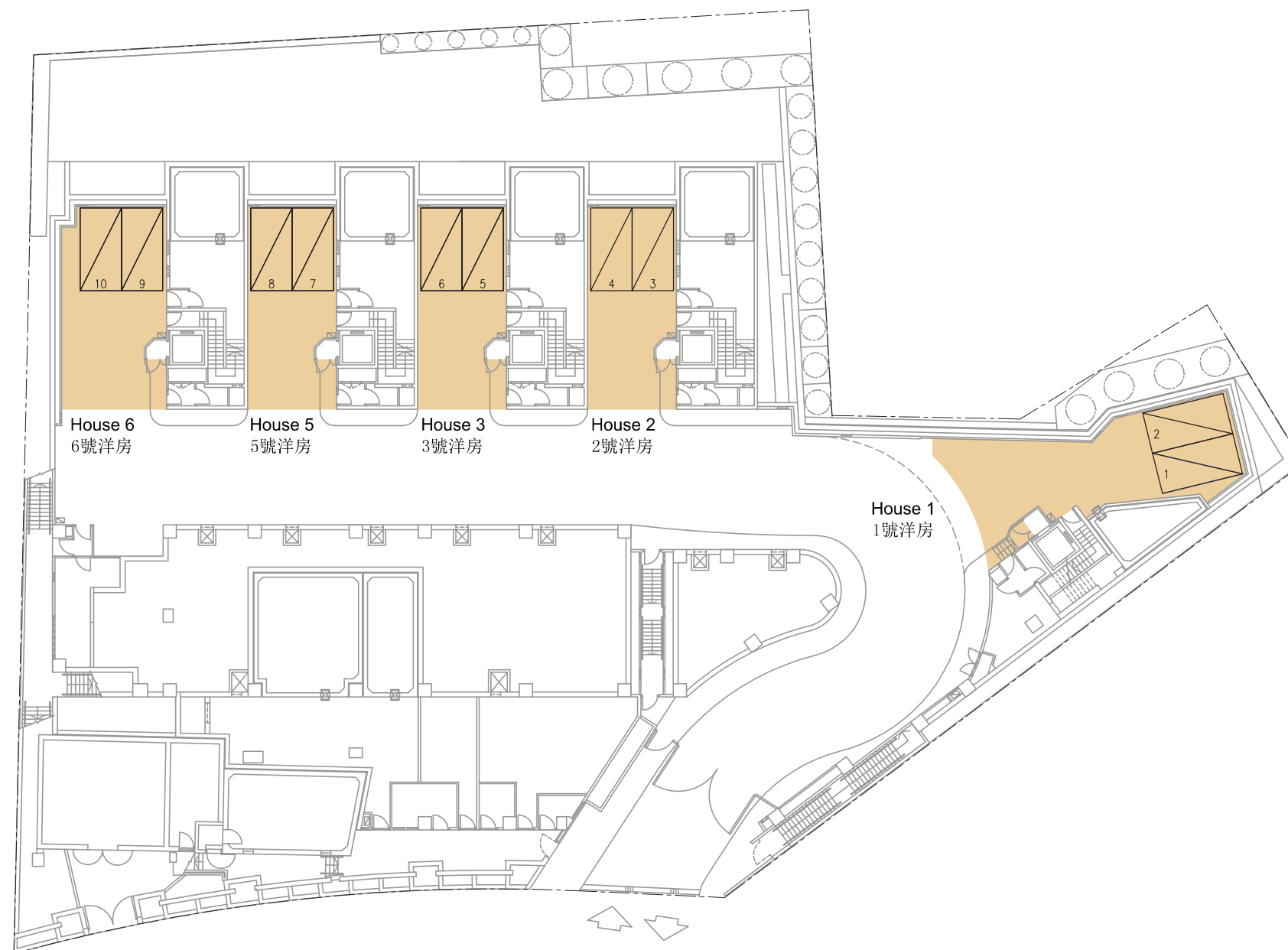


13 | FLOOR PLANS OF PARKING SPACES IN THE DEVELOPMENT

發展項目中的停車位的樓面平面圖

FLOOR PLAN OF PARKING SPACES

停車位的樓面平面圖



-  Carport
車庫
-  Residential Parking Space
住宅停車位

LOWER GROUND FLOOR PLAN
地下低層平面圖

0 2 10M米
Scale 比例

13 | FLOOR PLANS OF PARKING SPACES IN THE DEVELOPMENT 發展項目中的停車位的樓面平面圖

LATEST FLOOR PLAN OF PARKING SPACES

現狀停車位的樓面平面圖



House 1, 2, 3, 5 & 6 and the carpark area have been altered by way of exempted works and minor works under the Buildings Ordinance after completion of the Development. The approximate locations of the alterations that can be indicated on the latest carpark plans are indicated thereon and the details of such alterations are set out below (the below numberings refer to the marked alterations on the plan):

- a. Relocation of hose reel.
- b. Erection of new non-structural partition.
- c. Demolition of lift lobby.
- d. Relocation of hose reel and erection of new hose reel cabinet.
- e. Alteration of handrail design, addition of new metal door and threshold.
- f. Erection of new non-structural partition.
- g. Demolition of lift lobby.
- h. Relocation of hose reel and erection of new hose reel cabinet.
- i. Alteration of handrail design, addition of new metal door and threshold.
- j. Erection of new non-structural partition.
- k. Demolition of lift lobby.
- m. Relocation of hose reel and erection of new hose reel cabinet.
- n. Alteration of handrail design, addition of new metal door and threshold.
- o. Erection of new non-structural partition.
- p. Demolition of lift lobby.
- q. Relocation of hose reel and erection of new hose reel cabinet.
- r. Alteration of handrail design, addition of new metal door and threshold.
- s. Erection of new non-structural partition wall.
- t. Addition of new road curb.
- u. Alteration of lift lobby design.
- v. Relocation of hose reel.
- w. Alteration of handrail design, addition of new metal door and threshold.
- x. Alteration of door leaf swing angle.
- y. Erection of new glass door and new non-structural partition.
- z. Addition of new roller shutter.

1、2、3、5 及 6 號洋房及停車場範圍在發展項目落成後進行獲《建築物條例》豁免及小型工程。該等改動的位置如能在現狀停車位平面圖中顯示就於其上標出。該等改動的詳情列出如下(下文編號對應圖中改動編號)：

- a. 更改消防喉轆位置。
- b. 豎立新非結構側板。
- c. 拆除電梯大堂。
- d. 更改消防喉轆位置及豎立新消防喉轆櫃。
- e. 更改扶手設計、加建新金屬門及門檻。
- f. 豎立新非結構側板。
- g. 拆除電梯大堂。
- h. 更改消防喉轆位置及豎立新消防喉轆櫃。
- i. 更改扶手設計、加建新金屬門及門檻。
- j. 豎立新非結構側板。
- k. 拆除電梯大堂。
- m. 更改消防喉轆位置及豎立新消防喉轆櫃。
- n. 更改扶手設計、加建新金屬門及門檻。
- o. 豎立新非結構側板。
- p. 拆除電梯大堂。
- q. 更改消防喉轆位置及豎立新消防喉轆櫃。
- r. 更改扶手設計、加建新金屬門及門檻。
- s. 豎立新非結構分隔牆。
- t. 加建新路緣石。
- u. 更改電梯大堂設計。
- v. 更改消防喉轆位置。
- w. 更改扶手設計、加建新金屬門及門檻。
- x. 更改門頁可擺動角度。
- y. 豎立新玻璃門及非結構分隔牆。
- z. 加建新捲閘。