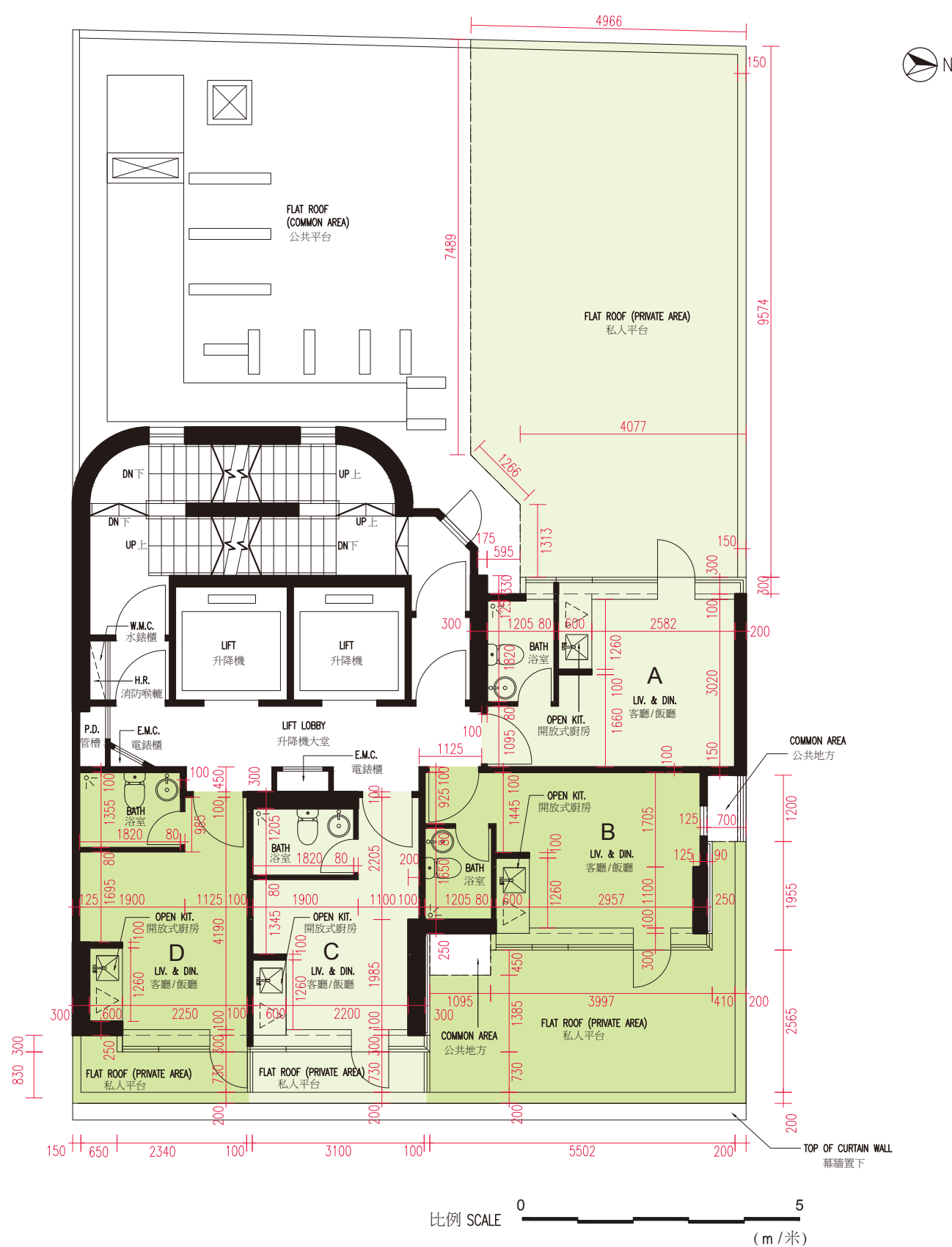


# 11 FLOOR PLANS OF RESIDENTIAL PROPERTIES IN THE DEVELOPMENT

## 發展項目的住宅物業的平面圖

### 3/F Floor Plan

### 3 樓平面圖



1. Floor-to-floor height of each residential property on 3/F of the Development as provided in the approved building plans is 3.15m.
2. The thickness of the floor slabs (excluding plaster) of each residential property on 3/F of the Development as provided in the approved building plans is 180mm.
3. The internal areas of the residential properties on the upper floors will generally be slightly larger than those on the lower floors because of the reducing thickness of the structural walls on the upper floors.

#### Note:

- (a) The dimensions of floor plans are all structural dimensions in millimetres.
- (b) Please refer to page 19 of this sales brochure for remarks, legend of the terms and abbreviations shown in this floor plan.

1. 按發展項目的經批准的圖則所規定者，發展項目 3 樓每個住宅物業的層與層之間的高度為 3.15 米。
2. 按發展項目的經批准的圖則所規定者，發展項目 3 樓每個住宅單位的樓板（不包括灰泥）的厚度為 180 毫米。
3. 因住宅物業的較高樓層的結構牆的厚度遞減，較高層的內部面積，一般比較低層的內部面積稍大。

#### 備註：

- (a) 樓面平面圖尺寸所列的數字為以毫米標示的建築結構尺寸。
- (b) 有關樓面平面圖中顯示的附註，名詞及簡稱請參閱本售樓說明書第 19 頁。