

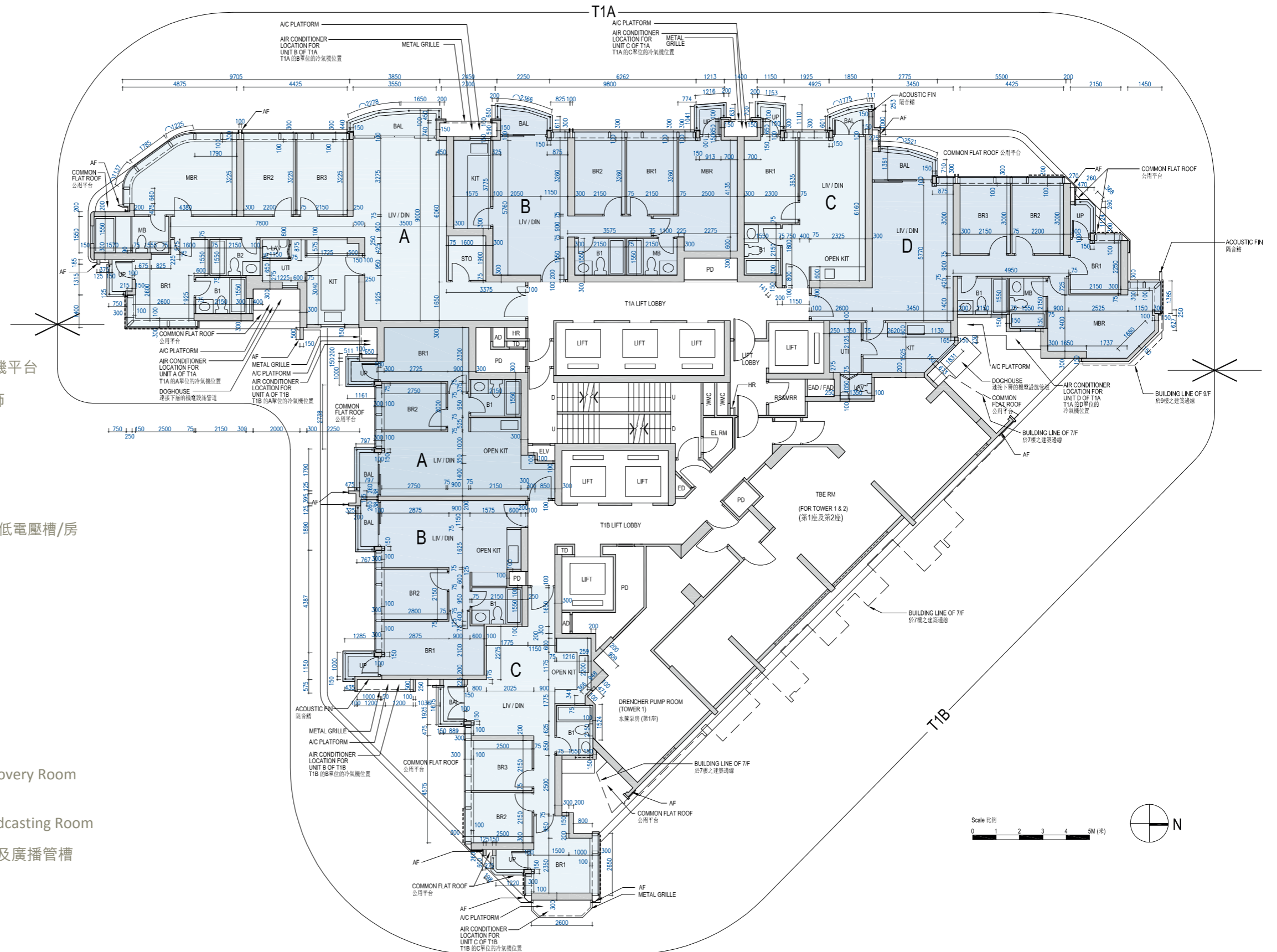
Floor plans of residential properties in the phase of the development

發展項目期數的住宅物業的樓面平面圖

T1A & T1B of Tower 1 3/F
第1座之T1A及T1B 3樓

Legend 圖例

- A/C PLATFORM = Air-conditioner Platform 冷氣機平台
- AD = Air Duct 通風槽
- AF = Architectural Feature 建築裝飾
- B = Bathroom 浴室
- BAL = Balcony 露台
- BR = Bedroom 睡房
- D = Down 下
- DIN = Dining Room 飯廳
- EAD = Exhaust Air Duct 排氣管槽
- ED = Electrical Duct 電線槽
- ELV = Extra Low Voltage Duct/Room 低電壓槽/房
- EL RM = Electrical Room 電掣房
- FAD = Fresh Air Duct 鮮風管槽
- HR = Hose Reel 消防喉轆
- KIT = Kitchen 廚房
- LAV = Lavatory 洗手間
- LIFT = 升降機
- LIFT LOBBY = 升降機大堂
- LIV = Living Room 客廳
- MB = Master Bathroom 主人浴室
- MBR = Master Bedroom 主人睡房
- METAL GRILLE = 金屬柵
- OPEN KIT = Open Kitchen 開放式廚房
- PD = Pipe Duct 管道槽
- PD RM = Pipe Duct Room 管道房
- RS & MRR = Refuse Storage & Material Recovery Room 垃圾及物料回收室
- STO = Store 儲物房
- TBE RM = Telecommunications and Broadcasting Room 電訊及廣播設備機房
- TD = Telecommunication Duct 電訊及廣播管槽
- U = Up 上
- UP = Utility Platform 工作平台
- UTI = Utility Room 工作間
- WMC = Water Meter Cabinet 水錶箱
- = Fixed Window 固定窗戶



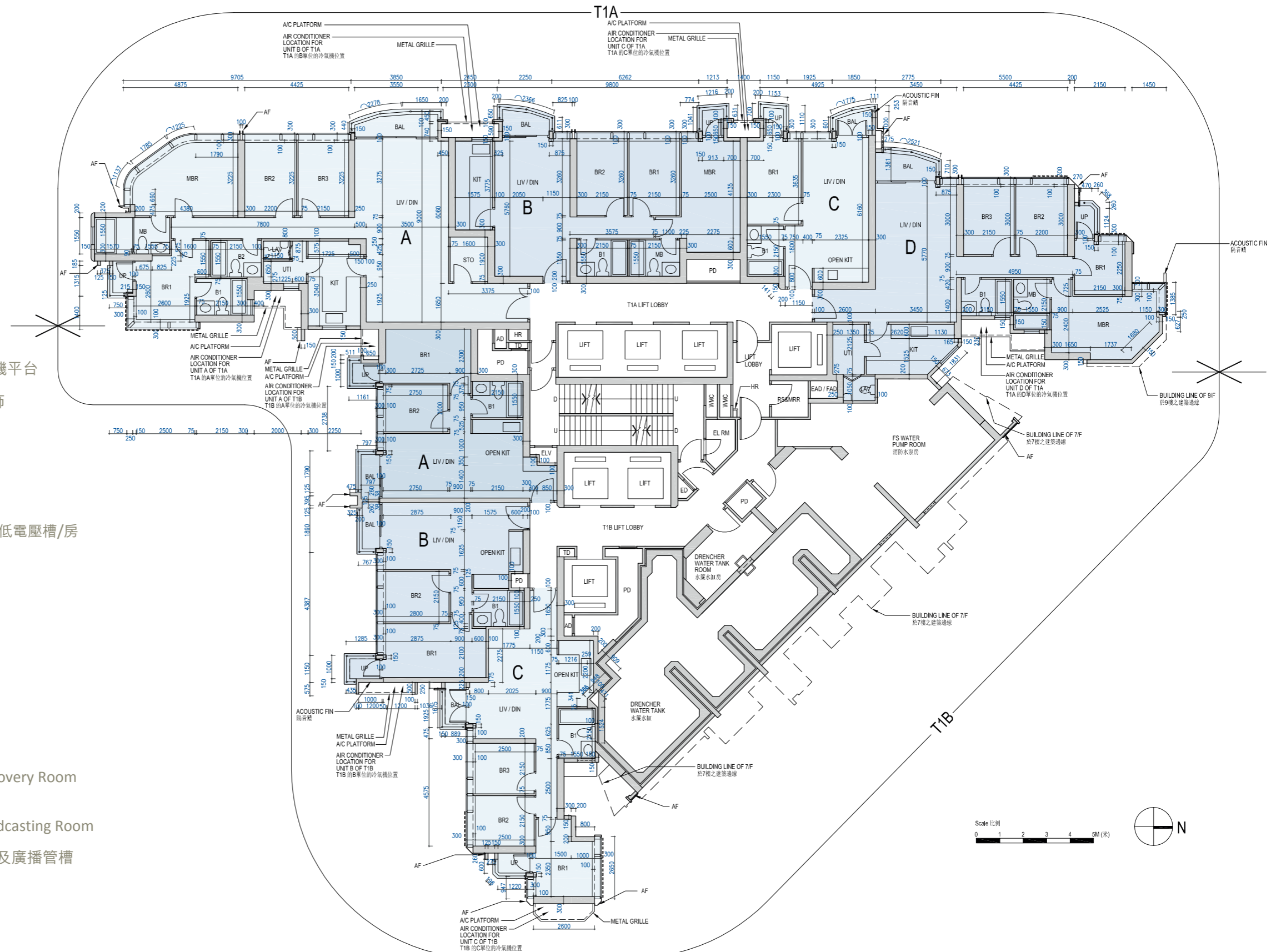
Floor plans of residential properties in the phase of the development

發展項目期數的住宅物業的樓面平面圖

T1A & T1B of Tower 1 5/F
第1座之T1A及T1B 5樓

Legend 圖例

- A/C PLATFORM = Air-conditioner Platform 冷氣機平台
- AD = Air Duct 通風槽
- AF = Architectural Feature 建築裝飾
- B = Bathroom 浴室
- BAL = Balcony 露台
- BR = Bedroom 睡房
- D = Down 下
- DIN = Dining Room 飯廳
- EAD = Exhaust Air Duct 排氣管槽
- ED = Electrical Duct 電線槽
- ELV = Extra Low Voltage Duct/Room 低電壓槽/房
- EL RM = Electrical Room 電掣房
- FAD = Fresh Air Duct 鮮風管槽
- HR = Hose Reel 消防喉轆
- KIT = Kitchen 廚房
- LAV = Lavatory 洗手間
- LIFT = 升降機
- LIFT LOBBY = 升降機大堂
- LIV = Living Room 客廳
- MB = Master Bathroom 主人浴室
- MBR = Master Bedroom 主人睡房
- METAL GRILLE = 金屬格柵
- OPEN KIT = Open Kitchen 開放式廚房
- PD = Pipe Duct 管道槽
- PD RM = Pipe Duct Room 管道房
- RS & MRR = Refuse Storage & Material Recovery Room 垃圾及物料回收室
- STO = Store 儲物房
- TBE RM = Telecommunications and Broadcasting Room 電訊及廣播設備機房
- TD = Telecommunication Duct 電訊及廣播管槽
- U = Up 上
- UP = Utility Platform 工作平台
- UTI = Utility Room 工作間
- WMC = Water Meter Cabinet 水錶箱
- = Fixed Window 固定窗戶



Floor plans of residential properties in the phase of the development

發展項目期數的住宅物業的樓面平面圖

T1A & T1B of Tower 1 6/F
第1座之T1A及T1B 6樓

Legend 圖例

- A/C PLATFORM = Air-conditioner Platform 冷氣機平台
- AD = Air Duct 通風槽
- AF = Architectural Feature 建築裝飾
- B = Bathroom 浴室
- BAL = Balcony 露台
- BR = Bedroom 睡房
- D = Down 下
- DIN = Dining Room 飯廳
- EAD = Exhaust Air Duct 排氣管槽
- ED = Electrical Duct 電線槽
- ELV = Extra Low Voltage Duct/Room 低電壓槽/房
- EL RM = Electrical Room 電掣房
- FAD = Fresh Air Duct 鮮風管槽
- HR = Hose Reel 消防喉轆
- KIT = Kitchen 廚房
- LAV = Lavatory 洗手間
- LIFT = 升降機
- LIFT LOBBY = 升降機大堂
- LIV = Living Room 客廳
- MB = Master Bathroom 主人浴室
- MBR = Master Bedroom 主人睡房
- METAL GRILLE = 金屬格柵
- OPEN KIT = Open Kitchen 開放式廚房
- PD = Pipe Duct 管道槽
- PD RM = Pipe Duct Room 管道房
- RS & MRR = Refuse Storage & Material Recovery Room 垃圾及物料回收室
- STO = Store 儲物房
- TBE RM = Telecommunications and Broadcasting Room 電訊及廣播設備機房
- TD = Telecommunication Duct 電訊及廣播管槽
- U = Up 上
- UP = Utility Platform 工作平台
- UTI = Utility Room 工作間
- WMC = Water Meter Cabinet 水錶箱
- = Fixed Window 固定窗戶

