

# FLOOR PLAN OF RESIDENTIAL PROPERTIES IN THE DEVELOPMENT

## 發展項目的住宅物業的樓面平面圖

### HOUSE UNIT 1B (TYPE 2) (also known as DIAMOND HOUSE UNIT 1B)

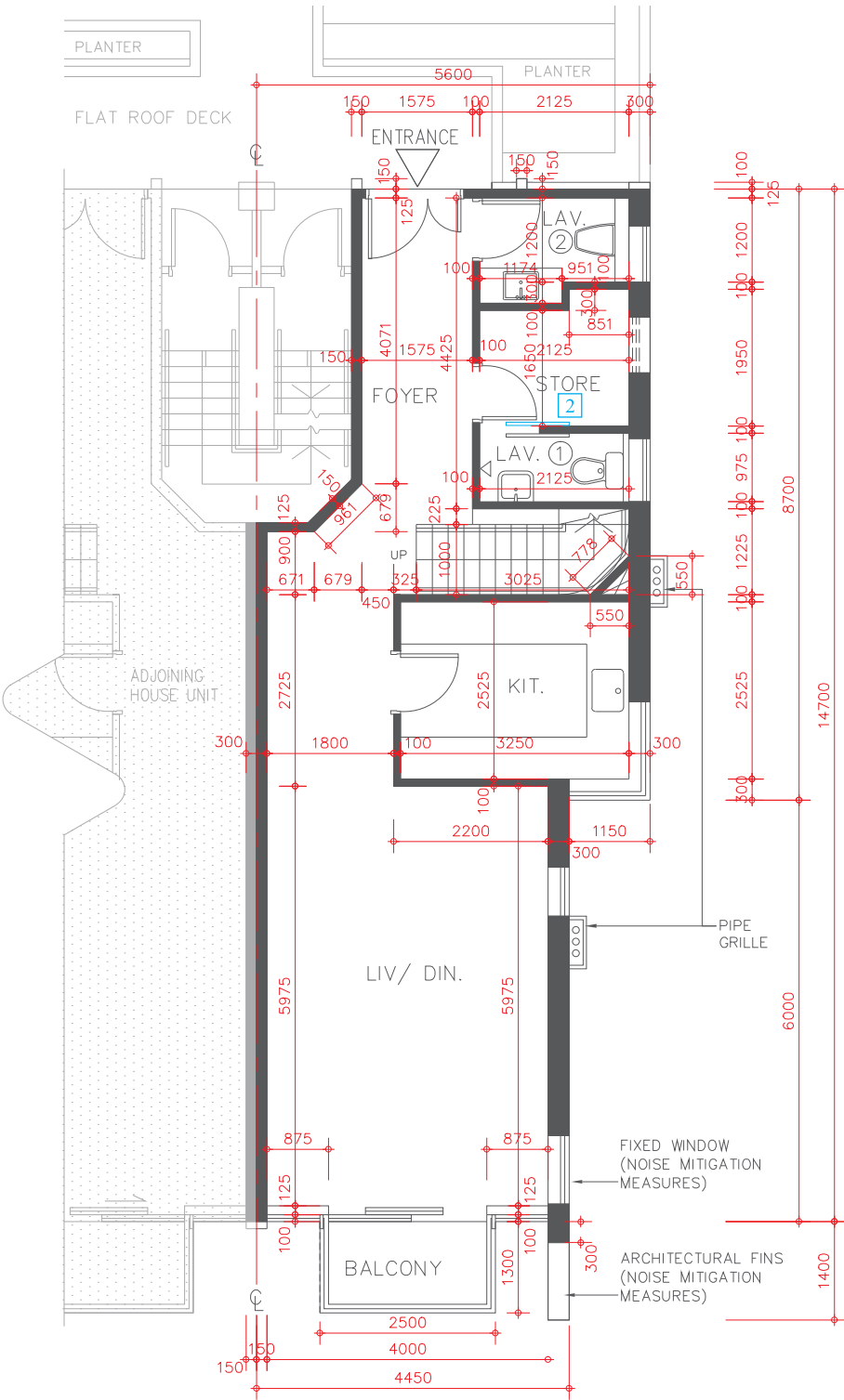
### 洋房單位 1B (類別 2) (亦稱為藍彩鑽洋房單位 1B)

Alterations have been made by way of minor works or exempted works under the Buildings Ordinance (Cap. 123). The alterations are set out below (with the numbering below corresponding to the remarks in the floor plans):

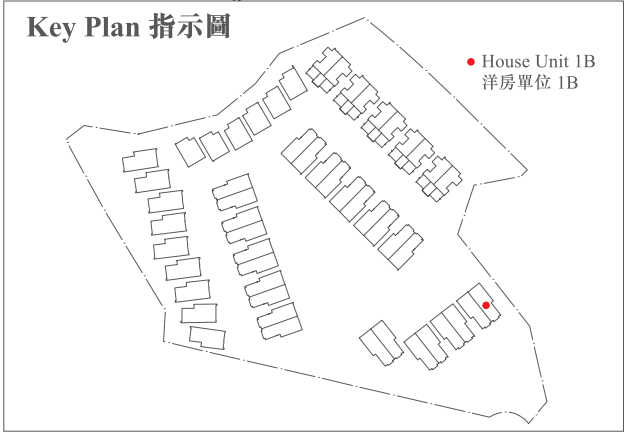
因進行小型工程或獲《建築物條例》(第123章)豁免的工程而有所改動。該等改動之位置於平面圖中標示及該等改動列出如下(下述編號對應樓面平面圖中的附註)：

- 2 The sliding door location is replaced by a different location.  
趟門位置以不同位置取代。

UPPER LEVEL 1 FLOOR PLAN  
高層 1 樓平面圖



Scale 比例尺 : 0 5 Metres (米)



# FLOOR PLAN OF RESIDENTIAL PROPERTIES IN THE DEVELOPMENT

## 發展項目的住宅物業的樓面平面圖

### HOUSE UNIT 1B (TYPE 2) (also known as DIAMOND HOUSE UNIT 1B)

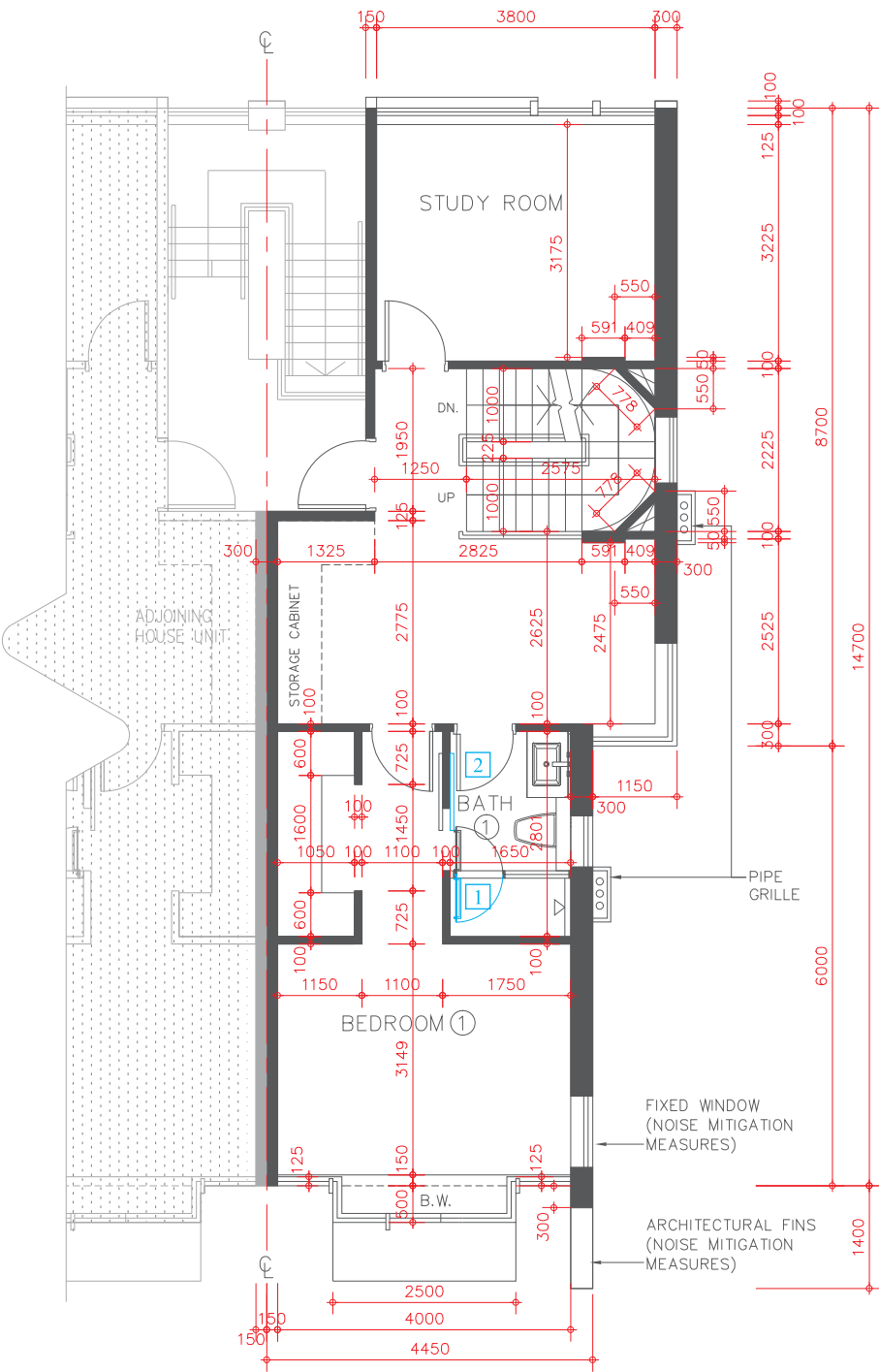
#### 洋房單位 1B (類別 2) (亦稱為藍彩鑽洋房單位 1B)

Alterations have been made by way of minor works or exempted works under the Buildings Ordinance (Cap. 123). The alterations are set out below (with the numbering below corresponding to the remarks in the floor plans):

因進行小型工程或獲《建築物條例》(第123章)豁免的工程而有所改動。該等改動之位置於平面圖中標示及該等改動列出如下(下述編號對應樓面平面圖中的附註)：

- 1 The hinge position and door swing direction are replaced by a different position and direction.  
門鉸鏈位置及開門方向以不同位置及方向取代。
- 2 The sliding door location is replaced by a different location.  
趟門位置以不同位置取代。

UPPER LEVEL 2 FLOOR PLAN  
高層 2 樓平面圖



Scale 比例尺：  
0 5 Metres (米)

# FLOOR PLAN OF RESIDENTIAL PROPERTIES IN THE DEVELOPMENT

## 發展項目的住宅物業的樓面平面圖

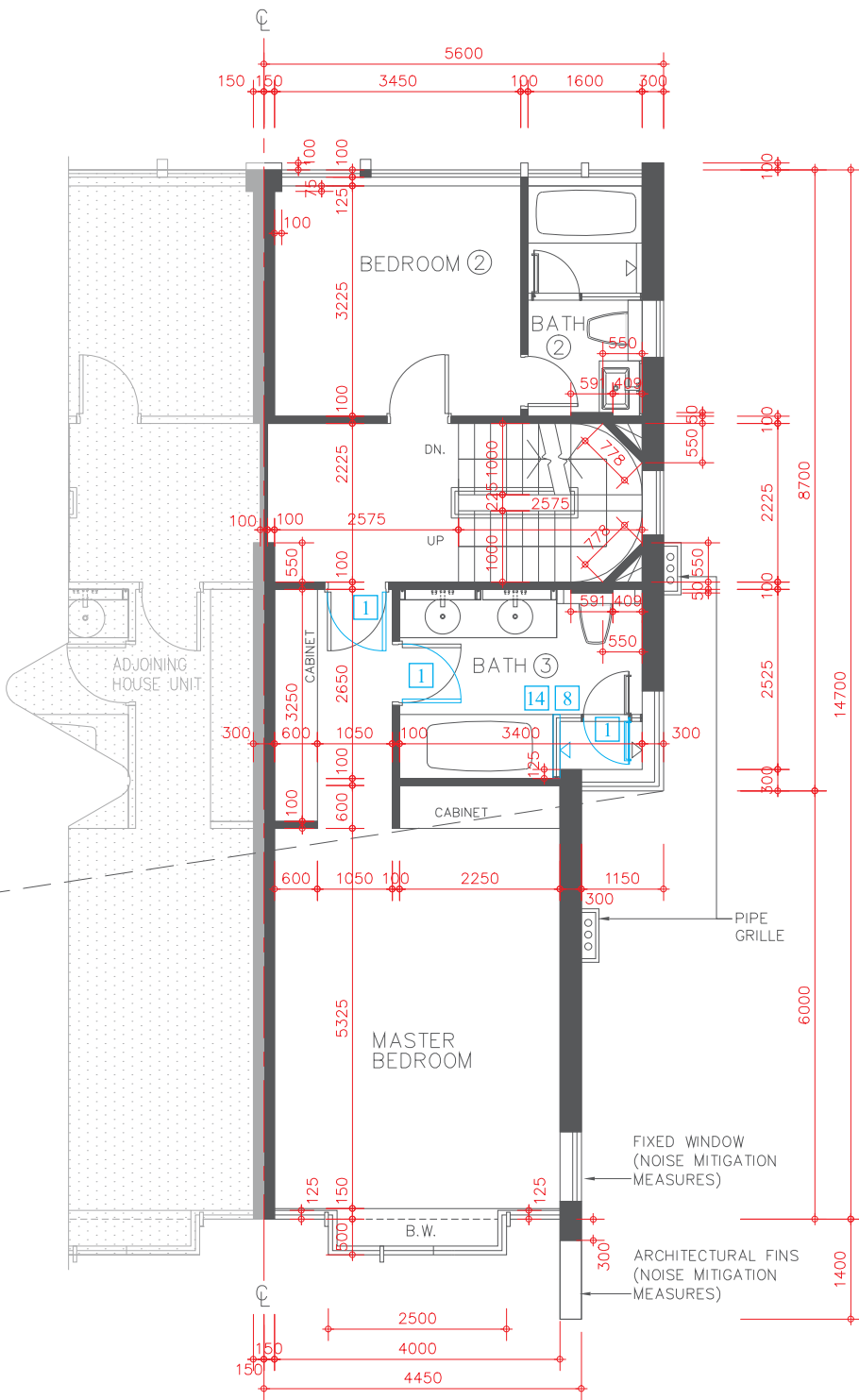
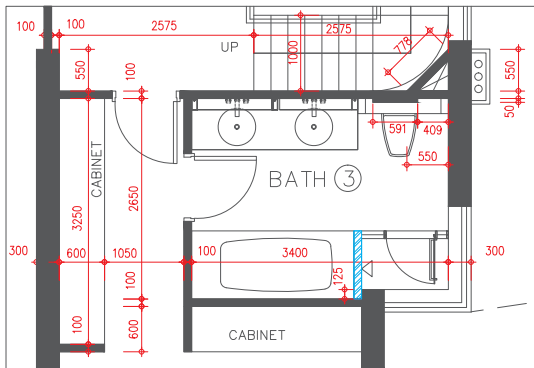
### HOUSE UNIT 1B (TYPE 2) (also known as DIAMOND HOUSE UNIT 1B)

#### 洋房單位 1B (類別 2) (亦稱為藍彩鑽洋房單位 1B)

Alterations have been made by way of minor works or exempted works under the Buildings Ordinance (Cap. 123). The alterations are set out below (with the numbering below corresponding to the remarks in the floor plans):

因進行小型工程或獲《建築物條例》(第123章)豁免的工程而有所改動。該等改動之位置於平面圖中標示及該等改動列出如下(下述編號對應樓面平面圖中的附註)：

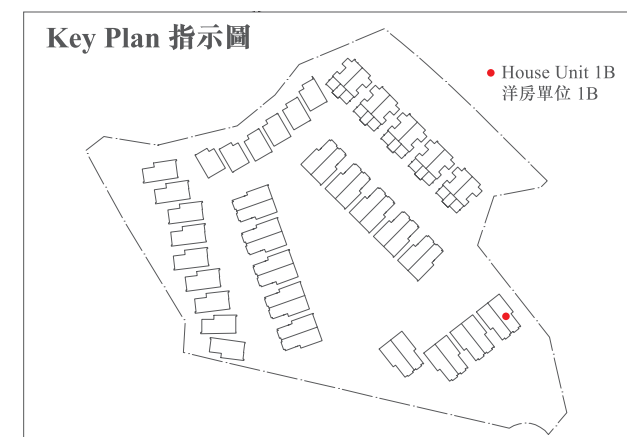
- 1 The hinge position and door swing direction are replaced by a different position and direction.  
門鉸鏈位置及開門方向以不同位置及方向取代。
- 8 Location of hand-shower and shower mixer are replaced with different locations.  
手握式花灑及花灑水龍頭以不同位置取代。
- 14 New internal wall.  
新建內牆。



Scale 比例尺 :  
0 5 Metres (米)

## 發展項目的住宅物業的樓面平面圖

**洋房單位1B (類別2) (亦稱為藍彩鑽洋房單位1B)**



\* The description of each such “Flat Roof” as shown on this Upper Roof Floor Plan corresponds to the description in the latest Approved Building Plans of the Development but each such Flat Roof is de facto Roof in actual use. In this connection, the said Flat Roof has been respectively counted as part of the “Roof” specified in Part 1 of Schedule 2 of the Residential Properties (First-hand Sales) Ordinance (Cap.621) (“the Ordinance”) of such house unit in compliance with section 8 and section 11(2)(b) in Part 1 of Schedule.

\* 在此高層天台平面圖上每一個這樣顯示為「平台」之描述，跟發展項目最新版本之批准的建築圖則上所描述的一致，惟每一個這樣的平台實質上的真正用途為天台。因此，該平台已根據《一手住宅物業銷售條例》(第621章)(「該條例」)的附表2第1部份，已被計入為該洋房單位所指定的「天台」，已遵從該條例的第8條及附表1第1部份第11(2)(b)條。

Description 描述	Floor 樓層				
	Upper Level 1 高層 1 樓	Upper Level 2 高層 2 樓	Upper Level 3 高層 3 樓	Roof 天台	Upper Roof 高層天台
Floor-to-floor height of residential property 住宅物業的層與層之間的高度	3.50m(米)	3.00m(米)	3.50m(米)	2.80m(米)	Not Applicable 不適用
The thickness of floor slabs (excluding plaster) of residential property 住宅物業的樓板(不包括灰泥)的厚度	150mm(毫米)	150mm(毫米)	150mm(毫米)	150mm(毫米)	Not Applicable 不適用

The internal areas of the residential properties on the upper floors will generally be slightly larger than those on the lower floors because of the reducing thickness of the structural walls on the upper floors. 因住宅物業的較高樓層的結構牆的厚度遞減，較高樓層的內部面積，一般比較低樓層的內部面積稍大。

Please refer to page 18-19 of this sales brochure for the legends for the floor plans of residential properties.  
請參閱本售樓說明書第18-19頁為住宅物業樓面平面圖而設的圖例。

Remark: The dimensions of floor plans are all structural dimensions in millimetre.  
備註：平面圖所列之數字為以毫米標示之建築結構尺寸。